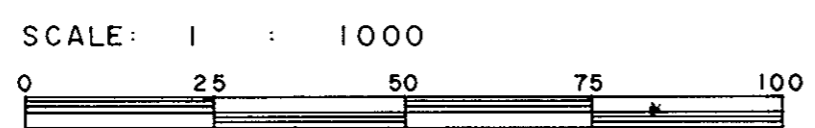


PLAN No 29387
 Deposited in the Land Title
 Office at Prince George, B.C. this
18 day of JULY, 1983.

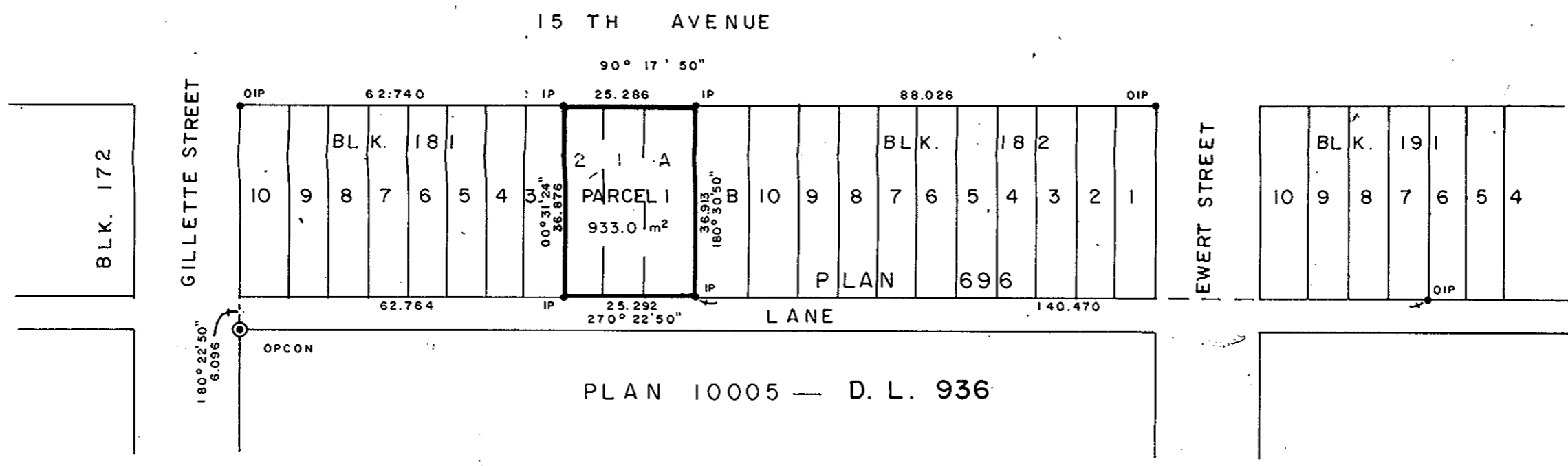
E.J. RAVEN
 Registrar

REFERENCE PLAN OF CONSOLIDATION OF
 LOTS 1, 2 & A, BLOCK 181, PLAN 696
 DISTRICT LOT 936
 CARIBOO DISTRICT— BRITISH COLUMBIA



NOTE: Bearings are astronomic, derived from the
 south boundary of 15th Avenue, as shown on Plan
 21131.

LEGEND: ● OPCON denotes an old concrete monument found.
 ● OIP denotes an old iron pin found.
 ● IP denotes an iron pin set.



I, DONALD A. DUFFY, a British Columbia Land
 Surveyor, of Prince George, in British Columbia,
 certify that I was present at and did personally
 superintend the survey represented by this plan,
 and that the survey and plan are correct. The
 survey was completed on the 20 day of JUNE,
 1983.

Owner *on to legal*
 Witness *[Signature]*

This plan lies within the Fraser-Fort George
 Regional District.

W.D. USHER & ASSOCIATES
 LAND SURVEYORS
 PRINCE GEORGE — B.C.
 0V 59 13890