

EXPLANATORY PLAN OF PARTS OF  
THE GROUND FLOOR OF A BUILDING LOCATED ON  
LOTS 6 & 7, BLOCK 129, PLAN 1268  
DISTRICT LOT 343  
CARIBOO DISTRICT - BRITISH COLUMBIA

SCALE: 1 : 200



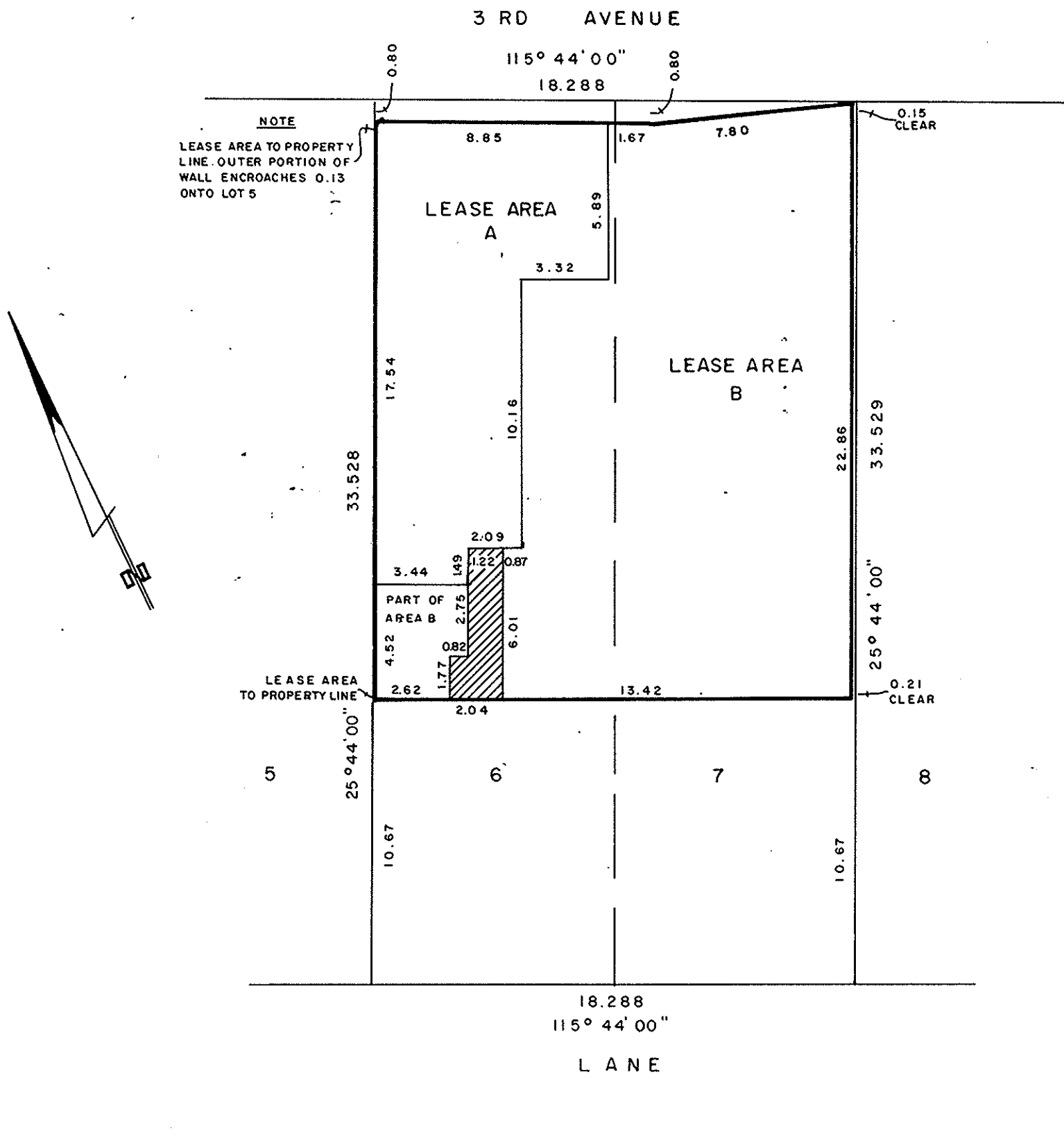
NOTE: Property dimensions are derived from Plan 1268.

Portion of Lease Area B required for entrance  
and egress to and from Lease Area A is shown  
hatched.

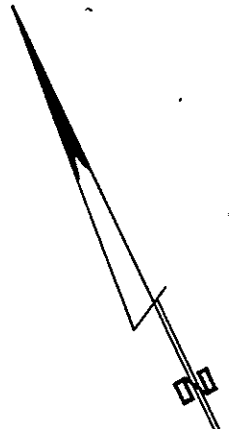
PLAN No 29353

Deposited in the Land Title  
Office at Prince George, B.C. this  
4th day of July, 1983.

F. J. IR.  
Registrar



NOTE  
LEASE AREA TO PROPERTY  
LINE. OUTER PORTION OF  
WALL ENCROACHES 0.13  
ONTO LOT 5



BLOCK 129  
PLAN 1268

CERTIFIED CORRECT  
This 24 day of June, 1983.

D. A. DUFFY  
D. A. DUFFY, B.C.L.S.

This plan lies within the Fraser-Fort George  
Regional District.

W.D. USHER & ASSOCIATES  
LAND SURVEYORS  
PRINCE GEORGE - B.C.