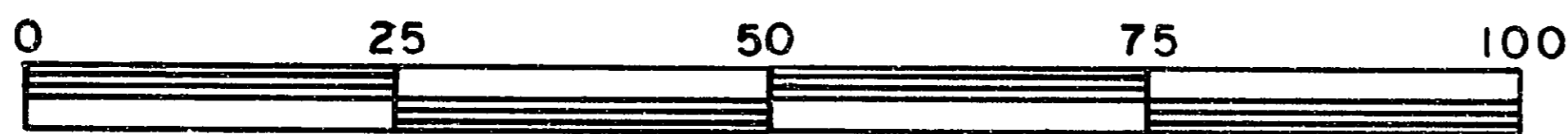


26-FF-226

PLAN OF EASEMENT THROUGH  
 LOT 4, PLAN 21134  
 DISTRICT LOT 2425  
 CARIBOO DISTRICT — BRITISH COLUMBIA

SCALE: 1 : 1000



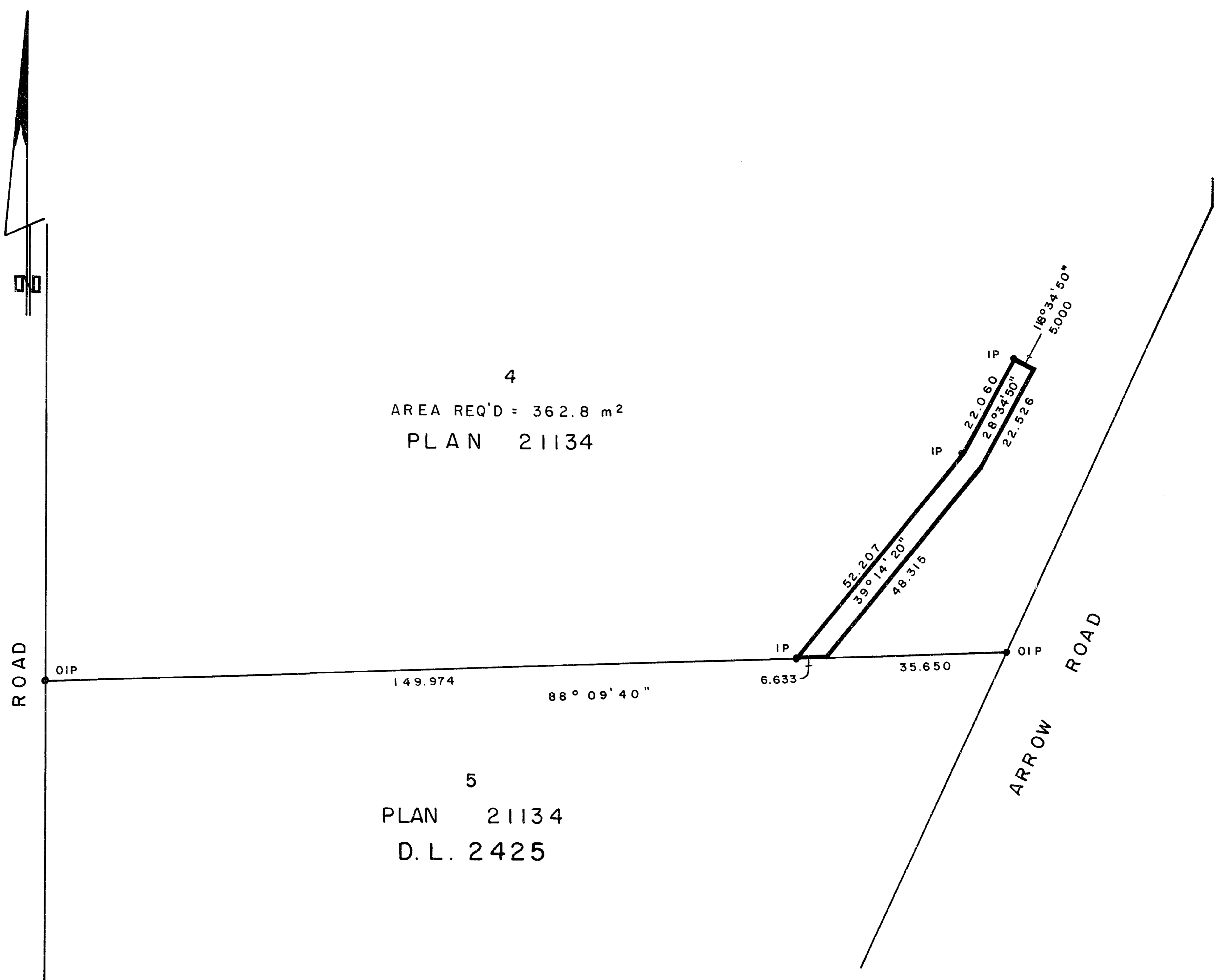
NOTE: Bearings are astronomic, derived from the south boundary of Lot 4, Plan 21134.

LEGEND: • OIP denotes an old iron pin found.  
 • IP denotes an iron pin set.

PLAN No 29351

Deposited in the Land Title Office at Prince George, B.C. this 30th day of June, 1983.

Registrar *E. J. Raven*



I, DONALD A. DUFFY, a British Columbia Land Surveyor, of Prince George, in British Columbia, certify that I was present at and did personally superintend the survey represented by this plan, and that the survey and plan are correct. The survey was completed on the 18 day of OCT., 1982.

This plan lies within the Fraser- Fort George Regional District.

W. D. USHER & ASSOCIATES  
 LAND SURVEYORS  
 PRINCE GEORGE — B.C.  
 LO 72 13531