

REFERENCE PLAN FOR ROAD DEDICATION  
OF PART OF S.E. 1/4 DISTRICT LOT 1599,  
CARIBOO DISTRICT.

Scale: 1:1000 (DISTANCES ARE IN METRES AND DECIMALS THEREOF)

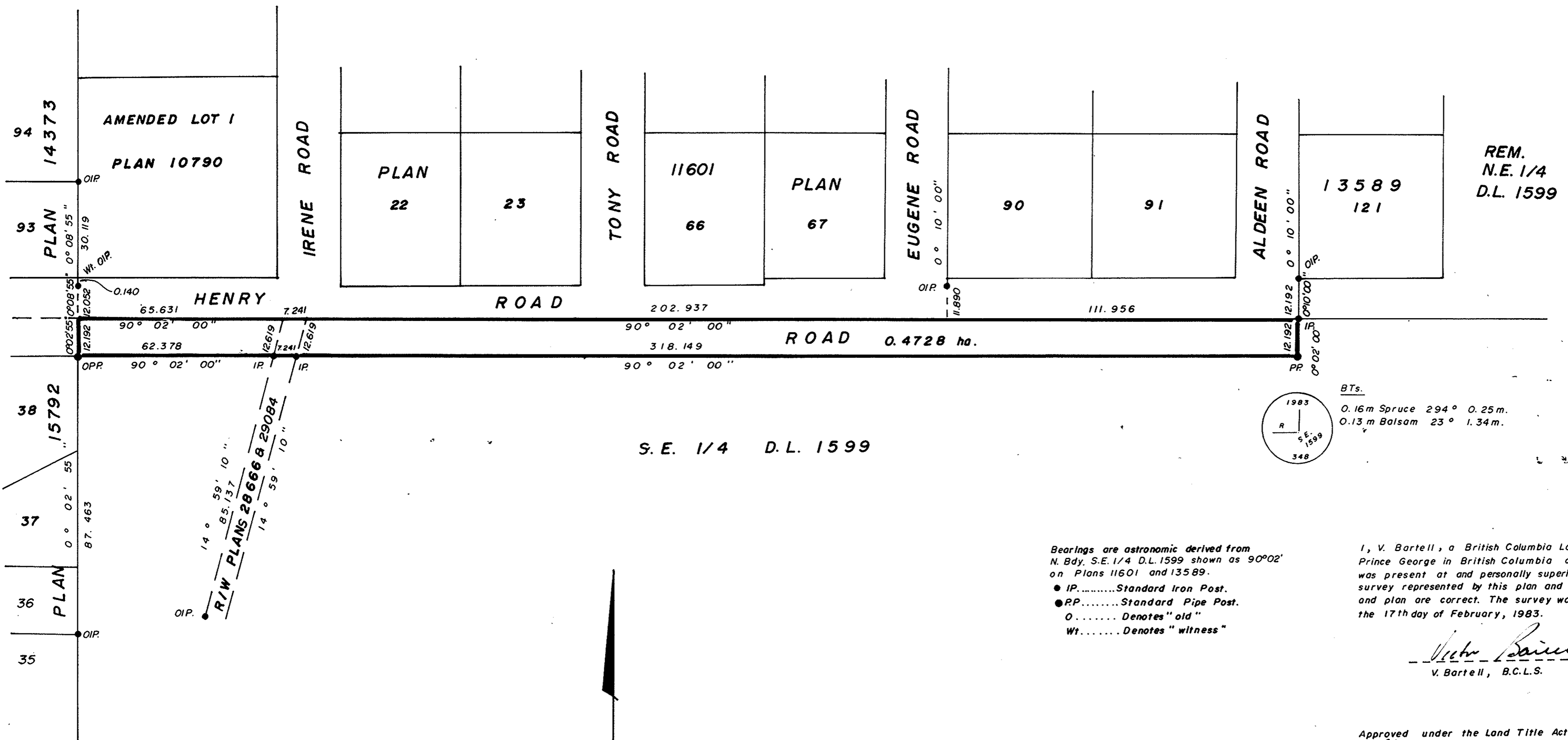


PLAN NO. 29306

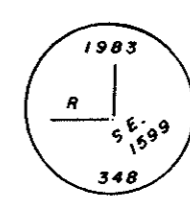
DEPOSITED IN THE LAND TITLE OFFICE AT  
PRINCE GEORGE THIS 14 DAY OF JUN 1983.

--- *eJR* ---  
REGISTRAR

PLOTTED FD  
GD



S. E. 1/4 D. L. 1599



BTs.  
0.16m Spruce 294° 0.25m.  
0.13m Balsam 23° 1.34m.

Bearings are astronomic derived from  
N. Bdy. S.E. 1/4 D.L. 1599 shown as 90°02'  
on Plans 11601 and 13589.  
● IP.....Standard Iron Post.  
● RP.....Standard Pipe Post.  
O..... Denotes "old"  
Wt..... Denotes "witness"

I, V. Bartell, a British Columbia Land Surveyor of  
Prince George in British Columbia certify that I  
was present at and personally superintended the  
survey represented by this plan and that the survey  
and plan are correct. The survey was completed on  
the 17th day of February, 1983.

*V. Bartell*  
V. Bartell, B.C.L.S.

Approved under the Land Title Act  
this 22 day of FEB 1983.

Roman Catholic Episcopal Corporation of  
Prince Rupert.

*F. O'Grady*

Authorized Signatories

AS TO ROAD DEDICATION:  
CITY OF PRINCE GEORGE:  
*A.D. Buchanan* acting Mayor.  
A.D. Buchanan  
AUTHORIZED SIGNATORIES.

*C.E. Olot*  
Approving Officer  
City of Prince George.

This plan lies within the Fraser Fort George  
Regional District.

McWilliam, Whyte, Goble & Associates.  
B.C. Land Surveyors,  
Prince George - Kamloops - Smithers - Salmon Arm.

REF. NO. 83011

D. L. 1599

City of Prince George 29306