

PLOTTED

PLAN OF SUBDIVISION OF PART OF REM. N.W. 1/4 D.L. 1598, CARIBOO DISTRICT.

SCALE: 1: 1250 (DISTANCES ARE IN METRES)

PLAN 29304 Deposited in the Land Title Office at Prince George, B.C. on the 14 day of June 1983.

Registrar

W.D. USHER & ASSOCIATES (B.C.) LTD.

NORTHLAND BANK

Panorest Investments Inc.

Authorized Signatories

Bearings are astronomic and are derived from North Bdy. of Purdue Road East shown as 89°58'00" on Plan 16488.

- Legend for symbols: P.con. Standard Concrete Post, P.Rock Standard Rock Post, PP Standard Pipe Post, I.P. Standard Iron Post, P. Wooden Post, L.P. Lead Plug, O Denoting "Old", WT Denoting "Witness", CIP Capped Iron Post, TH Traverse Hub.

I, D. Keown, a British Columbia land surveyor, of Prince George, in British Columbia, certify that I was present at and personally superintended the survey represented by this plan, and that the survey and plan are correct. The survey was completed on the 30 day of July 1982.

D. Keown, B.C.L.S.

Approved under the Land Title Act on the 28 day of JAN 1983.

Approving Officer

City Engineer City of Prince George

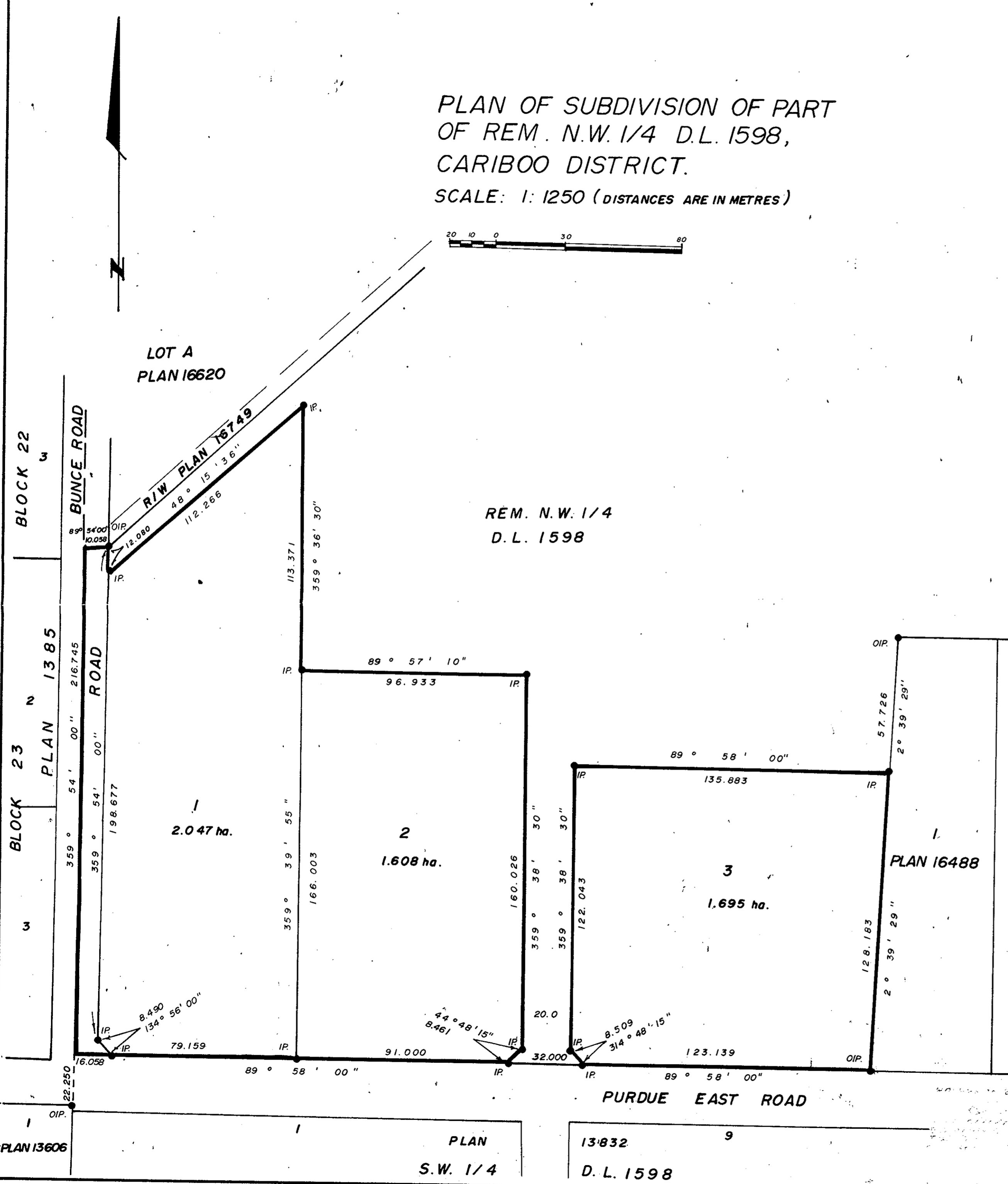
This Plan lies within the Fraser Fort George Regional District

OWNER: Roy Thomas Bryant

OWNER: Allan Castle Cox

Witness to both: Address, Postal Code, Occupation

McWilliam-Whyte-Goble & Associates B.C. Land Surveyors Kamloops-Prince George-Salmon Arm-Smithers FB/P DL 1598 File No. 81183



LOT A PLAN 16620

REM. N.W. 1/4 D.L. 1598

PLAN 16488

PLAN 13606

PLAN 13832 S.W. 1/4 D.L. 1598

52304

H.O. 5238