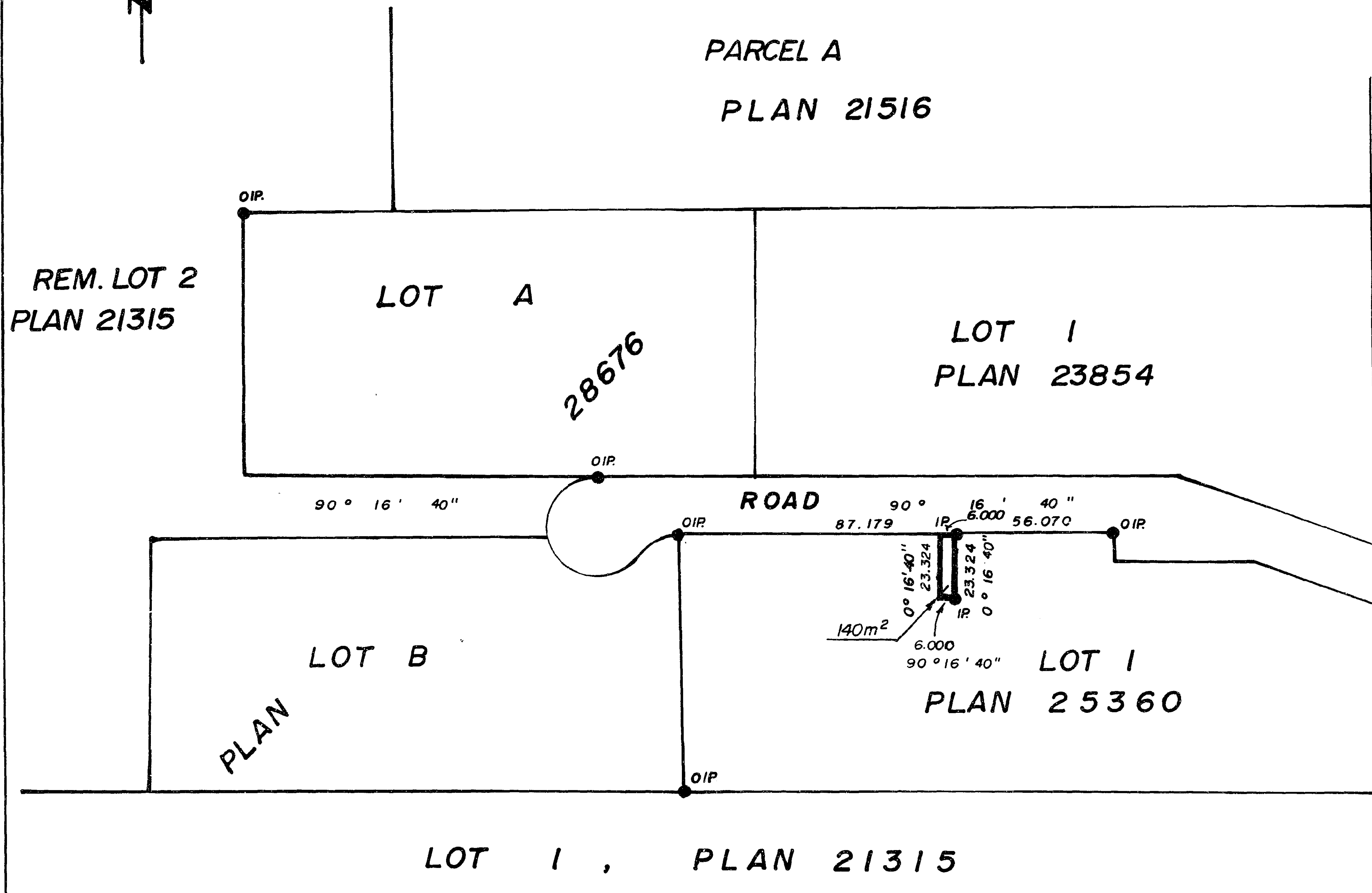


26-FF

PLAN NO. 29301

DEPOSITED IN THE LAND TITLE OFFICE AT PRINCE GEORGE  
THIS 13th DAY OF June 1983.

*E. J. Raven*  
REGISTRAR



REFERENCE PLAN OF EASEMENT  
IN LOT 1, PLAN 25360,  
DISTRICT LOT 4029,  
CARIBOO DISTRICT.

SCALE: 1: 2000 (ALL DISTANCES ARE IN METRES)



Bearings are astronomic derived from  
Plan 25360.

- I.P. .... Standard Iron Post.
- ..... Denotes "old"

I, V. Bartell, a British Columbia Land Surveyor of  
Prince George in British Columbia certify that I was  
present at and personally superintended the survey  
represented by this plan and that the survey  
and plan are correct. The said survey was  
completed on the 17 day of June 1982.

*Victor Bartell*  
V. Bartell, B.C.L.S.

This plan lies within the Fraser Fort George  
Regional District.

BOOK OF REFERENCE	
Lot 1, Plan 25360	140 m <sup>2</sup>

McWilliam, Whyte, Goble, & Associates,  
B.C. Land Surveyors,  
Prince George - Kamloops - Smithers - Salmon Arm.

REF. NO. 81226 (D.L. 4029)