

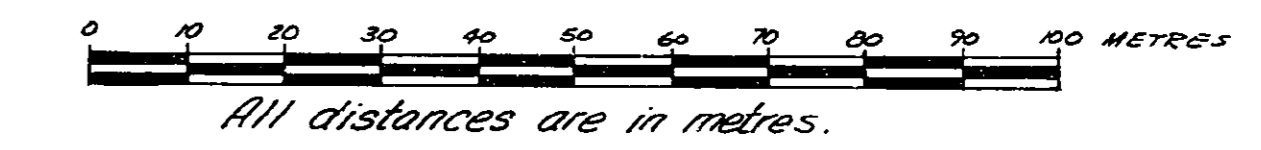
16

PLAN No 29298  
 Deposited in the Land Title Office  
 at Prince George on the 10th day  
 of June 1983

Ef. Rowe  
 Registrar

PLAN OF STATUTORY RIGHT-OF-WAY  
 FOR HIGHWAY  
 IN DISTRICT LOTS 955, 2156, 629 AND 483  
 CARIBOO DISTRICT

SCALE 1:1000



Bearings are astronomic and are referred to the  
 meridian through Long W 122° 32' 15" at Lat. N 53° 54' 39"  
 and derived from observations on the Polaris.

- PCW ..... Standard Concrete Post
- PP ..... Standard Pipe Post
- IP ..... Standard Iron Post
- CIP ..... Standard Capped Iron Post
- ..... Denoting "Old"
- WT ..... Denoting "Witness"
- 3 ..... Traverse Hub

I, V. Bartell, a British Columbia Land Surveyor,  
 of the City of Prince George, in British Columbia,  
 certify that I was present at and personally  
 supervised the survey represented by this plan,  
 and that the survey, and plan are correct. The survey  
 was completed on the 15th day of MAY 1979

V. Bartell  
 V. Bartell B.C.L.S.

Approved under the Land Title Act on the 24th day of FEBRUARY 1983

[Signature]  
 Approving Officer  
 Ministry of Transportation & Highways

This plan lies within the Fraser-Fort George Regional District.

FROM TO	BEARING	DISTANCE
1-2	97° 21' 10"	128.656
2-3	116° 28' 15"	105.510
3-4	93° 12' 40"	214.391
4-5	67° 09' 40"	98.080
5-6	85° 16' 50"	155.653
6-8	94° 28' 15"	106.835
8-109	101° 56' 15"	73.168
109-113	112° 00' 40"	89.433
113-115	108° 14' 55"	106.379
115-118	102° 13' 40"	158.181
118-123	109° 02' 15"	193.577
123-130	103° 40' 25"	201.120
130-100	79° 09' 00"	161.994
123-124	134° 54' 05"	127.166
124-243	170° 59' 00"	411.559

BOOK OF REFERENCE					
DESCRIPTION	AREA	DESCRIPTION	AREA	DESCRIPTION	AREA
PLAN 902 DL 629		PLAN 902 DL 629		PLAN 902 DL 629	
Blk 1 Part Lot 1	263.9m <sup>2</sup>	Blk 18 Part Lot 5	2579m <sup>2</sup>	Blk 20 Lot 15	306.0m <sup>2</sup>
" Part Lot 2	2700m <sup>2</sup>	" Part Lot 6	2397m <sup>2</sup>	" Lot 16	306.0m <sup>2</sup>
" Part Lot 3	279.1m <sup>2</sup>	" Part Lot 7	2188m <sup>2</sup>	" Lot 17	306.1m <sup>2</sup>
" Part Lot 4	2880m <sup>2</sup>	" Part Lot 8	1982m <sup>2</sup>	" Lot 18	306.1m <sup>2</sup>
" Part Lot 5	2995m <sup>2</sup>	" Part Lot 9	1786m <sup>2</sup>	" Lot 19	306.2m <sup>2</sup>
Blk 1 Lot 6	302.3m <sup>2</sup>	Blk 14 Part Lot 10	1591m <sup>2</sup>	Blk 20 Lot 20	306.2m <sup>2</sup>
" Lot 7	302.3m <sup>2</sup>	" Part Lot 11	1397m <sup>2</sup>	" Lot 21	306.3m <sup>2</sup>
" Lot 8	302.4m <sup>2</sup>	" Part Lot 12	1023m <sup>2</sup>	" Lot 22	306.3m <sup>2</sup>
" Lot 9	302.4m <sup>2</sup>	" Part Lot 13	1009m <sup>2</sup>	" Lot 23	306.4m <sup>2</sup>
" Lot 10	302.5m <sup>2</sup>	" Part Lot 14	8145m <sup>2</sup>	" Lot 24	306.4m <sup>2</sup>
Blk 1 Lot 11	302.5m <sup>2</sup>	Blk 14 Part Lot 15	6204m <sup>2</sup>	Blk 20 Part Lot 25	53.34m <sup>2</sup>
" Lot 12	302.6m <sup>2</sup>	" Part Lot 16	4261m <sup>2</sup>	" Part Lot 26	53.34m <sup>2</sup>
" Lot 13	302.6m <sup>2</sup>	" Part Lot 17	2320m <sup>2</sup>	" Part Lot 27	53.34m <sup>2</sup>
" Lot 14	302.7m <sup>2</sup>	" Part Lot 18	4.69m <sup>2</sup>	" Part Lot 28	53.34m <sup>2</sup>
" Lot 15	302.7m <sup>2</sup>	" Part Lot 19	1917m <sup>2</sup>	" Part Lot 29	53.34m <sup>2</sup>
Blk 1 Lot 16	302.8m <sup>2</sup>	Blk 14 Part Lot 20	2121m <sup>2</sup>	Blk 20 Part Lot 30	53.34m <sup>2</sup>
" Lot 17	302.8m <sup>2</sup>	" Part Lot 21	2315m <sup>2</sup>	" Part Lot 31	53.34m <sup>2</sup>
" Lot 18	302.9m <sup>2</sup>	" Part Lot 22	2508m <sup>2</sup>	" Part Lot 32	53.34m <sup>2</sup>
" Lot 19	302.9m <sup>2</sup>	" Part Lot 23	2002m <sup>2</sup>	" Part Lot 33	53.34m <sup>2</sup>
" Lot 20	303.0m <sup>2</sup>	" Part Lot 24	2875m <sup>2</sup>	" Part Lot 34	53.34m <sup>2</sup>
Blk 1 Lot 21	303.0m <sup>2</sup>	Blk 14 Part Lot 25	3042m <sup>2</sup>	Blk 20 Part Lot 35	53.34m <sup>2</sup>
" Lot 22	303.0m <sup>2</sup>	" Lot 26	3051m <sup>2</sup>	" Lot 36	306.9m <sup>2</sup>
" Lot 23	303.1m <sup>2</sup>	" Lot 27	3050m <sup>2</sup>	" Lot 37	305.9m <sup>2</sup>
" Lot 24	303.1m <sup>2</sup>	" Lot 28	3050m <sup>2</sup>	" Lot 38	305.8m <sup>2</sup>
" Lot 25	303.1m <sup>2</sup>	" Lot 29	3050m <sup>2</sup>	" Lot 39	305.8m <sup>2</sup>
Blk 1 Lot 26	303.0m <sup>2</sup>	Blk 14 Lot 30	3049m <sup>2</sup>	Blk 20 Lot 40	305.7m <sup>2</sup>
" Lot 27	303.0m <sup>2</sup>	" Lot 31	3049m <sup>2</sup>	Blk 20 Part Lot 41	229.3m <sup>2</sup>
" Lot 28	302.9m <sup>2</sup>	" Lot 32	3048m <sup>2</sup>	Blk 20 Part Lot 42	76.43m <sup>2</sup>
" Part Lot 29	302.4m <sup>2</sup>	" Lot 33	3048m <sup>2</sup>	Blk 20 Part Lot 43	57.14m <sup>2</sup>
" Part Lot 30	285.8m <sup>2</sup>	" Lot 34	3004m <sup>2</sup>	" Part Lot 44	1710m <sup>2</sup>
Blk 1 Part Lot 31	261.9m <sup>2</sup>	Blk 14 Part Lot 35	2845m <sup>2</sup>	" Lot 45	306.5m <sup>2</sup>
" Part Lot 32	238.1m <sup>2</sup>	" Part Lot 36	2679m <sup>2</sup>	" Lot 46	306.5m <sup>2</sup>
" Part Lot 33	214.2m <sup>2</sup>	" Part Lot 37	2514m <sup>2</sup>	" Lot 47	306.5m <sup>2</sup>
" Part Lot 34	190.3m <sup>2</sup>	" Part Lot 38	2348m <sup>2</sup>	Blk 20 Part Lot 48	167.2m <sup>2</sup>
" Part Lot 35	166.4m <sup>2</sup>	" Part Lot 39	2182m <sup>2</sup>	Blk 20 Part Lot 49	115.2m <sup>2</sup>
Blk 1 Part Lot 36	146.6m <sup>2</sup>	Blk 14 Part Lot 40	2016m <sup>2</sup>	" Part Lot 50	306.2m <sup>2</sup>
" Part Lot 37	119.0m <sup>2</sup>	" Part Lot 41	1850m <sup>2</sup>	" Lot 51	306.5m <sup>2</sup>
" Part Lot 38	96.82m <sup>2</sup>	Blk 14 Part Lot 42	1684m <sup>2</sup>	" Lot 52	306.5m <sup>2</sup>
" Part Lot 39	76.35m <sup>2</sup>	Blk 14 Part Lot 43	1534m <sup>2</sup>	" Part Lot 53	225.2m <sup>2</sup>
" Part Lot 40	57.52m <sup>2</sup>	Blk 15 Part Lot 1	1534m <sup>2</sup>	Blk 20 Part Lot 54	146m <sup>2</sup>
Blk 1 Part Lot 41	40.28m <sup>2</sup>	Blk 15 Part Lot 2	3405m <sup>2</sup>	Blk 20 Part Lot 55	139m <sup>2</sup>
" Part Lot 42	24.40m <sup>2</sup>	" Part Lot 3	5220m <sup>2</sup>	Blk 20 Part Lot 56	137.3m <sup>2</sup>
" Part Lot 43	10.44m <sup>2</sup>	" Part Lot 4	6978m <sup>2</sup>	" Lot 57	306.5m <sup>2</sup>
Blk 1 Part Lot 44	0.6012m <sup>2</sup>	" Part Lot 5	8681m <sup>2</sup>	" Lot 58	306.5m <sup>2</sup>
Blk 2 Lot 1	303.3m <sup>2</sup>	Blk 15 Part Lot 6	1093m <sup>2</sup>	" Lot 59	306.5m <sup>2</sup>
" Lot 2	303.3m <sup>2</sup>	" Part Lot 7	1192m <sup>2</sup>	" Lot 60	189.4m <sup>2</sup>
" Lot 3	303.4m <sup>2</sup>	" Part Lot 8	1346m <sup>2</sup>	Blk 20 Part Lot 61	87033m <sup>2</sup>
" Lot 4	303.4m <sup>2</sup>	" Part Lot 9	1494m <sup>2</sup>	" Part Lot 62	137.3m <sup>2</sup>
" Lot 5	303.5m <sup>2</sup>	" Part Lot 10	1637m <sup>2</sup>	" Lot 63	306.5m <sup>2</sup>
Blk 2 Lot 6	303.5m <sup>2</sup>	Blk 15 Part Lot 11	1775m <sup>2</sup>	" Lot 64	306.5m <sup>2</sup>
" Part Lot 7	360m <sup>2</sup>	" Part Lot 12	1907m <sup>2</sup>	" Lot 65	306.5m <sup>2</sup>
" Part Lot 8	16.08m <sup>2</sup>	" Part Lot 13	2037m <sup>2</sup>	" Part Lot 66	184.2m <sup>2</sup>
" Part Lot 9	28.97m <sup>2</sup>	" Part Lot 14	2166m <sup>2</sup>	Blk 20 Part Lot 67	00451m <sup>2</sup>
" Part Lot 10	41.06m <sup>2</sup>	" Part Lot 15	2294m <sup>2</sup>	Blk 20 Part Lot 68	1101m <sup>2</sup>
Blk 2 Part Lot 11	54.75m <sup>2</sup>	Blk 15 Part Lot 16	2423m <sup>2</sup>	" Part Lot 69	305.9m <sup>2</sup>
" Part Lot 12	67.64m <sup>2</sup>	" Part Lot 17	2557m <sup>2</sup>	" Lot 70	306.5m <sup>2</sup>
" Part Lot 13	80.95m <sup>2</sup>	" Part Lot 18	2681m <sup>2</sup>	" Lot 71	306.5m <sup>2</sup>
" Part Lot 14	93.43m <sup>2</sup>	" Lot 19	3040m <sup>2</sup>	" Part Lot 72	2100m <sup>2</sup>
" Part Lot 15	106.3m <sup>2</sup>	" Lot 20	3041m <sup>2</sup>	Blk 20 Part Lot 73	209m <sup>2</sup>
Blk 2 Part Lot 16	119.5m <sup>2</sup>	Blk 15 Lot 21	3041m <sup>2</sup>	" Part Lot 74	1597m <sup>2</sup>
" Part Lot 17	133.1m <sup>2</sup>	" Lot 22	3041m <sup>2</sup>	" Lot 75	306.5m <sup>2</sup>
" Part Lot 18	147.4m <sup>2</sup>	" Lot 23	3042m <sup>2</sup>	" Lot 76	306.5m <sup>2</sup>
" Part Lot 19	162.2m <sup>2</sup>	" Lot 24	3042m <sup>2</sup>	" Lot 77	306.5m <sup>2</sup>
" Part Lot 20	177.5m <sup>2</sup>	Blk 15 Part Lot 25	2201m <sup>2</sup>	Blk 20 Part Lot 78	1618m <sup>2</sup>
Blk 2 Part Lot 21	193.6m <sup>2</sup>	Blk 15 Part Lot 26	2545m <sup>2</sup>	Blk 20 Part Lot 79	922m <sup>2</sup>
" Part Lot 22	210.1m <sup>2</sup>	" Part Lot 27	2636m <sup>2</sup>	" Part Lot 80	303.4m <sup>2</sup>
" Lot 23	303.5m <sup>2</sup>	" Part Lot 28	1273m <sup>2</sup>	" Lot 81	306.5m <sup>2</sup>
" Lot 24	303.4m <sup>2</sup>	Blk 15 Part Lot 29	1781m <sup>2</sup>	" Lot 82	306.5m <sup>2</sup>
" Lot 25	303.4m <sup>2</sup>	Blk 15 Part Lot 30	2291m <sup>2</sup>	" Part Lot 83	228.5m <sup>2</sup>
Blk 2 Lot 26	303.3m <sup>2</sup>	Blk 15 Lot 1	2799m <sup>2</sup>	Blk 20 Part Lot 84	575m <sup>2</sup>
" Lot 27	303.3m <sup>2</sup>	Blk 20 Lot 1	3054m <sup>2</sup>	" Part Lot 85	00139m <sup>2</sup>
" Lot 28	302.2m <sup>2</sup>	" Lot 2	3054m <sup>2</sup>	" Part Lot 86	182.0m <sup>2</sup>
Blk 15 Part Lot 29	6.468m <sup>2</sup>	" Lot 3	3055m <sup>2</sup>	" Lot 87	306.5m <sup>2</sup>
" Part Lot 30	25.49m <sup>2</sup>	" Lot 4	3055m <sup>2</sup>	" Lot 88	306.5m <sup>2</sup>
" Part Lot 31	44.02m <sup>2</sup>	" Lot 5	3055m <sup>2</sup>	" Lot 89	306.5m <sup>2</sup>
" Part Lot 32	64.11m <sup>2</sup>	Blk 20 Lot 6	3056m <sup>2</sup>	Blk 20 Part Lot 90	139.4m <sup>2</sup>
Blk 15 Part Lot 33	33.31m <sup>2</sup>	" Lot 7	3056m <sup>2</sup>	Total All Roads PLAN 902	1763 ha
" Part Lot 34	102.9m <sup>2</sup>	" Lot 8	3057m <sup>2</sup>	D. L. 483	0.7411 ha
Blk 15 Part Lot 35	122.2m <sup>2</sup>	" Lot 9	3057m <sup>2</sup>	D. L. 955	3.124 ha
Blk 14 Lot 1	304.4m <sup>2</sup>	" Lot 10	3058m <sup>2</sup>	Blk A PLAN B-888 DL 958	1.178 ha
" Part Lot 2	304.2m <sup>2</sup>	Blk 20 Lot 11	3058m <sup>2</sup>	LOT A PLAN 5588 DL 2156	0.5813 ha
" Part Lot 3	293.5m <sup>2</sup>	" Lot 12	3059m <sup>2</sup>	OVER PLAN M-131	605.2 m <sup>2</sup>
Blk 14 Part Lot 4	276.1m <sup>2</sup>	Blk 20 Lot 13	3059m <sup>2</sup>		
		Blk 20 Lot 14	3059m <sup>2</sup>		



15



DETAIL A  
SCALE 1:500



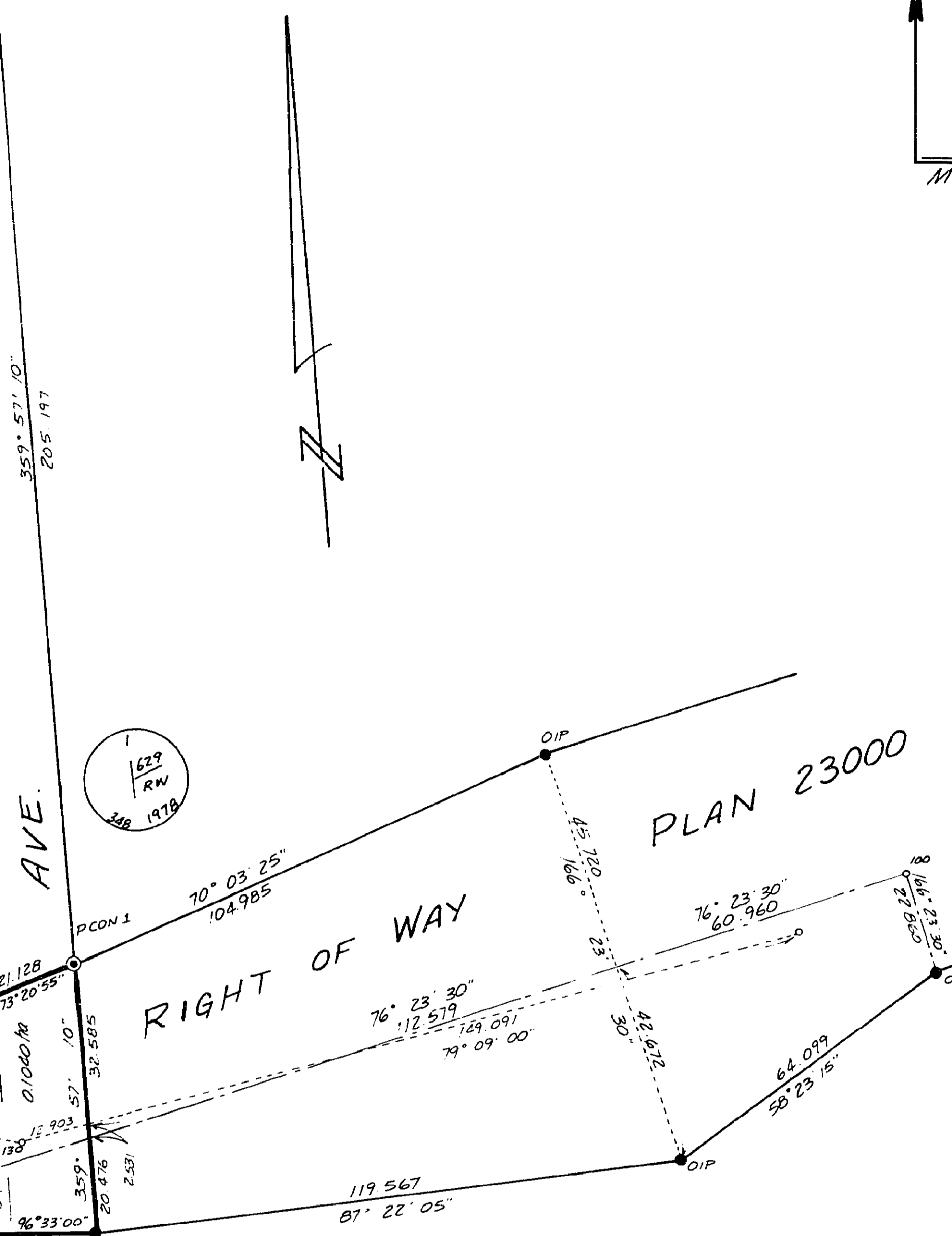


D.L. 2155



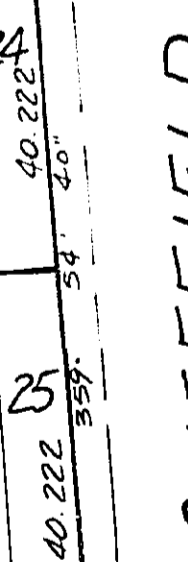
2155  
N 1629  
W 1976

O.C.P. 89° 46' 30"



PLAN 23000

REM. N.E. 1/4 D.L. 629  
C/T 14794 M



1629  
N 1629  
W 1976

O.C.P. 89° 46' 30"

2155

1976

1629

1629

1976

1629

1629

1976

1629

1629

1976

1629

1629

1976

1629

1629

1976

1629

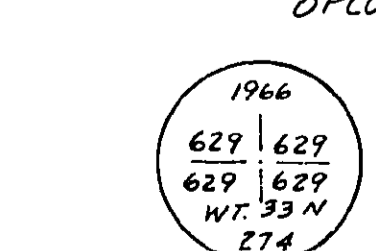
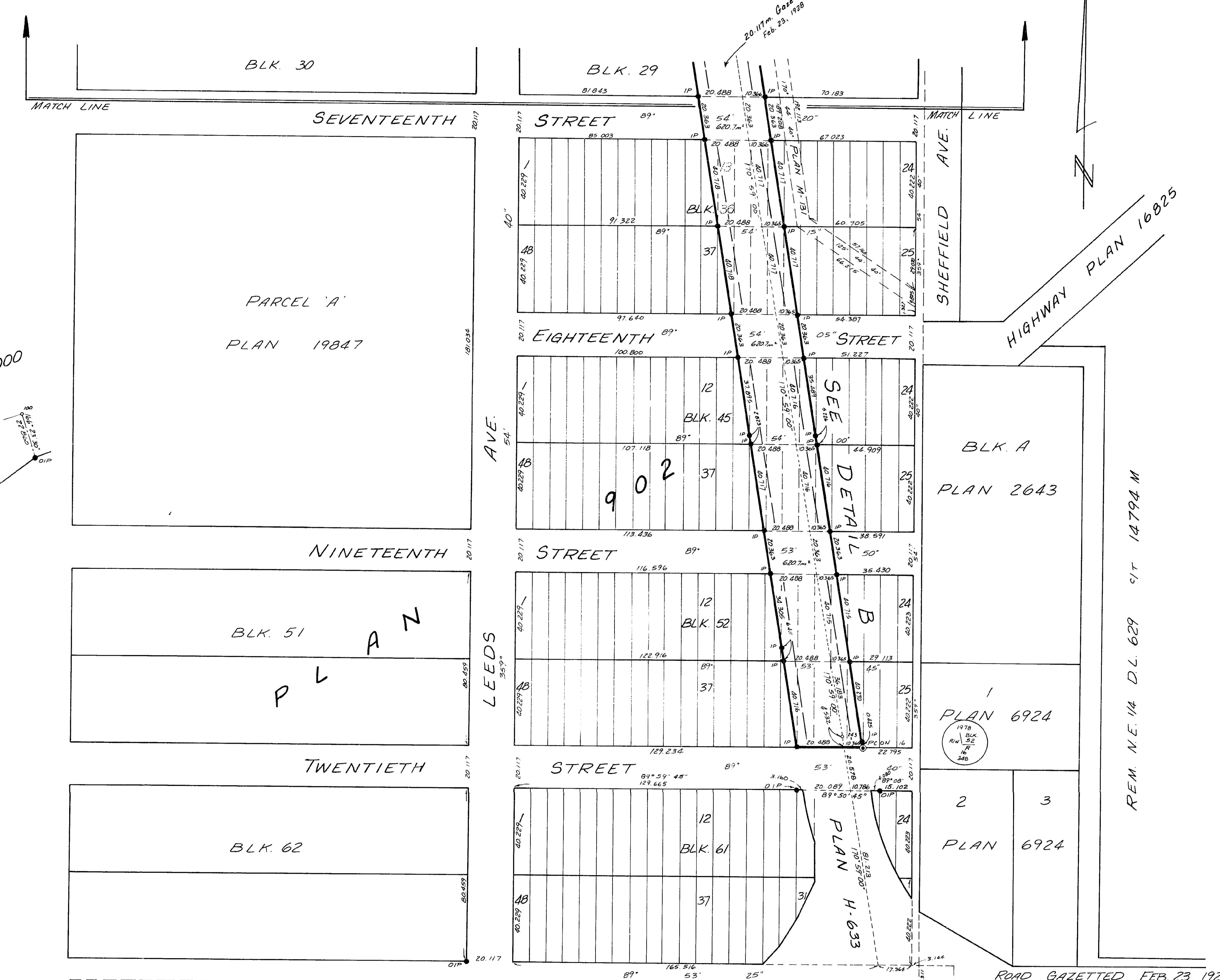
1629

1976

1629

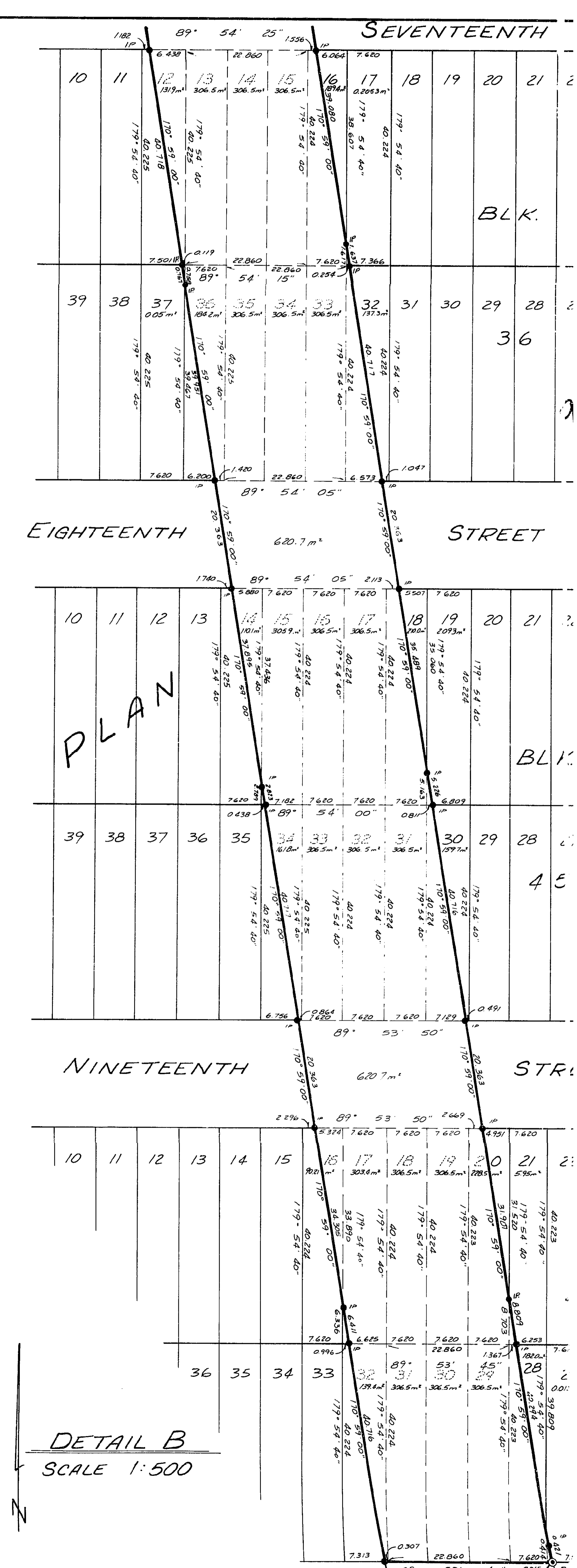
1629

1976



1966  
629  
629  
W 1976  
N 1629

REM. S.E. 1/4 D.L. 629  
C/T 13833 M

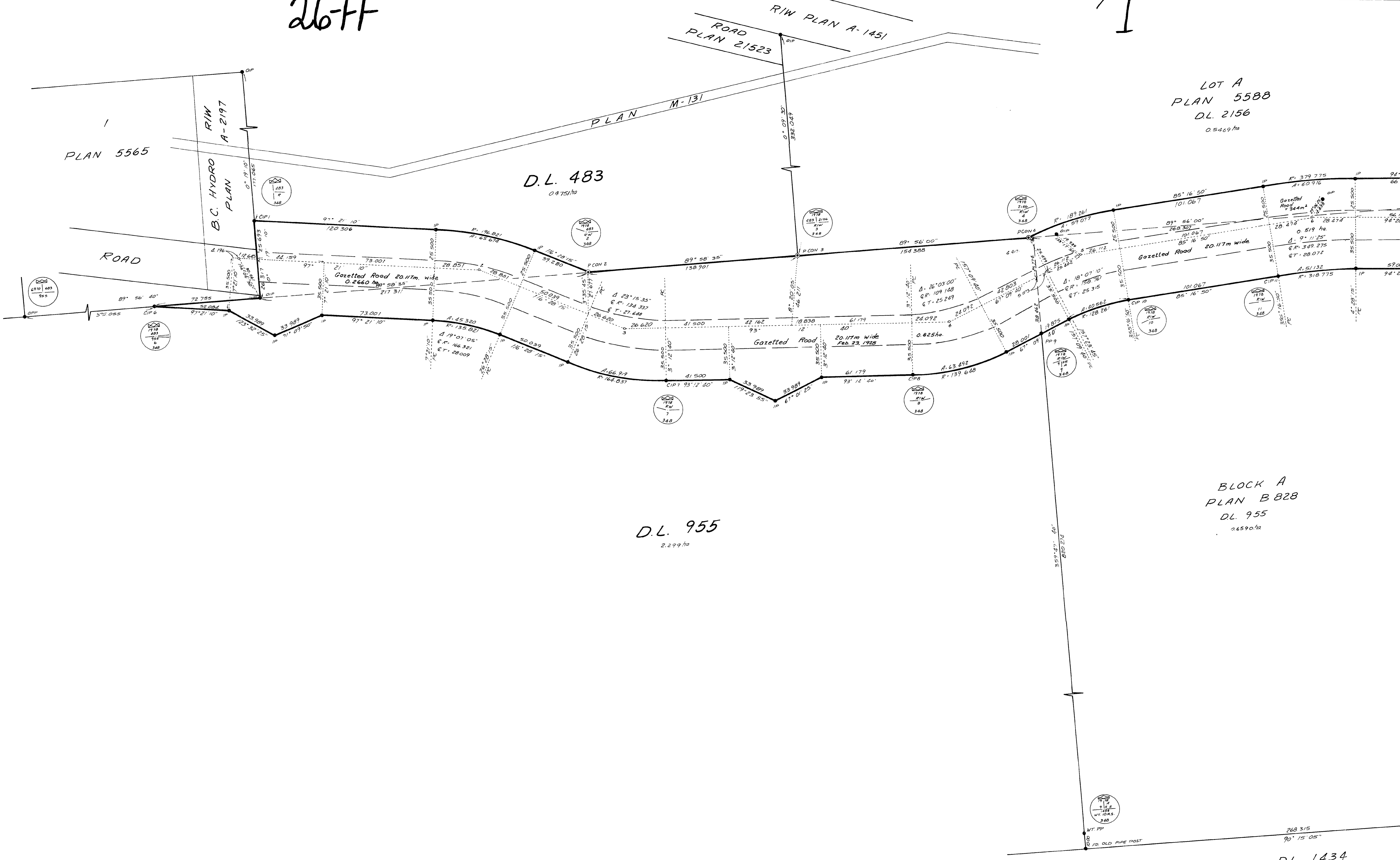


DETAIL B  
SCALE 1:500



26-FF

1



LOT A  
 PLAN 5588  
 DL. 2156  
 0.5469 ha

D.L. 483  
 0.4751 ha

D.L. 955  
 2.299 ha

BLOCK A  
 PLAN B 828  
 DL. 955  
 2.6590 ha

DL. 1434