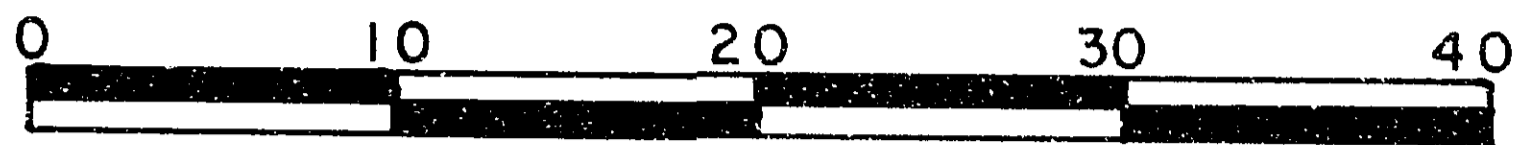


26FF-226

PLAN OF EASEMENT THROUGH
LOT A, PLAN 20275
DISTRICT LOT 753
CARIBOO DISTRICT — BRITISH COLUMBIA
SCALE: 1:500



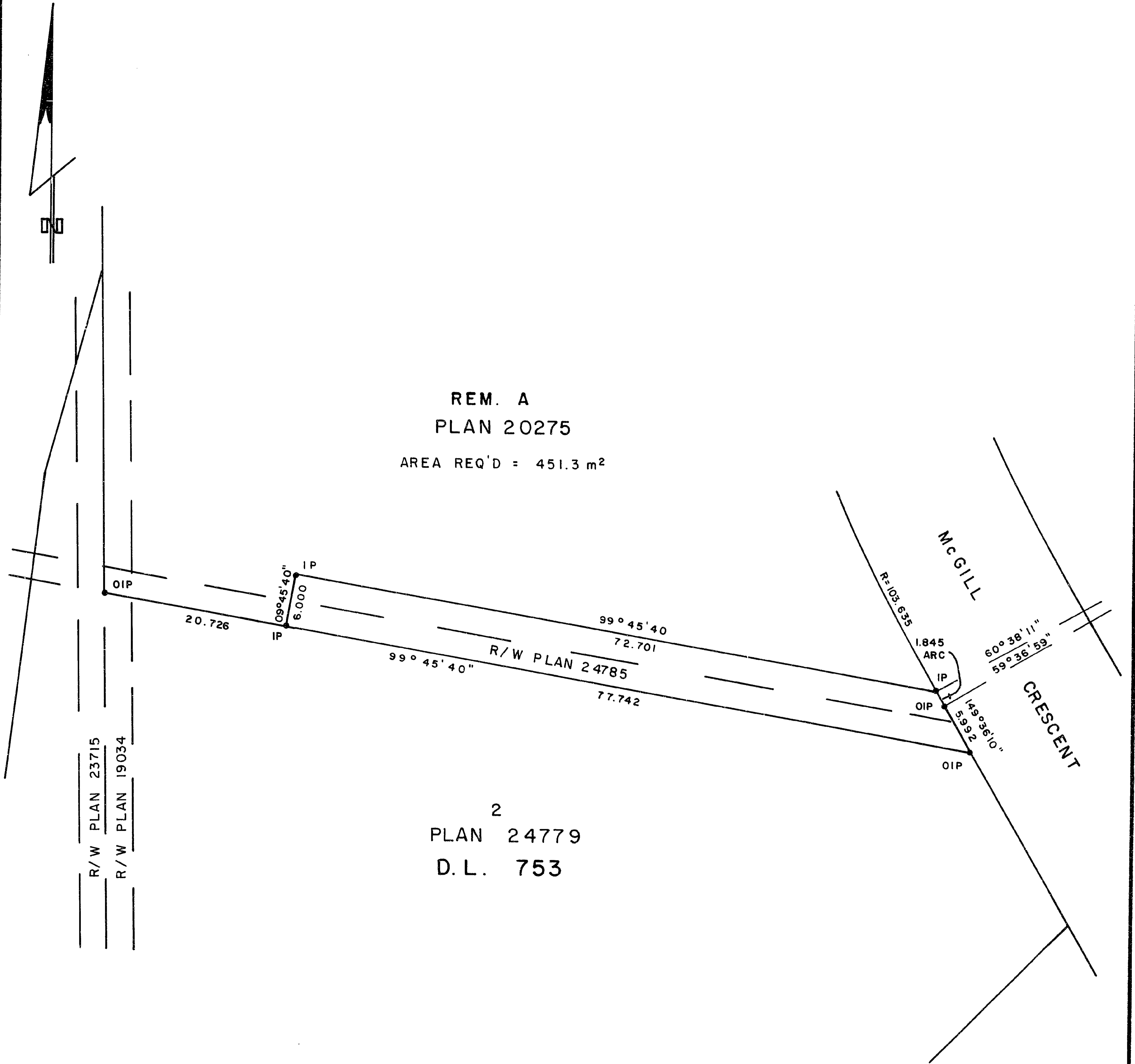
NOTE: Bearings are astronomic, derived from the north boundary of Lot 2, Plan 24779.

LEGEND: • OIP denotes an old iron pin found.
• IP denotes an iron pin set.

PLAN No **29288**

Deposited in the Land Title Office at Prince George, B.C. this 8th day of June, 1983.

E.S. Raven per gr.
Registrar



REM. A
PLAN 20275
AREA REQ'D = 451.3 m²

2
PLAN 24779
D.L. 753

I, DONALD A. DUFFY, a British Columbia Land Surveyor, of Prince George, in British Columbia, certify that I was present at and did personally superintend the survey represented by this plan, and that the survey and plan are correct. The survey was completed on the 14 day of AUG., 1981.

This plan lies within the Fraser-Fort George Regional District.

W. D. USHER & ASSOCIATES
LAND SURVEYORS
PRINCE GEORGE — B.C.
OJ 4! 13003