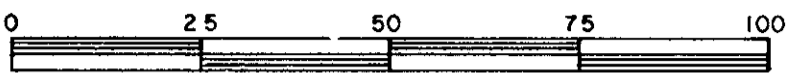


PLAN OF SUBDIVISION OF PART OF
S.W. 1/4 DISTRICT LOT 2425
CARIBOO DISTRICT - BRITISH COLUMBIA

SCALE: 1 : 1000



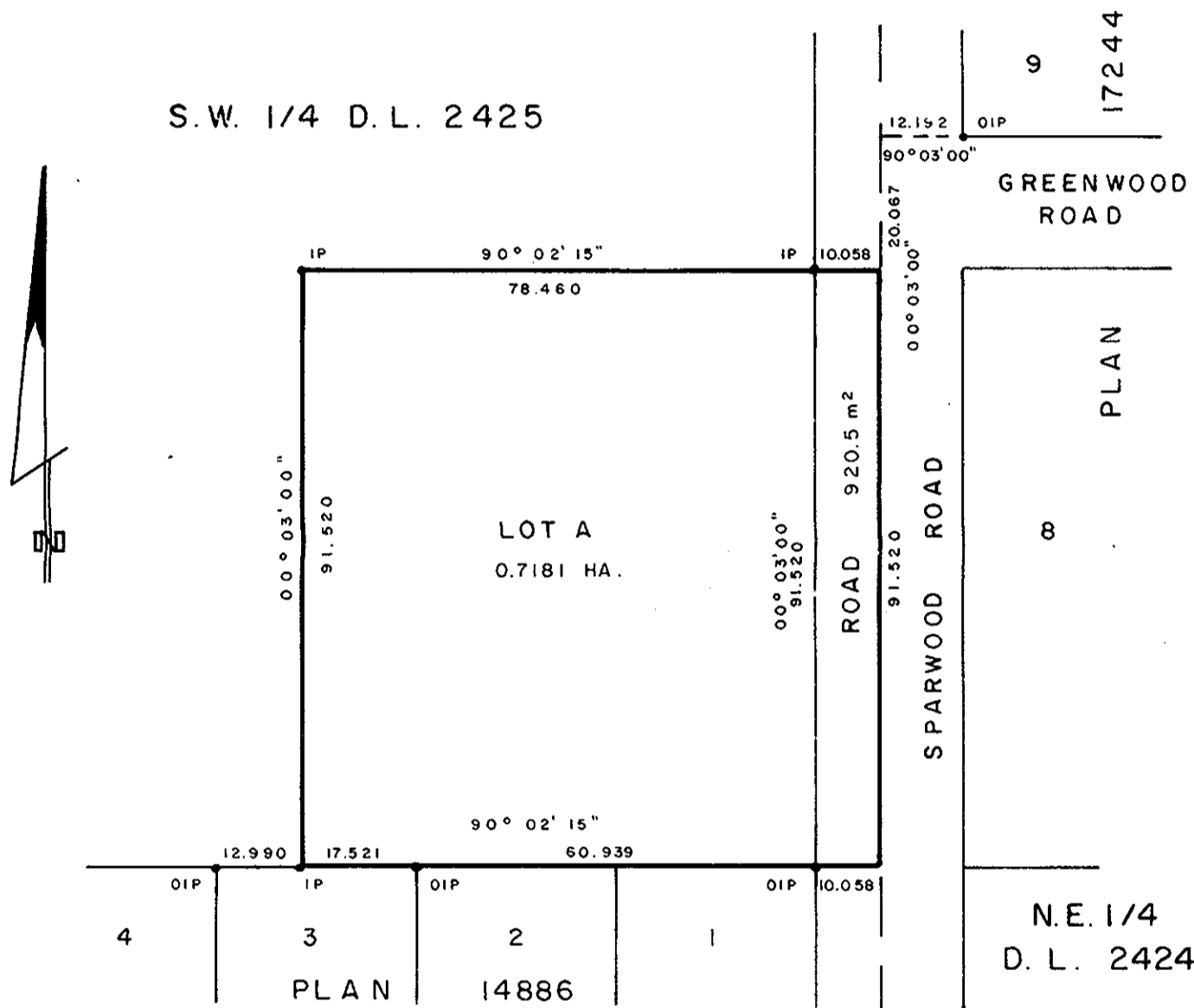
NOTE: Bearings are astronomic, derived from the east boundary of S.W. 1/4 D.L. 2425 as shown on Plan 17244.

LEGEND: • OIP denotes an old iron pin found.
• IP denotes an iron pin set.

PLAN No 29255

Deposited in the Land Title Office at Prince George, B.C. this 31 day of May, 1983.

Registrar *P.S. [Signature]*



Owner *G. Wright*
Witness *J.S. Matheson*
101-1268 5th Ave
Prince George BC
mortgage broken

MORTGAGEE
KAY THOMAS EKYANT
ALLAN LESLIE COX
MORINVEST CAPITAL CORPORATION INC.

Witness:
M. Mulford
26 Barton Sq VICTORIA
solicitor

I, DONALD A. DUFFY, a British Columbia Land Surveyor, of Prince George, in British Columbia, certify that I was present at and did personally superintend the survey represented by this plan, and that the survey and plan are correct. The survey was completed on the 1st day of Nov. 1982.

[Signature]

J.S. Matheson
Authorized Signatory
Authorized Signatory
RAEBER INVESTMENTS LTD.
Authorized Signatory
Pres.
Authorized Signatory

Approved under the Land Title Act this 16 day of DEC., 1982

C.E. Olet
Approving Officer, City of Prince George
Reapproved MAY 13, 1983
Colin S. Wright
This plan lies within the Fraser-Fort George Regional District.

W. D. USHER & ASSOCIATES
LAND SURVEYORS
PRINCE GEORGE - B.C.
OH 74 7 018