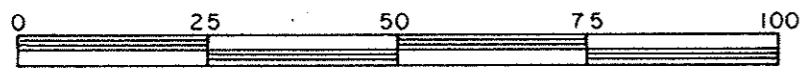


REFERENCE PLAN OF  
ROAD DEDICATION THROUGH  
LOT 1, PLAN 20236  
DISTRICT LOT 2400  
CARIBOO DISTRICT— BRITISH COLUMBIA  
SCALE: 1 : 1000

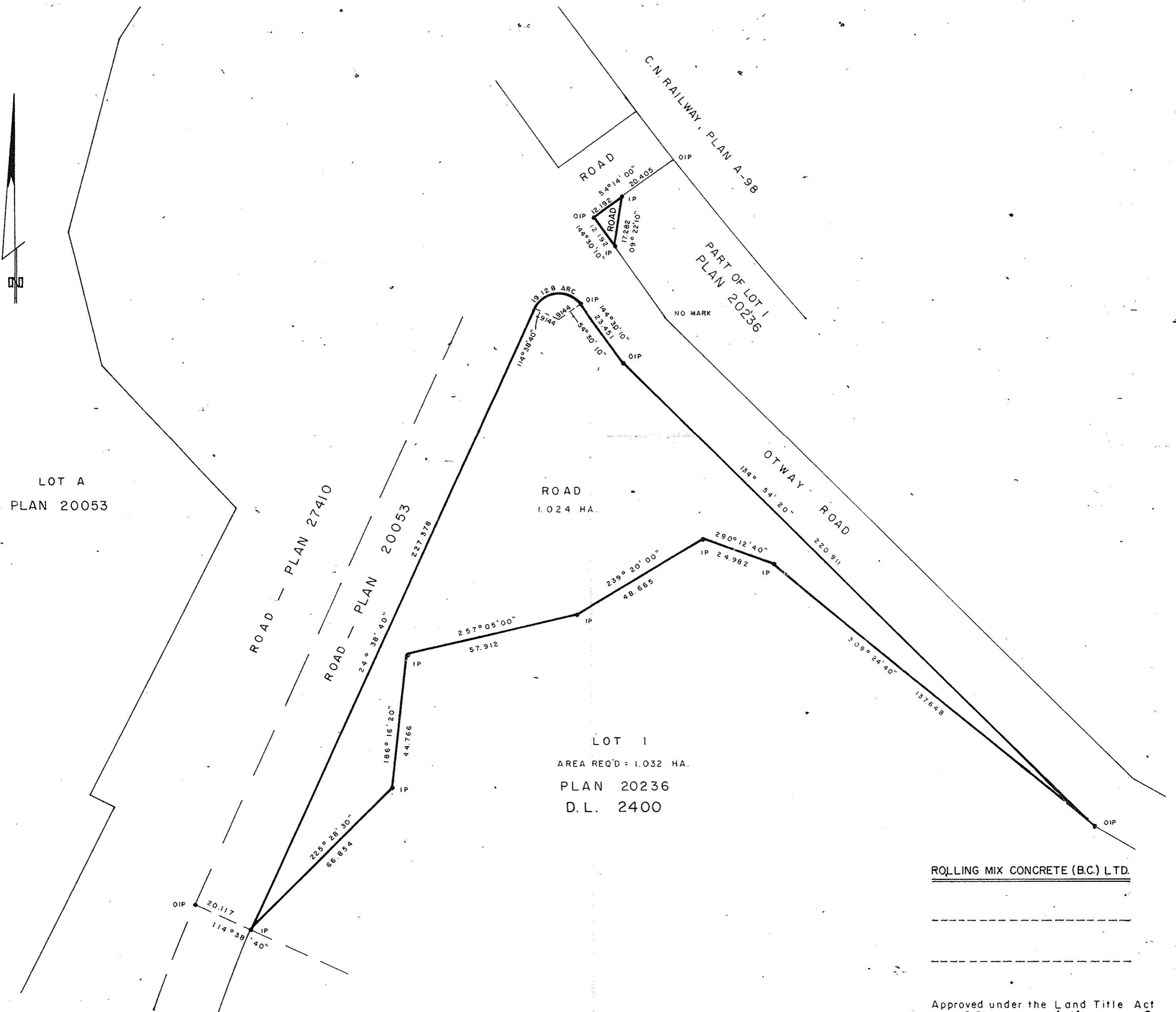


NOTE: Bearings are astronomic, derived from the northeasterly boundary of Lot 1, Plan 20236.

LEGEND: • OIP denotes an old iron pin found.  
• IP denotes an iron pin set.

PLAN No 29249  
Deposited in the Land Title Office at Prince George, B.C. this 31st day of May, 1983.  
EJR  
Registrar

*REVISED*



I, DONALD A. DUFFY, a British Columbia Land Surveyor, of Prince George, in British Columbia, certify that I was present at and did personally superintend the survey represented by this plan, and that the survey and plan are correct. The survey was completed on the 26 day of OCT., 19 82.

*[Signature]*

T.K.S. DEVELOPMENTS LTD.  
*[Signature]*  
Authorized Signatory  
*[Signature]*  
Authorized Signatory

ROLLING MIX CONCRETE (B.C.) LTD.

Approved under the Land Title Act this 23 day of NOV., 1982

*[Signature]*  
Approving Officer, City of Prince George  
Reapproved Apr. 12, 1983  
*[Signature]*  
This plan lies within the Fraser-Fort George Regional District.