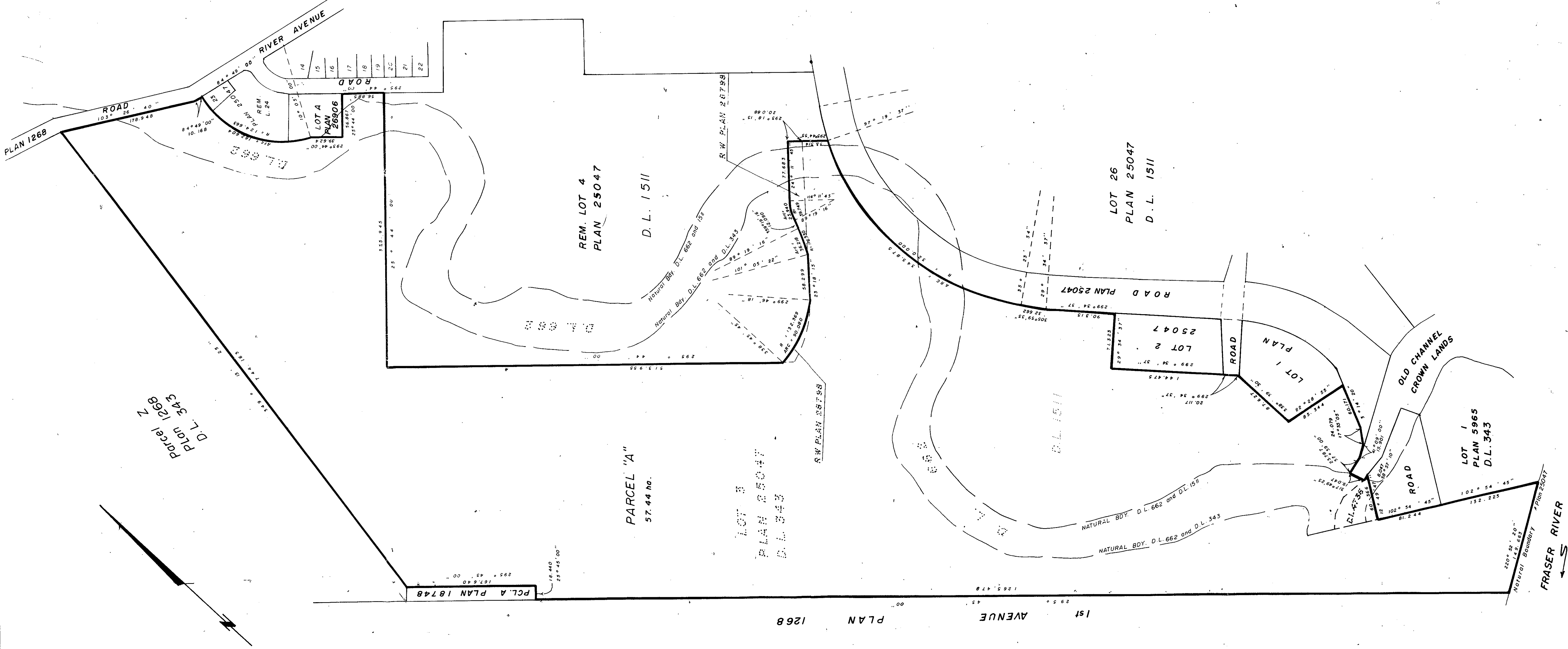


PLAN NO. 29240

DEPOSITED IN THE LAND TITLE OFFICE AT PRINCE GEORGE  
THIS 30th DAY OF May 1983.

REGISTRAR



EXPLANATORY PLAN  
 CONSOLIDATING LOT 3, PLAN 25047  
 AND THAT PART OF LOT 4, PLAN 25047  
 SHOWN ON STATUTORY RIGHT-OF-WAY  
 PLAN 28798, DISTRICT LOTS 343,  
 662, 1511 and 4736,  
 CARIBOO DISTRICT.

SCALE: 1:2500 (DISTANCES ARE IN METRES)



CERTIFIED CORRECT  
 ACCORDING TO LAND TITLE OFFICE RECORDS  
 THIS 22nd DAY OF May 1983.

VICTOR BARTELL, B.C.L.S.

THIS PLAN LIES WITHIN THE FRASER FORT  
 GEORGE REGIONAL DISTRICT.

WILLIAM, WYTHE, GOBLE, & ASSOCIATES,  
 B.C. LAND SURVEYORS,  
 PRINCE GEORGE - KAMLOOPS - SMITHERS - SALMON ARM  
 REF. NO. 83041