

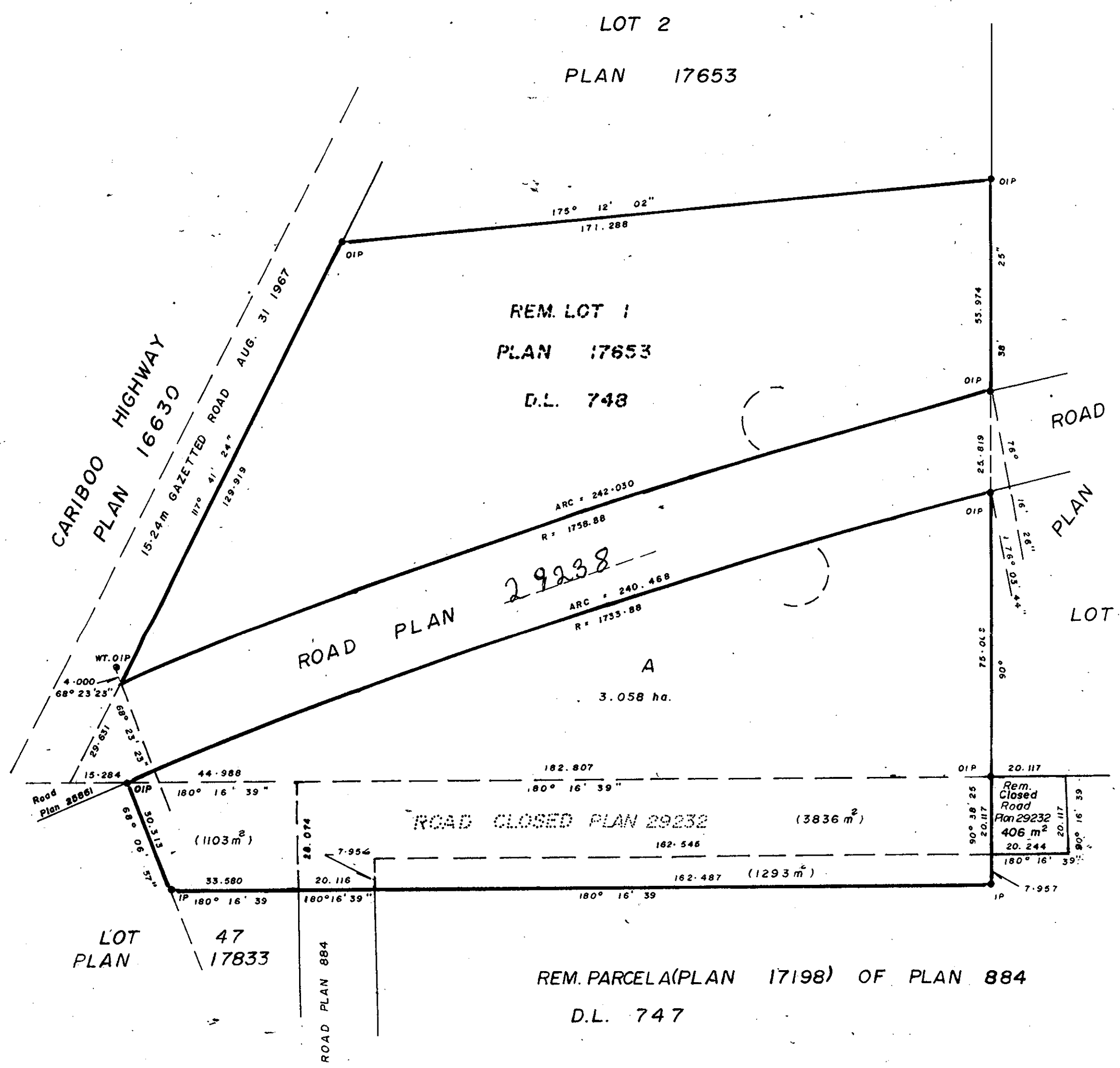
PLOTTED

PLAN 29239
Deposited in the Land Title Office
at Prince George, B.C.
on the 27 day of May 1983

[Signature]
Registrar

PLAN OF SUBDIVISION OF REM. LOT 1 PLAN 17653, D.L. 748,
PART OF CLOSED ROAD BY LAW PLAN 29232,
and PART of REM. PARCEL A (PLAN 17198) OF PLAN 884
and PART of LOT 47, PLAN 17833, D.L. 747, CARIBOO DISTRICT.

Scale, 1:1000
20 10 0 25 50
ALL DISTANCES ARE IN METERS.



Bearings are astronomic and are derived from
PLAN 25765

- ⊙ P.con. Standard Concrete Post.
- ⊙ P.Rock Standard Rock Post.
- P.P. Standard Pipe Post.
- I.P. Standard Iron Post.
- P. Wooden Post.
- L.P. Lead Plug.
- Denoting "Old"
- WT. Denoting "Witness"
- C.I.P. Capped Iron Post.
- T.H. Traverse Hub.

I, V. BARTELL, a British Columbia
land surveyor, of PRINCE GEORGE
in British Columbia, certify that I was present
at and personally superintended the survey
represented by this plan, and that the survey
and plan are correct. The survey was completed
on the 27 day of August 19 81.

[Signature]

Approved under the Land Title Act on
the 3rd day of NOV. 1981

[Signature]
Approving Officer
City of Prince George

This Plan lies within the FRASER FORT GEORGE
Regional District

Reapproved Feb 4, 1982
[Signature]

Re Approved
this 20 day of JAN. 1983 CEO

[Signature]
Approving Officer
City of Prince George

LAKELAND MILLS (1973) INCORPORATION # 115260
LTD.
AUTHORIZED SIGNATORIES

THE ROYAL BANK OF CANADA
LAWFUL
AUTHORIZED SIGNATORIES

BRITISH COLUMBIA RAILWAY COMPANY
AUTHORIZED SIGNATORIES

[Signature]

[Signature]
[Signature]

[Signature]

McWilliam-Whyte-Goble & Associates
B.C. Land Surveyors
Kamloops-Prince George-Salmon Arm-Smithers
FB/P File No. 81184-C

W18-3-82 F5-1995.7