

PLOTTED

KE

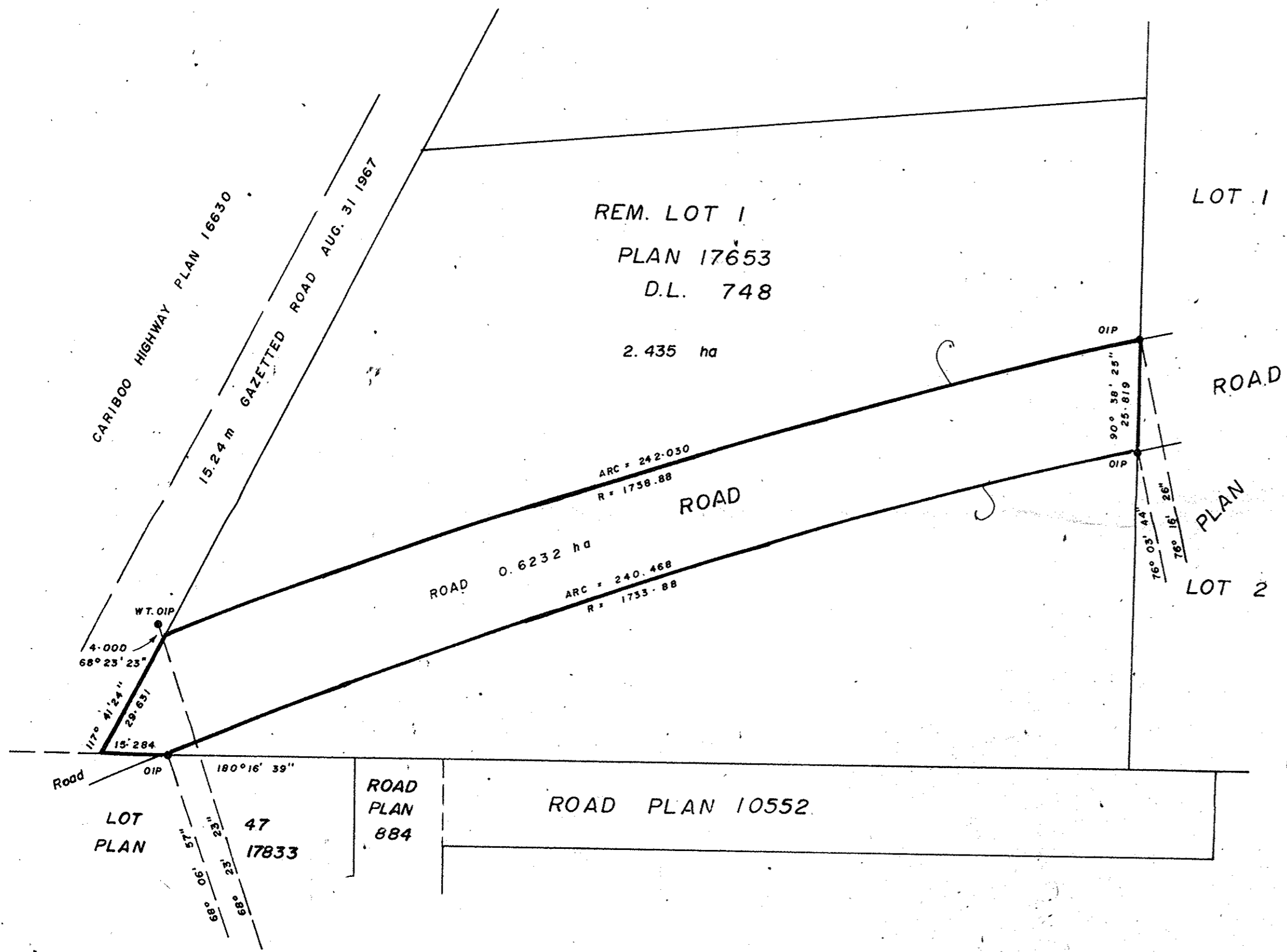
LOT 2
PLAN 17653

PLAN 29238
Deposited in the Land Title Office
at Prince George, B.C.
on the 27 day of May 1983

E. J. Rowe
Registrar

REFERENCE PLAN TO ACCOMPANY BY LAW 3835
CITY OF PRINCE GEORGE
DEDICATION OF ROAD OF PART OF LOT 1, PLAN 17653
D.L. 748, CARIBOO DISTRICT.

Scale, 1:1000
20 10 0 25 50
ALL DISTANCES ARE IN METERS.



Bearings are astronomic and are derived from
PLAN 25765

- ⊙ P.con. Standard Concrete Post.
- ⊙ P.Rock Standard Rock Post.
- PP Standard Pipe Post.
- I.P. Standard Iron Post.
- P. Wooden Post.
- L.P. Lead Plug.
- O. Denoting "Old"
- WT. Denoting "Witness"
- CIP. Capped Iron Post.
- TH. Traverse Hub.

I, V. BARTELL, a British Columbia
land surveyor, of PRINCE GEORGE
in British Columbia, certify that I was present
at and personally superintended the survey
represented by this plan, and that the survey
and plan are correct. The survey was completed
on the 28 day of August 1981

V. Bartell

Approved under the Land Title Act on
the 3rd day of NOV. 1981

C. E. Obit
Approving Officer
City of Prince George

This Plan lies within the FRASER FORT GEORGE
Regional District

Reapproved Feb 4, 1982
C. E. Obit

Re-Approved
this 20 day of JAN. 1983 C.E.O.

C. E. Obit
Approving Officer
City of Prince George

McWilliam-Whyte-Goble & Associates
B.C. Land Surveyors
Kamloops-Prince George-Salmon Arm-Smithers
FB/P File No. 81184-B

LAKELAND MILLS (1973) INCORPORATION # 115260
LTD.
AUTHORIZED SIGNATORIES

George Kilby

THE ROYAL BANK OF CANADA
AUTHORIZED SIGNATORIES

J. McWilliam

Approved
10/MAY/83
Gen S. Wright

Handwritten note

City of Prince George

140-5758