

PLOTTED KE

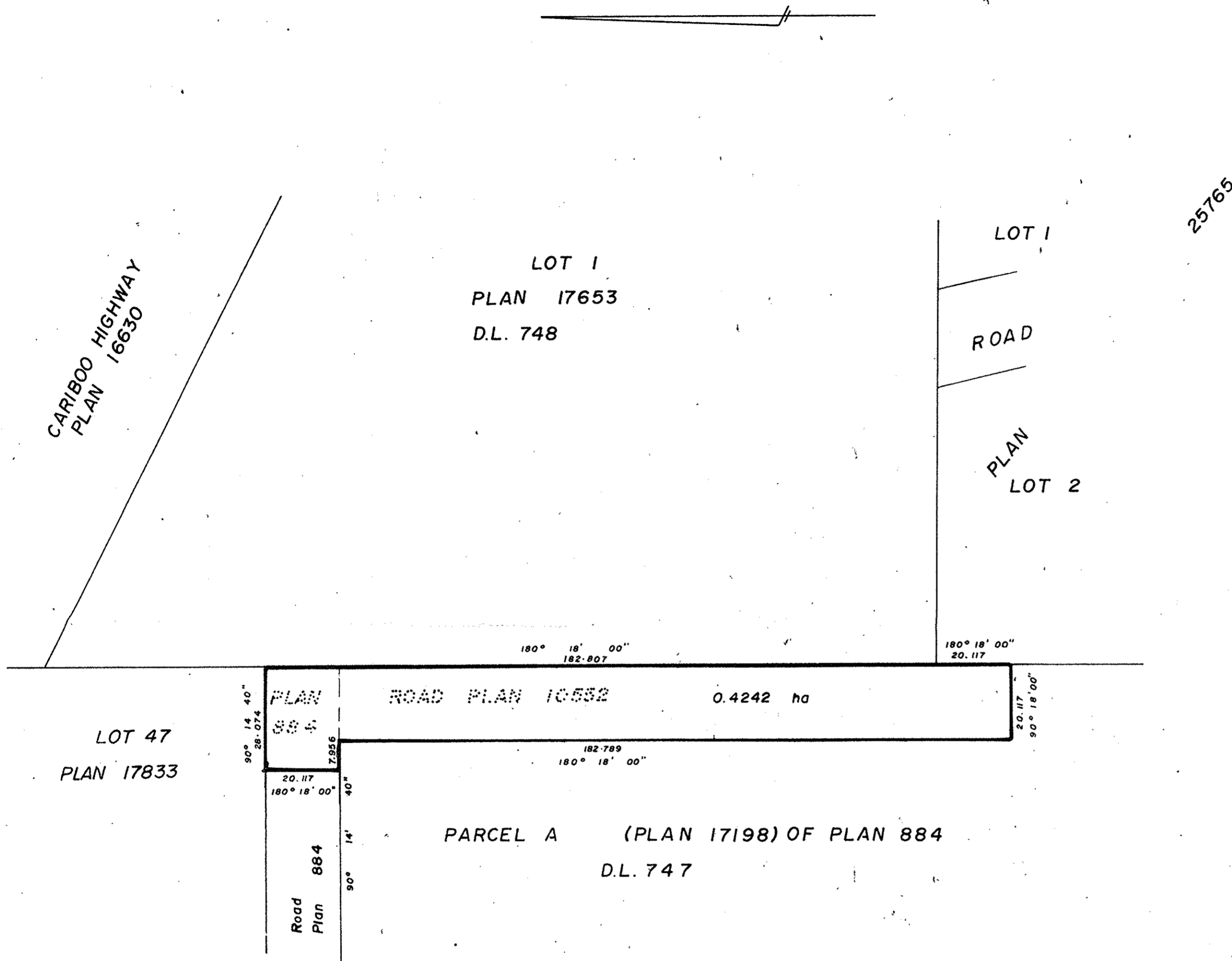
PLAN 29232
Deposited in the Land Title Office
at Prince George, B.C.
on the 25th day of May 1983

E. R.
Registrar

EXPLANATORY PLAN TO ACCOMPANY BY LAW
3835 CITY OF PRINCE GEORGE
CLOSING PART OF ROAD AS SHOWN ON PLAN 884 and
PLAN 10552, ADJOINING PARCEL A (PLAN 17198) OF PLAN
884, D.L. 747, LOT 1 PLAN 17653, LOT 2
PLAN 25765, D.L. 748, LOT 47, PLAN 17833,
D.L. 747, CARIBOO DISTRICT.
Scale: 1:1000 (DISTANCES ARE IN METRES)



CERTIFIED CORRECT
ACCORDING TO LAND TITLE OFFICE RECORDS
this 27th day of August 1981
V. Bartell
V. BARTELL B.C.L.S.



This plan lies within the Fraser Fort George
Regional District.

MC. WILLIAM - WHYTE - GOBLE & ASSOCIATES
B.C. LAND SURVEYORS
Kamloops - Prince George - Salmon Arm - Smithers
FB/P FILE NO. 81184 - A