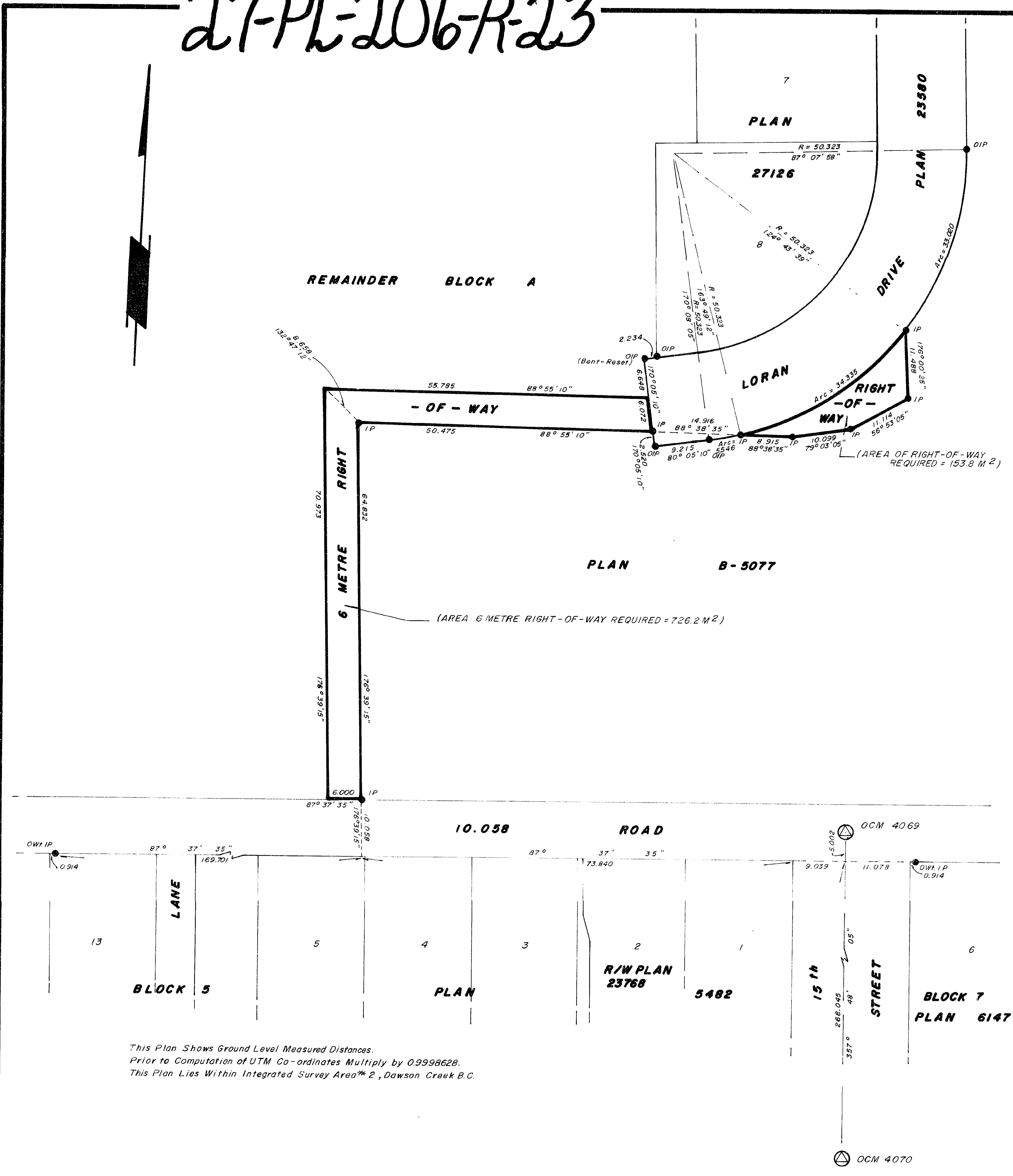


27-PL-206-R-23



PLAN NUMBER 29229
 Deposited in the Land Title Office at Prince George.
 This 20th Day of May 1983 "Egraven" Jek Registrar

NORTHLAND UTILITIES (BC) LIMITED

PLAN OF STATUTORY RIGHT-OF-WAY WITHIN REMAINDER BLOCK A, PLAN B-5077 S.W. 1/4, SECTION 22, TOWNSHIP 78, RANGE 15, W.6M, PEACE RIVER DISTRICT

SCALE: 1:500

LEGEND
 Bearings are Grid Bearings, Derived From Control Monuments 4069 & 4070 and are Referred To 123° West Longitude.

- ⊙ C.M. Denotes Control Monument Set
- I.P. Denotes 1.27cm x 1.27cm x 75cm galvanized iron bar post set.
- C.I.P. Denotes capped iron bar post set.
- P.P. Denotes standard pipe post set.
- ⊙ P.Con. Denotes standard concrete post set.
- Wt. Denotes witness. RP. ... Denotes 152.4cm angle iron reference post set.
- Denotes old post found when prefixed to above symbols.

NOTES: All distances are in metres.
 This plan lies within the Peace River - Liard Regional District.

BOOK OF REFERENCE

PARCEL	AREA	§ DISTANCE
REM. BLOCK A, PLAN B-5077	880.0 M ²	

APPROVAL

AFFIDAVIT
 I, C. N. STABLES, a British Columbia Land Surveyor of the City of Dawson Creek in British Columbia, Certify that I was present at and personally superintended the survey represented by this plan, and that the survey and plan are correct.
 The survey was completed on the 26th day of APRIL 1983.

C. N. STABLES
 C. N. STABLES B.C.L.S.

STABLES, TRYON & ASSOCIATES
 B.C. LAND SURVEYORS DAWSON CREEK, B.C.
 File No. 83-81
 PNG Map 93-P/16-B

This Plan Shows Ground Level Measured Distances.
 Prior to Computation of UTM Co-ordinates Multiply by 0.9998628.
 This Plan Lies Within Integrated Survey Area* 2, Dawson Creek B.C.