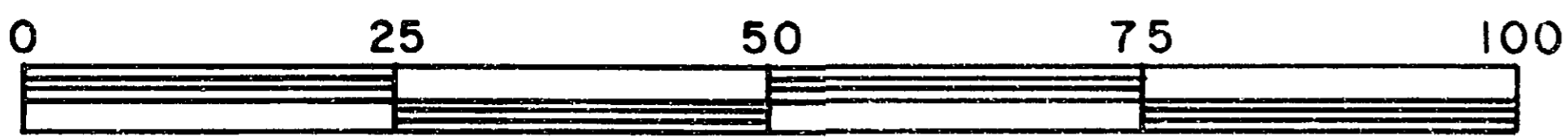


26-FF-226

REFERENCE PLAN OF EASEMENT THROUGH
LOT A, PLAN 29120
DISTRICT LOT 2425
CARIBOO DISTRICT - BRITISH COLUMBIA

SCALE: 1 : 1000



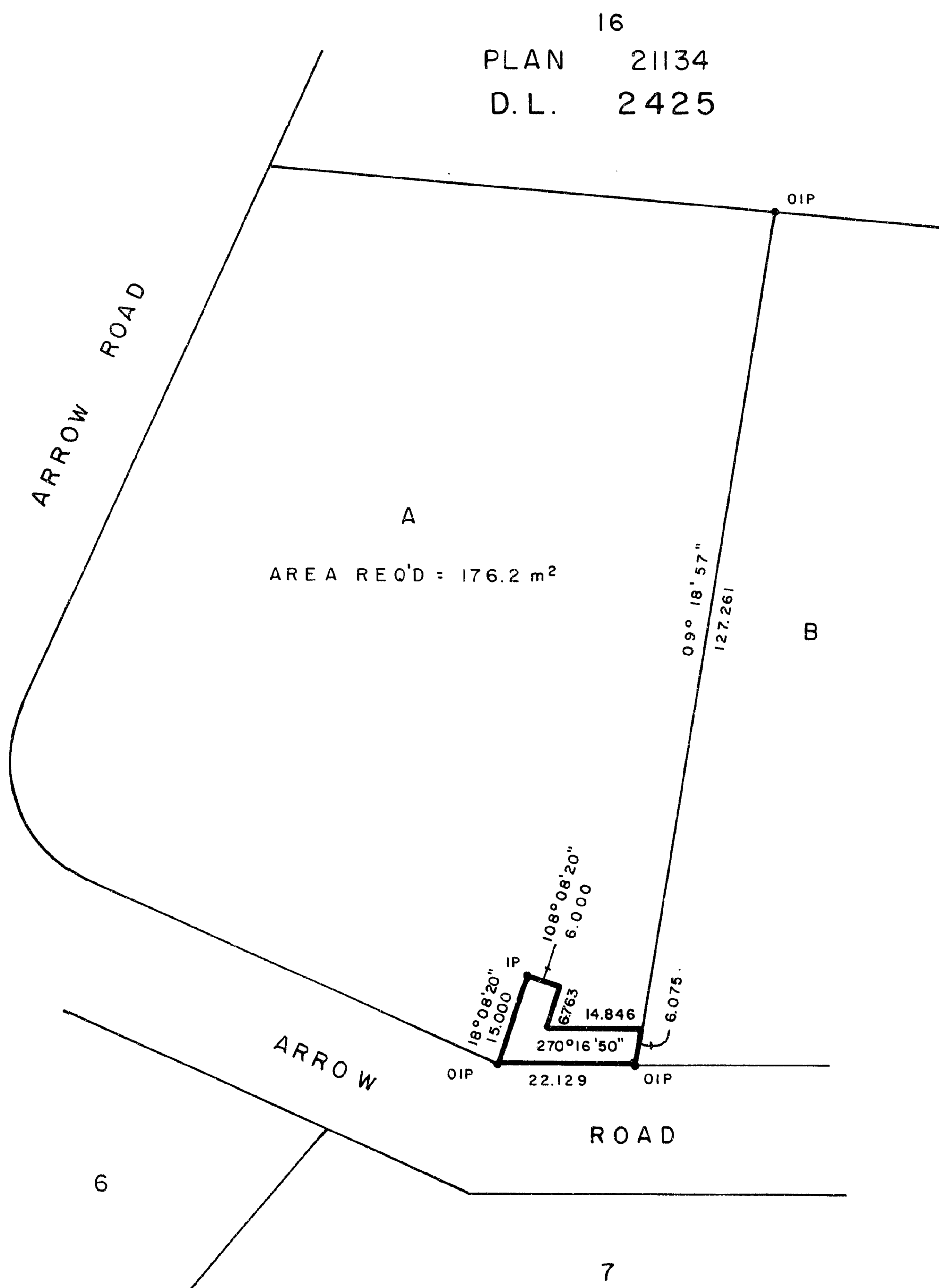
NOTE: Bearings are astronomic, derived from the south boundary of Lot A, Plan 29120

LEGEND: • OIP denotes an old iron pin found.
• IP denotes an iron pin set.

PLAN N^o 29121

Deposited in the Land Title Office at Prince George, B.C. this 15th day of April, 1983.

"E.S. Raven" pr. fo.
Registrar



I, DONALD A. DUFFY, a British Columbia Land Surveyor, of Prince George, in British Columbia, certify that I was present at and did personally superintend the survey represented by this plan, and that the survey and plan are correct. The survey was completed on the 23 day of March, 1983.

This plan lies within the Fraser-Fort George Regional District.

W. D. USHER & ASSOCIATES
LAND SURVEYORS
PRINCE GEORGE - B.C.
P 8 27 13725 A