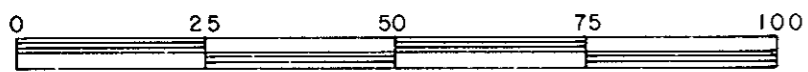


PLAN OF SUBDIVISION OF  
 LOT 15, PLAN 21134  
 DISTRICT LOT 2425  
 CARIBOO DISTRICT—BRITISH COLUMBIA

SCALE: 1 : 1000

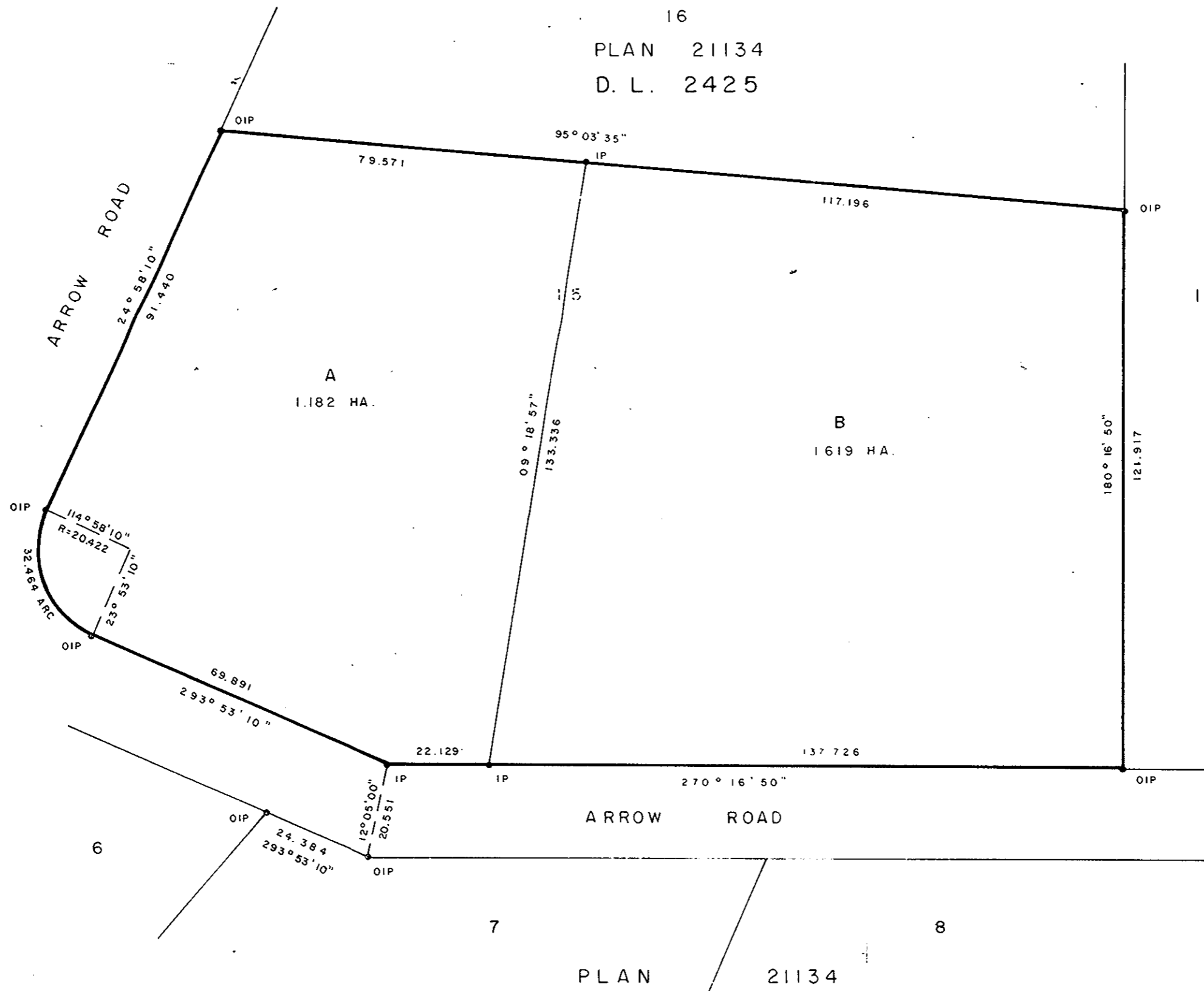


NOTE: Bearings are astronomic, derived from the south boundary of Lot 15, Plan 21134.

LEGEND: • OIP denotes an old iron pin found.  
 • IP denotes an iron pin set.

PLAN No 29120  
 Deposited in the Land Title Office at Prince George, B.C. this 15 day of April, 1983

R.S. P.  
 Registrar



I, DONALD A. DUFFY, a British Columbia Land Surveyor, of Prince George, in British Columbia, certify that I was present at and did personally superintend the survey represented by this plan, and that the survey and plan are correct. The survey was completed on the 23 day of MARCH, 1983.

D. Penner  
 Owner

Dorothy Penner  
 Owner

R. Shier  
 Witness as to both signatures

324 VANCOUVER ST.  
PRINCE GEORGE, B.C.  
SURVEY TECHNOLOGIST

Prince George and District Credit Union

[Signature]  
 Authorized Signatory

[Signature]  
 Authorized Signatory

Approved under the Land Title Act this 5th day of APRIL, 1983

C.E. Ols  
 Approving Officer, City of Prince George

This plan lies within the Fraser-Fort George Regional District.

W.D. USHER & ASSOCIATES  
 LAND SURVEYORS  
 PRINCE GEORGE — B.C.  
 PB 27 13725