

2
PLAN
25241

1
7
8
6
7
7
5
6
PLAN

ANDRES
ROAD

PLAN 9975
5

7867
9

PLAN 10

OIP. 20.117

PLAN 24070
1
2
3

D.L. 8179

A
D.L. 8180

PLAN NO. 29103

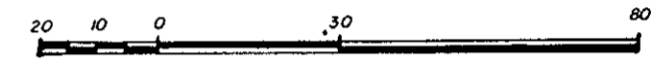
Deposited in the Land Title Office at Prince George
this 8 day of April 1983.

Registrar

FERRY AVENUE

PLAN OF STATUTORY RIGHT-OF-WAY
IN LOT A, PLAN 19988, D.L. 8181
and IN REMAINDER OF EAST 1/2
OF D.L. 8181, CARIBOO DISTRICT.

Scale: 1: 1250; (DISTANCES ARE IN METRES)



LEGEND

Bearings are astronomic derived from Plan 19988 -
South boundary = 90° 13' 46"

- IP..... Standard Iron Post.
- PCOn..... Standard Post in Concrete.
- O..... Denotes "old"
- Wt..... Denotes "witness"

I, Gordon Kilbride, a British Columbia Land Surveyor
of Prince George in British Columbia certify that I
was present at and personally superintended the survey
represented by this plan and that the survey and plan
are correct. The said survey was completed on the
7th day of February, 1983.

Gordon Kilbride
Gordon Kilbride, B.C.L.S.

BOOK OF REFERENCE	
Description	Area
Lot A, Plan 19988	5925 m ²
Rem. E. 1/2 D.L. 8181	7229 m ²

WESTWOOD DRIVE

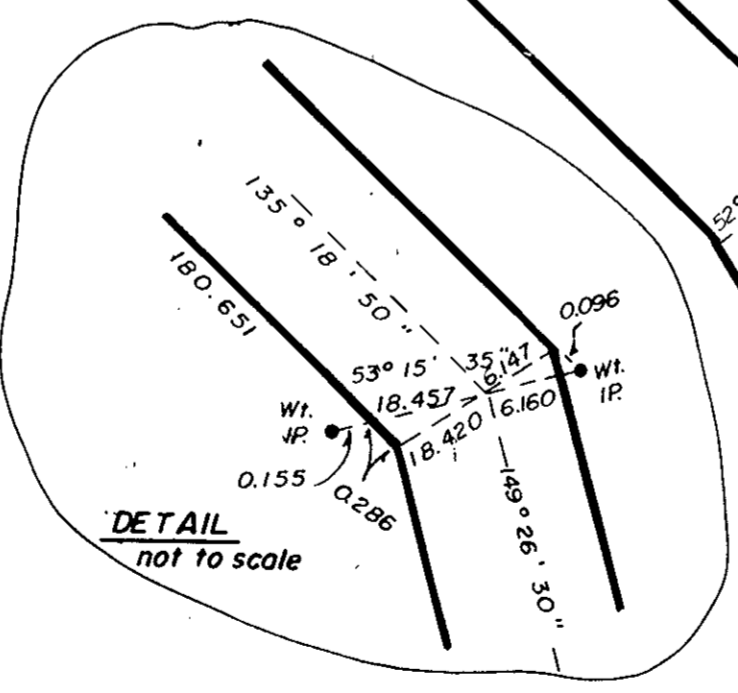
BLOCK C, D.L. 1432

RANGE ROAD

1	PLAN 23648	REM. LOT A PLAN 7975	A PLAN 24357	1	2	3	4	5	6	7	8	1	2	3	4	R/W PLAN 16899
				PLAN 8714								PLAN 9871				

This plan lies within the Fraser Fort George
Regional District.

McWilliam, Whyte, Goble & Associates,
B.C. Land Surveyors,
Prince George, Kamloops, Smithers, Salmon Arm.
REF. NO. 83006 (D.L. 8181)



S1010