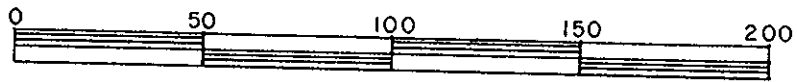


REFERENCE PLAN OF EASEMENT THROUGH  
 REMAINDER OF LOT 6, PLAN 21936  
 DISTRICT LOT 2422  
 CARIBOO DISTRICT— BRITISH COLUMBIA

SCALE: 1 : 2000



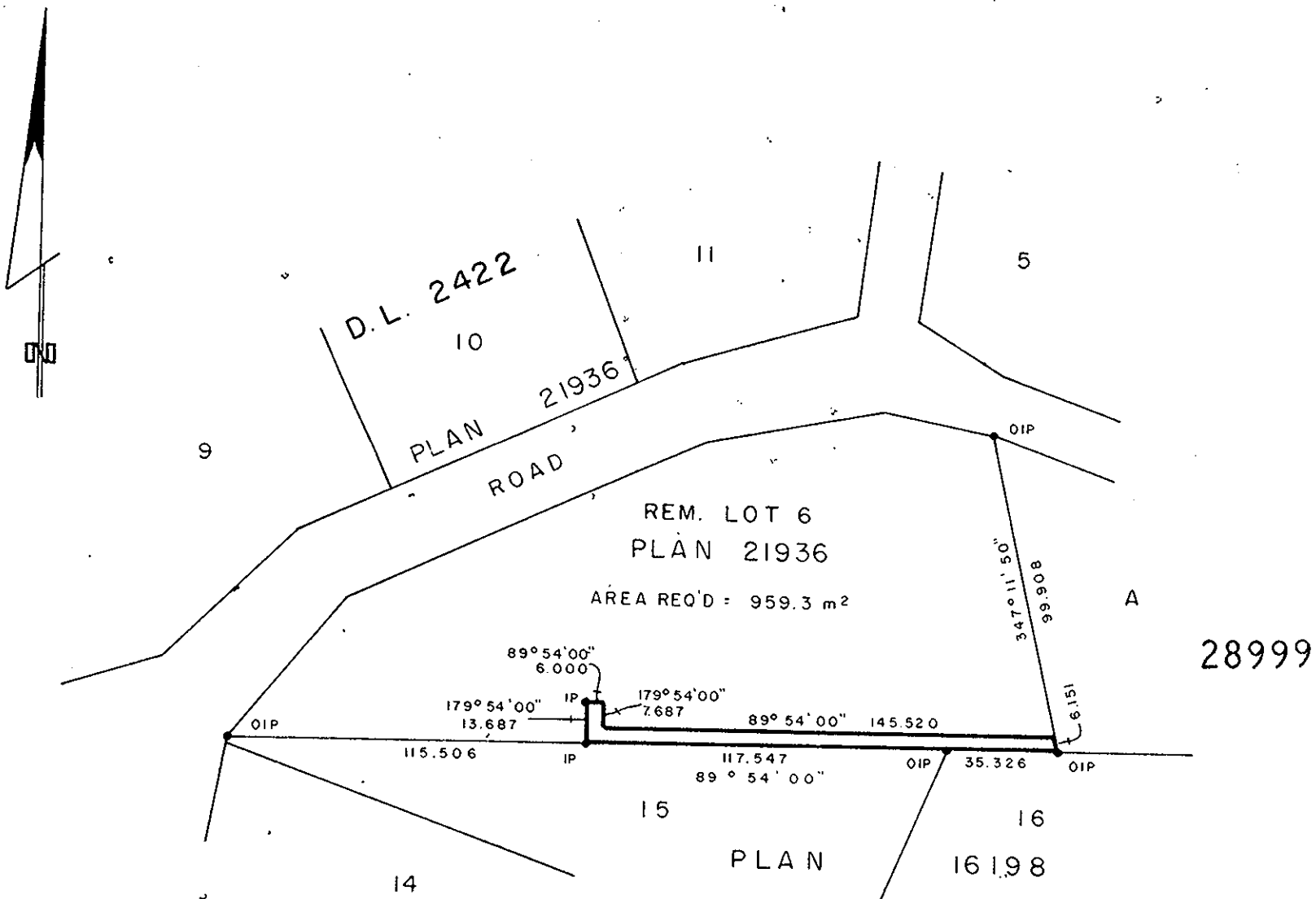
PLAN N<sup>o</sup> 29000

Deposited in the Land Title  
 Office at Prince George, B.C. this  
14 day of Feb., 1983.

NOTE: Bearings are astronomic, derived from the  
 south boundary of Lot 6, Plan 21936.

LEGEND: • OIP denotes an old iron pin found.  
 • IP denotes an iron pin set.

E.S.P.  
 Registrar



I, DONALD A. DUFFY, a British Columbia Land  
 Surveyor, of Prince George, in British Columbia,  
 certify that I was present at and did personally  
 superintend the survey represented by this plan,  
 and that the survey and plan are correct. The  
 survey was completed on the 27 day of JAN.,  
 1983.

This plan lies within the Fraser- Fort George  
 Regional District.

W. D USHER & ASSOCIATES  
 LAND SURVEYORS  
 PRINCE GEORGE — B.C.  
 OT 36 13649 A

31-183(b)