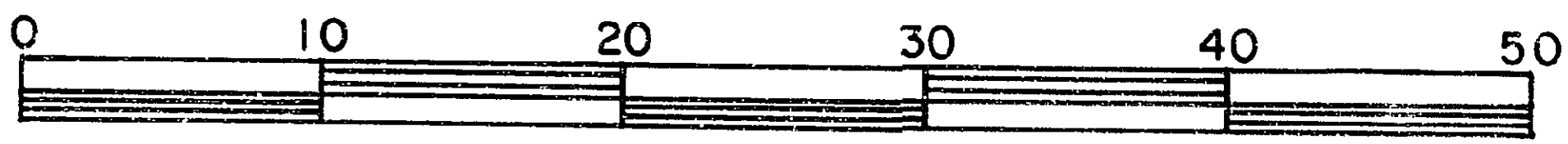


26-FF-226

PLAN OF EASEMENT THROUGH
LOT 1, PLAN 17026
DISTRICT LOT 343
CARIBOO DISTRICT - BRITISH COLUMBIA

SCALE: 1 : 500



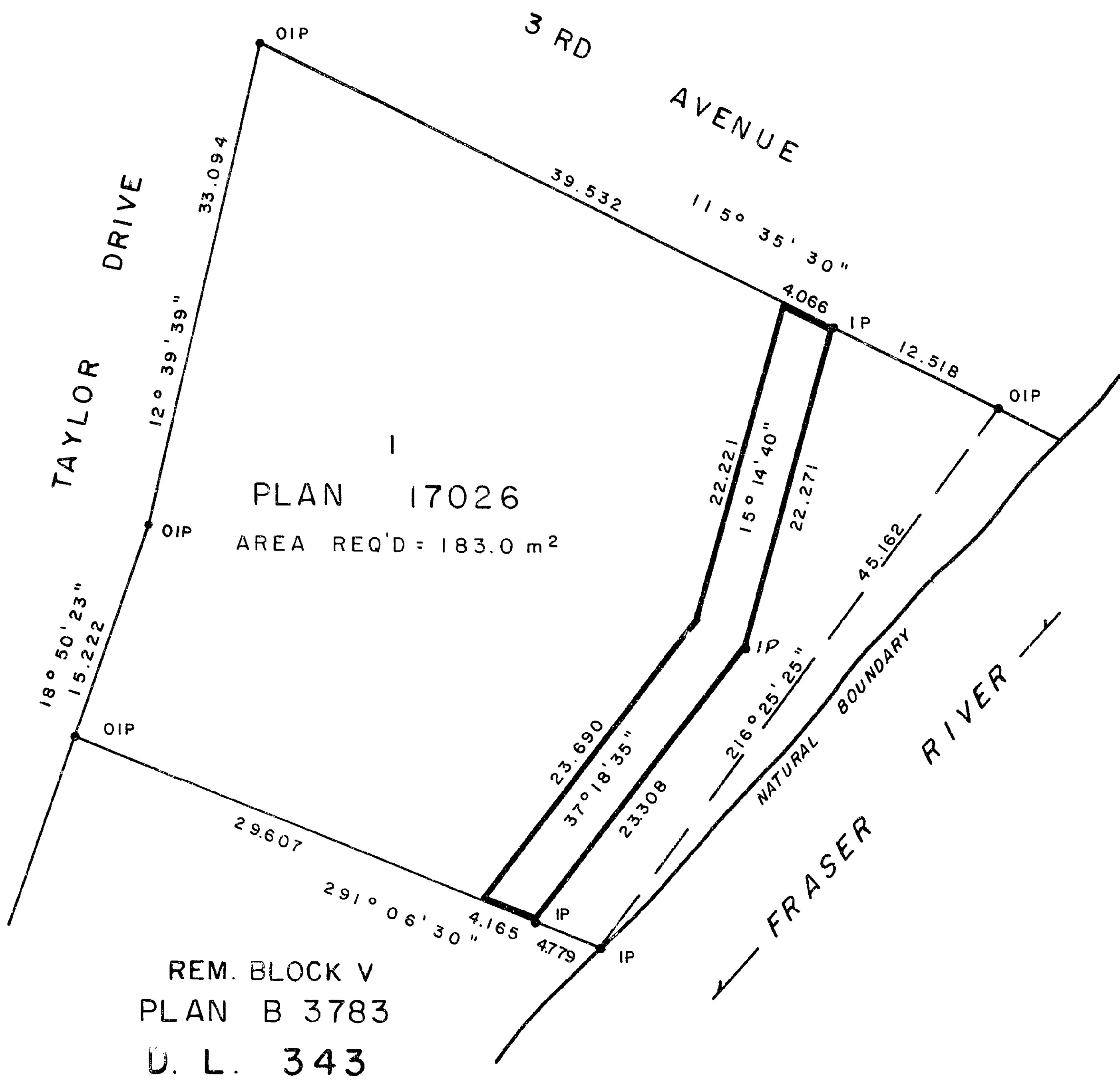
NOTE: Bearings are astronomic, derived from the North boundary of Lot 1, Plan 17026.

LEGEND: • OIP denotes an old iron pin found.
• IP denotes an iron pin set.

PLAN No **28938**

Deposited in the Land Title Office at Prince George, B.C. this 19th day of January, 1983.

"E.J. Raven" per fr.
Registrar



I, DONALD A. DUFFY, a British Columbia Land Surveyor, of Prince George, in British Columbia, certify that I was present at and did personally superintend the survey represented by this plan, and that the survey and plan are correct. The survey was completed on the 4th day of Jan., 1983.

This plan lies within the Fraser-Fort George Regional District.

W. D. USHER & ASSOCIATES
LAND SURVEYORS
PRINCE GEORGE — B.C.
MZ 64 13615