

PLAN OF SUBDIVISION OF PART OF
 REMAINDER OF LOT A, PLAN 22183
 DISTRICT LOT 2424
 CARIBOO DISTRICT - BRITISH COLUMBIA

SCALE: 1 : 500

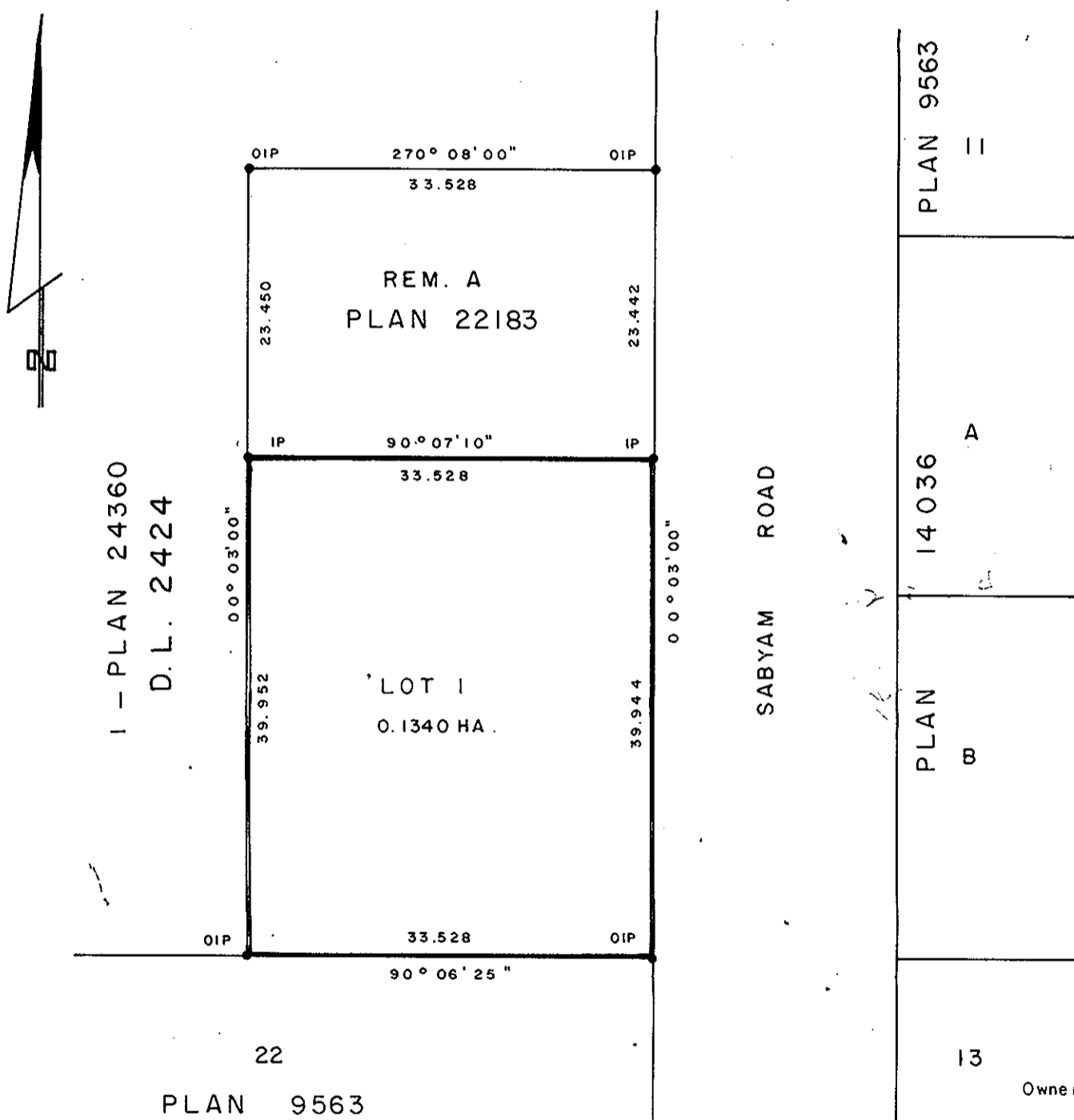


NOTE: Bearings are astronomic, derived from the east boundary of Lot A, Plan 22183 as shown on Plan 24360.

LEGEND: • OIP denotes an old iron pin found.
 • IP denotes an iron pin set.

PLAN No 28929
 Deposited in the Land Title Office at Prince George, B.C. this 14 day of June, 1983

Registrar E. R.



Owner T. Townsend
 Witness D.A. DUFFY

Approved under the Land Title Act this 9th day of DEC, 1982

C. E. Obit
 Approving Officer, City of Prince George

This plan lies within the Fraser-Fort George Regional District.

I, DONALD A. DUFFY, a British Columbia Land Surveyor, of Prince George, in British Columbia, certify that I was present at and did personally superintend the survey represented by this plan, and that the survey and plan are correct. The survey was completed on the 4 day of JUNE, 1982.

[Signature]

PRINCE GEORGE AND DISTRICT CREDIT UNION

Authorized Signatory

Authorized Signatory

W. D. USHER & ASSOCIATES
 LAND SURVEYORS
 PRINCE GEORGE - B.C.
 NT 45 13390