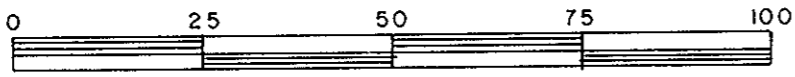


REFERENCE PLAN OF CONSOLIDATION OF
 LOTS 12 TO 16 INCLUSIVE AND
 PARCEL A (054280) OF LOT 17
 BLOCK 193, PLAN 1268
 DISTRICT LOT 343
 CARIBOO DISTRICT - BRITISH COLUMBIA

SCALE: 1 : 1000

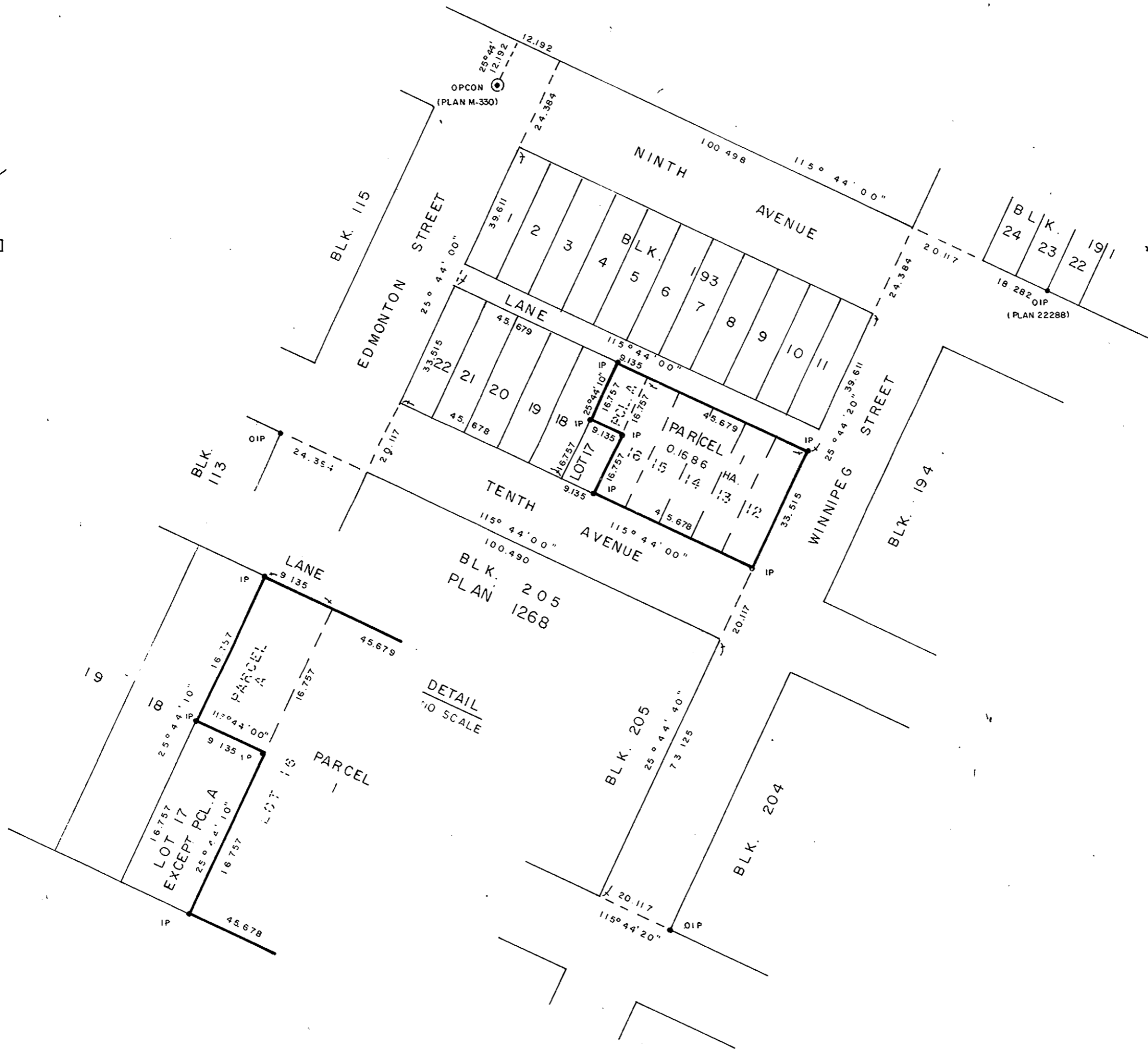


NOTE: Bearings are astronomic, derived from the north boundary of Ninth Avenue as shown on Plan 1268.

LEGEND: ● OPCON denotes an old concrete monument found.
 • OIP denotes an old iron pin found.
 • IP denotes an iron pin set.

PLAN No. 28923
 Deposited in the Land Title Office at Prince George, B.C. this 11 day of Jan, 1983.

E.S.R.
 Registrar



I, DONALD A. DUFFY, a British Columbia Land Surveyor, of Prince George, in British Columbia, certify that I was present at and did personally superintend the survey represented by this plan, and that the survey and plan are correct. The survey was completed on the 9 day of DEC., 1982.

DAL - KAY ENTERPRISES LTD.

Authorized Signatory

Authorized Signatory

WHYTE MASONRY CONSTRUCTION LTD.

Authorized Signatory

Authorized Signatory

Approved under the Land Title Act this _____ day of _____, 19____.

Approving Officer, City of Prince George

This plan lies within the Fraser-Fort George Regional District.

W.D. USHER & ASSOCIATES
 LAND SURVEYORS
 PRINCE GEORGE - B.C.