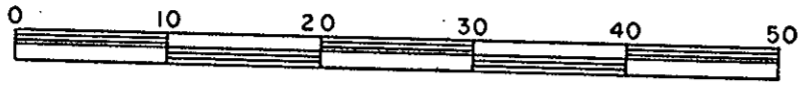


PLAN OF SUBDIVISION OF
 LOT 1, PLAN 8921
 DISTRICT LOT 635
 CARIBOO DISTRICT—BRITISH COLUMBIA

SCALE: 1 : 500



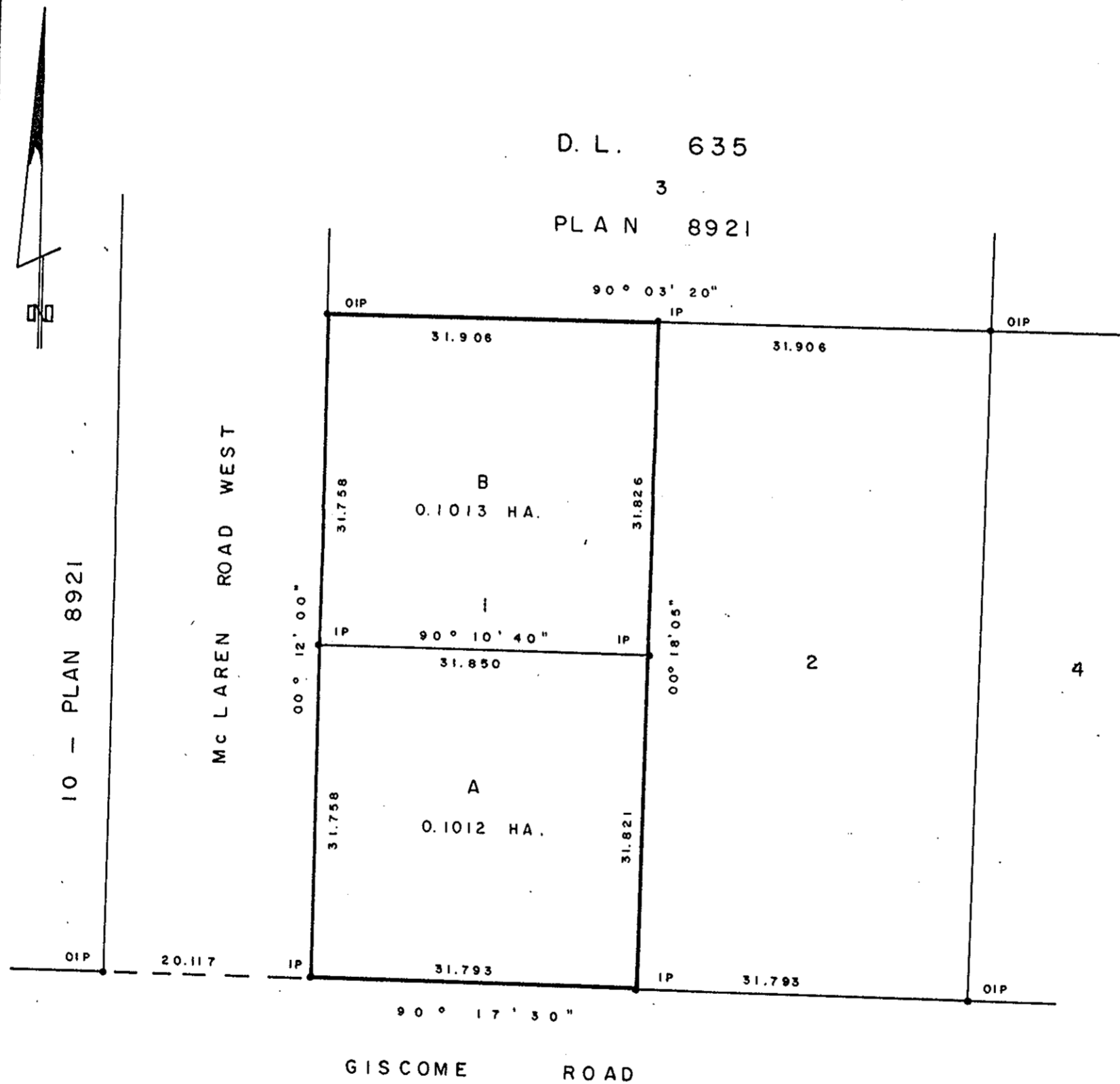
NOTE: Bearings are astronomic, derived from the south boundary of Lot 1, Plan 8921.

LEGEND: • OIP denotes an old iron pin found.
 • IP denotes an iron pin set.

(OK) PLOTTED

PLAN No 28901
 Deposited in the Land Title Office at Prince George, B.C. this 24 day of Dec, 1982.

E. J. T.
 Registrar



I, DONALD A. DUFFY, a British Columbia Land Surveyor, of Prince George, in British Columbia, certify that I was present at and did personally superintend the survey represented by this plan, and that the survey and plan are correct. The survey was completed on the 1 day of Oct, 1982.

[Signature]

BLUE RIDGE PROPERTIES LTD.

[Signature]
 Authorized Signatory

 Authorized Signatory

Approved under the Land Title Act this 9th day of Dec, 1982

[Signature]
 Approving Officer, Ministry of Transportation and Highways.

This plan lies within the Fraser-Fort George Regional District.

W. D. USHER & ASSOCIATES
 LAND SURVEYORS
 PRINCE GEORGE — B.C.
 01 41 13384