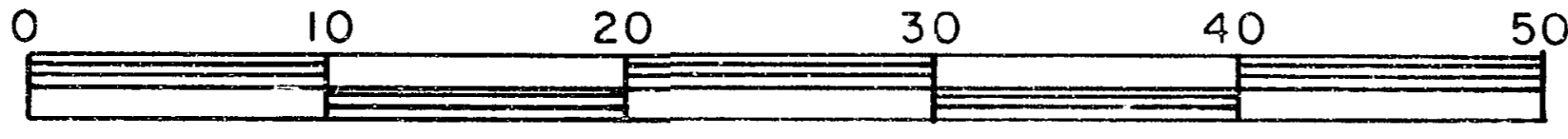


26-FF-226

PLAN OF STATUTORY RIGHT-OF-WAY
FOR MUNICIPAL PURPOSES THROUGH REMAINDER OF
LOT A, PLAN 16588
DISTRICT LOT 4047
CARIBOO DISTRICT—BRITISH COLUMBIA

SCALE: 1 : 500



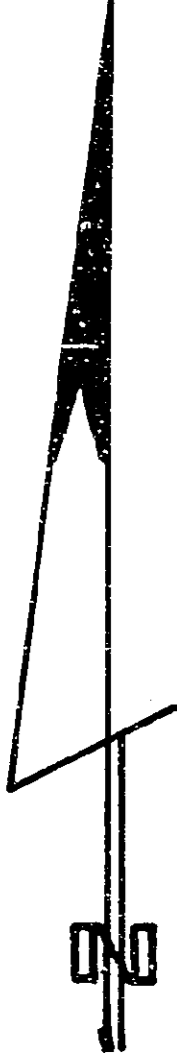
NOTE: Bearings are astronomic, derived from the
southwesterly boundary of R/W Plan 28850.

LEGEND: •OIP denotes an old iron pin found.
•IP denotes an iron pin set.

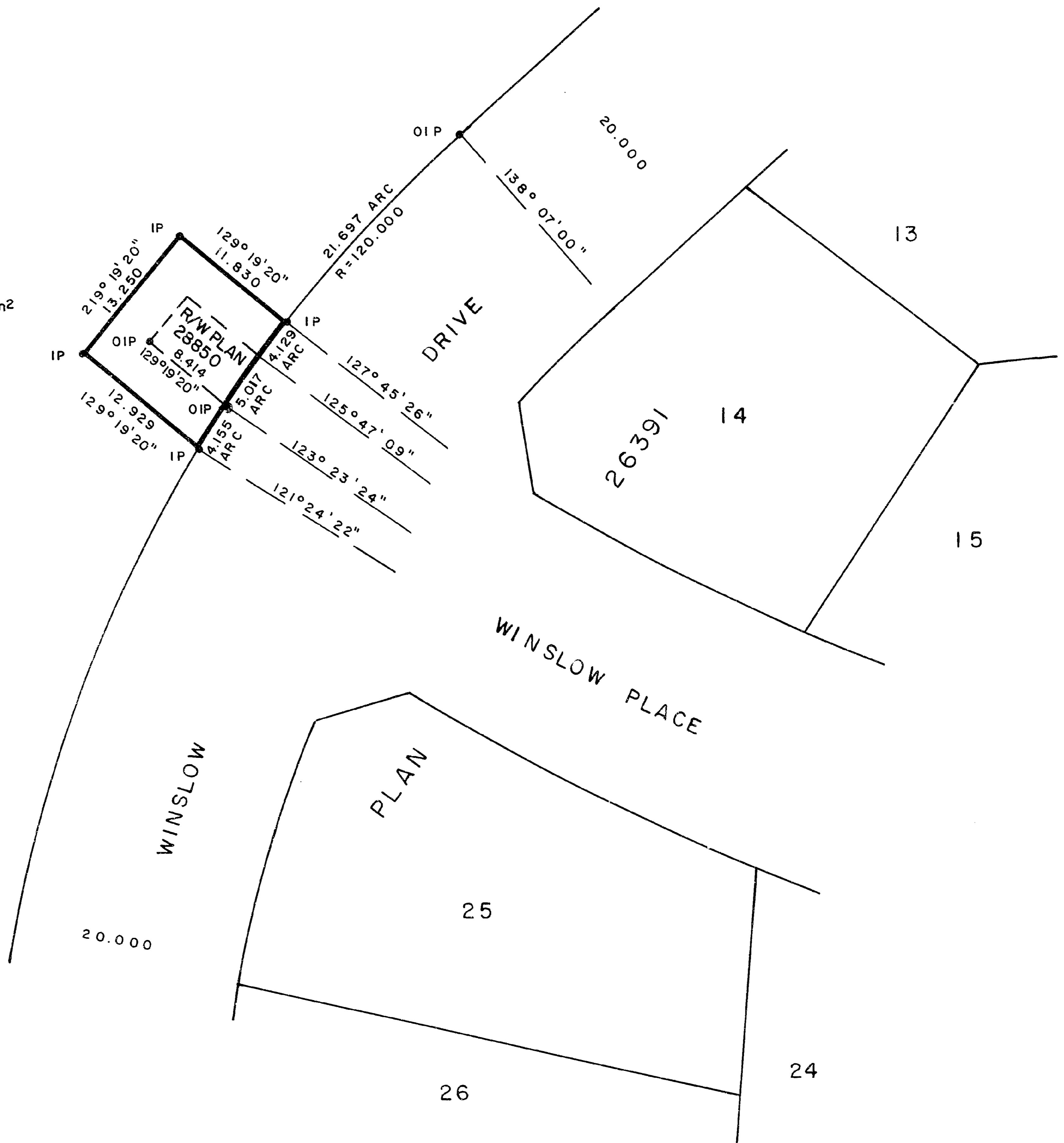
PLAN No **28898**

Deposited in the Land Title
Office at Prince George, B.C. this
23rd day of Dec., 1982.

E.J. Raven per: fg
Registrar



A
PLAN 16588
AREA REQ'D = 162.4 m²
D.L. 4047



I, DONALD A. DUFFY, a British Columbia Land
Surveyor, of Prince George, in British Columbia,
certify that I was present at and did personally
superintend the survey represented by this plan,
and that the survey and plan are correct. The
survey was completed on the 13 day of DEC.,
1982.

This plan lies within the Fraser- Fort George
Regional District.

W. D. USHER & ASSOCIATES
LAND SURVEYORS
PRINCE GEORGE — B.C.
M 2 59 13565 A