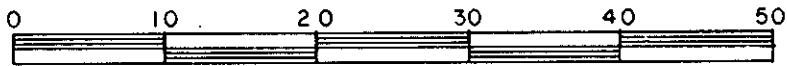


PLAN OF SUBDIVISION OF PART OF
 LOT 3, PLAN 15238
 DISTRICT LOT 633
 CARIBOO DISTRICT — BRITISH COLUMBIA
 SCALE: 1 : 500



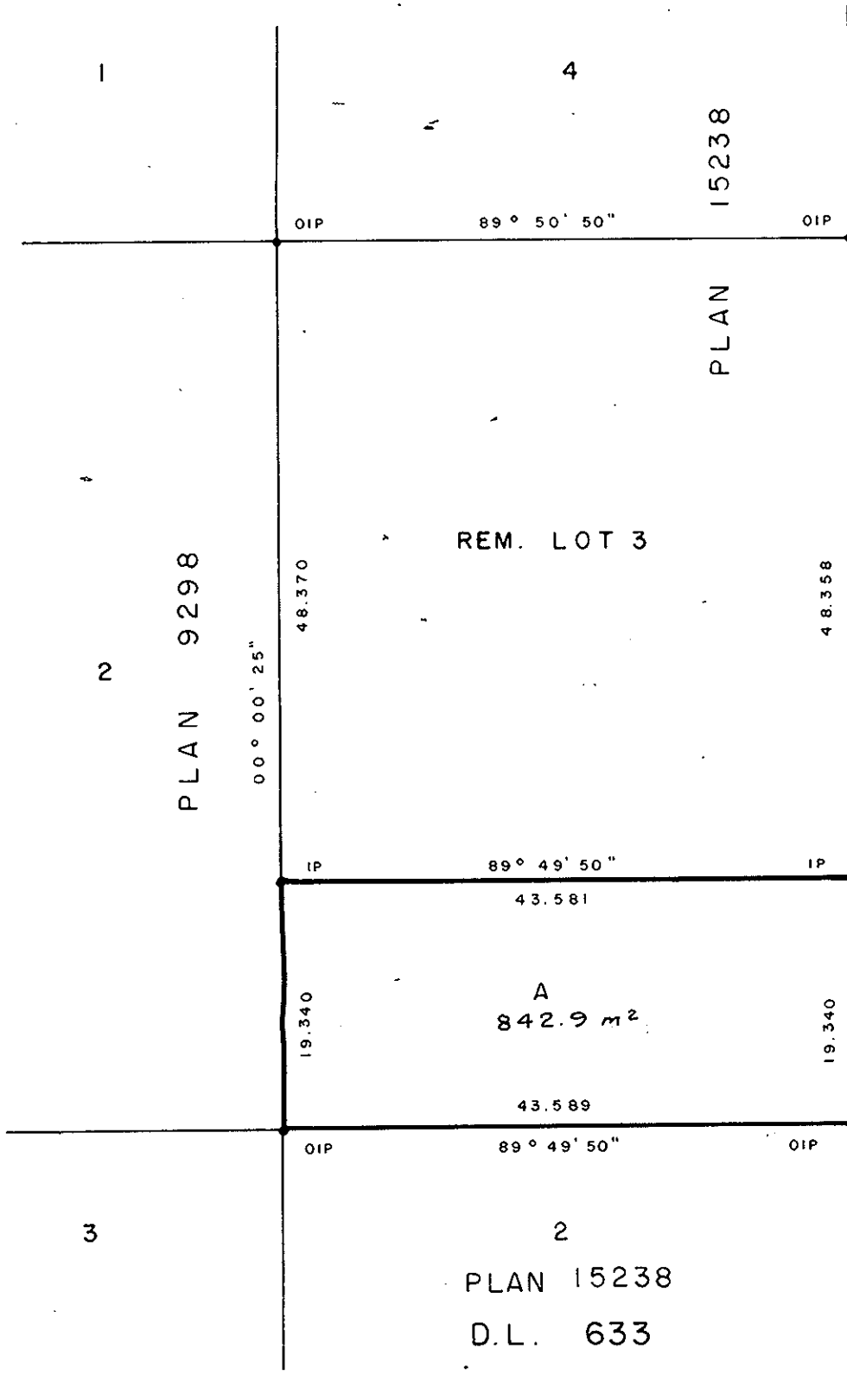
NOTE: Bearings are astronomic, derived from the east boundary of Lot 3, Plan 15238.

LEGEND: • OIP denotes an old iron pin found.
 • IP denotes an iron pin set.

PLAN N^o _____

Deposited in the Land Title Office at Prince George, B.C. this 17 day of December, 1982.

E.J. RAVEN
 Registrar



Owner Brigitte Rittner

Witness D.A. DUFFY

Approved under the Land Title Act this 17 day of Nov., 1982

C. E. Olt
 Approving Officer, City of Prince George

This plan lies within the Fraser- Fort George Regional District.

I, DONALD A. DUFFY, a British Columbia Land Surveyor, of Prince George, in British Columbia, certify that I was present at and did personally superintend the survey represented by this plan, and that the survey and plan are correct. The survey was completed on the 8 day of NOV., 1982.

[Signature]

CATHOLIC CREDIT UNION OF
 PRINCE GEORGE

Authorized Signatory

Authorized Signatory

W. D. USHER & ASSOCIATES
 LAND SURVEYORS
 PRINCE GEORGE — B.C.
 M2 45 12798