

26-226-FF

PLAN NO. 28878

Deposited at the Land Title Office Office
in Prince George this 15th day of
December 1982.

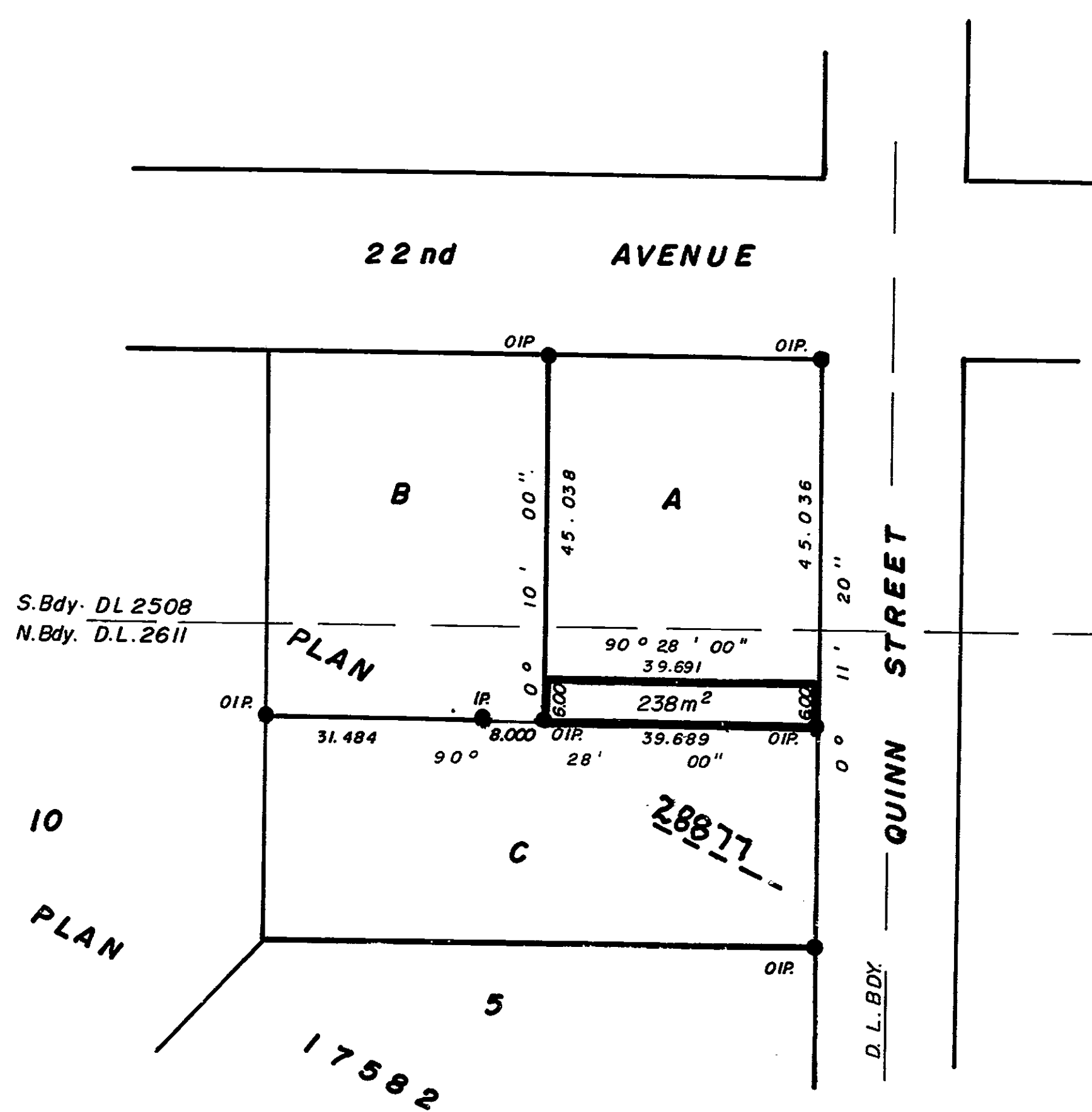
REFERENCE PLAN OF EASEMENT IN LOT A, PLAN 28877, D.L. 2611, CARIBOO DISTRICT.

SCALE: 1:1000



ALL DISTANCES ARE IN METRES

"F. J. Rowan" per f.
Registrar



Bearings are astronomic and are derived
from Plan 28877

- IP.....Standard Iron Post.
-Denotes "old"

I, V. Bartell, a British Columbia land
surveyor of Prince George in British
Columbia, certify that I was present at and
personally superintended the survey repre-
sented by this plan and that the survey
and plan are correct. The survey was
completed on the 27 day of September
1982.

Victor Bartell
V. Bartell, B.C.L.S.

BOOK OF REFERENCE	
Description	Area
LOT A, PLAN 28877,	238 m ²

This plan lies within the Fraser Fort George
Regional District.

McWilliam, Whyte, Goble & Associates,
B.C. Land Surveyors,
Prince George Kamloops Smithers Salmon Arm

REF. NO. 82112 R/W (D.L. 2611)