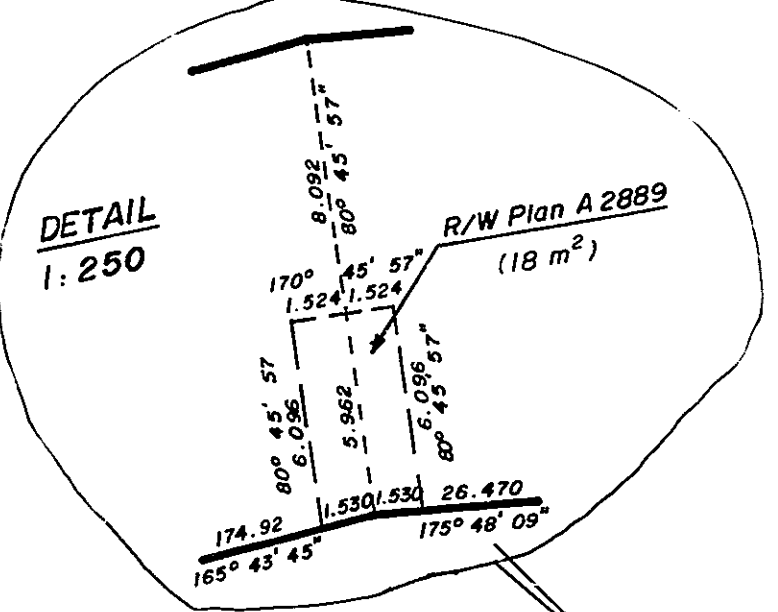
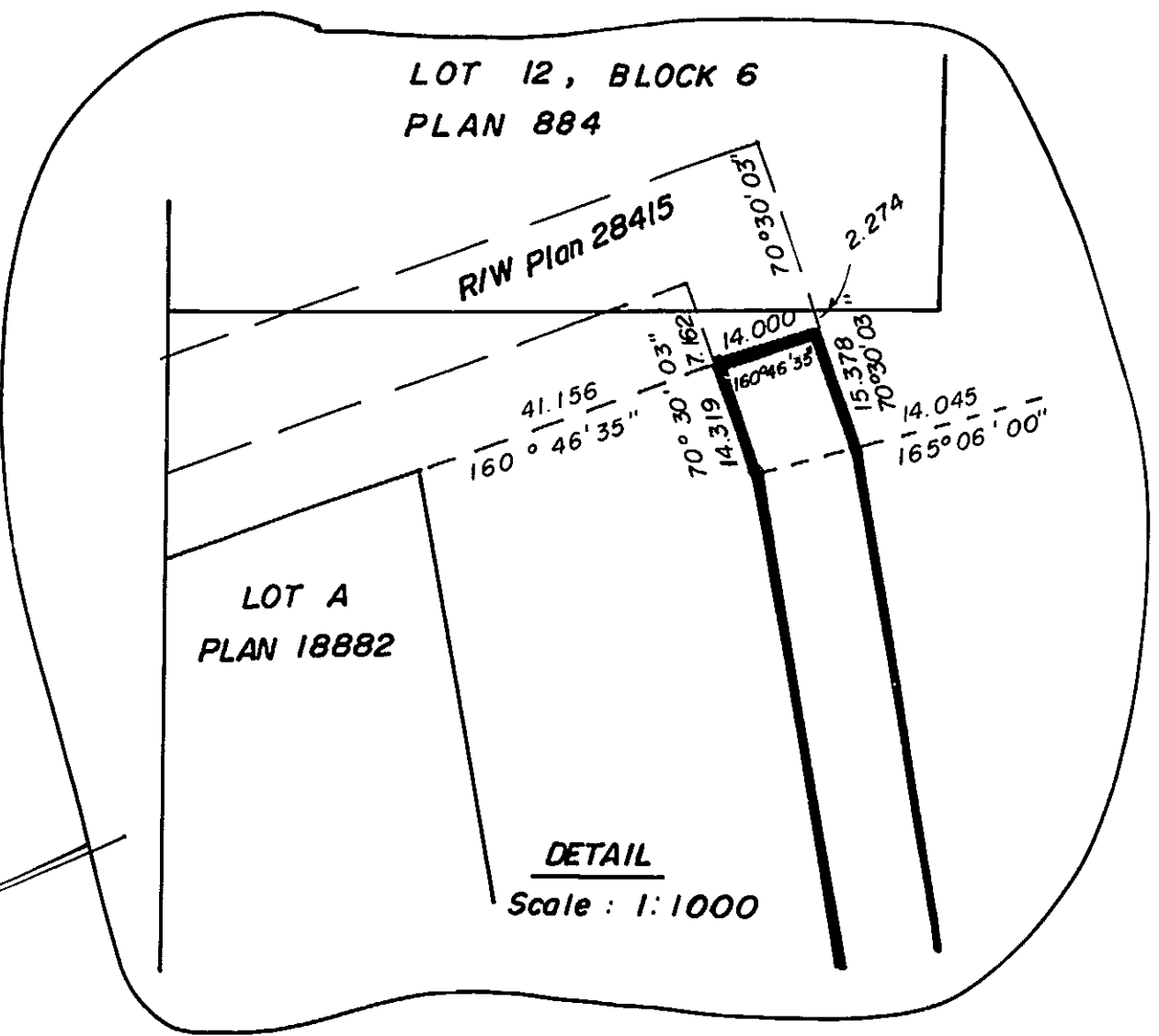
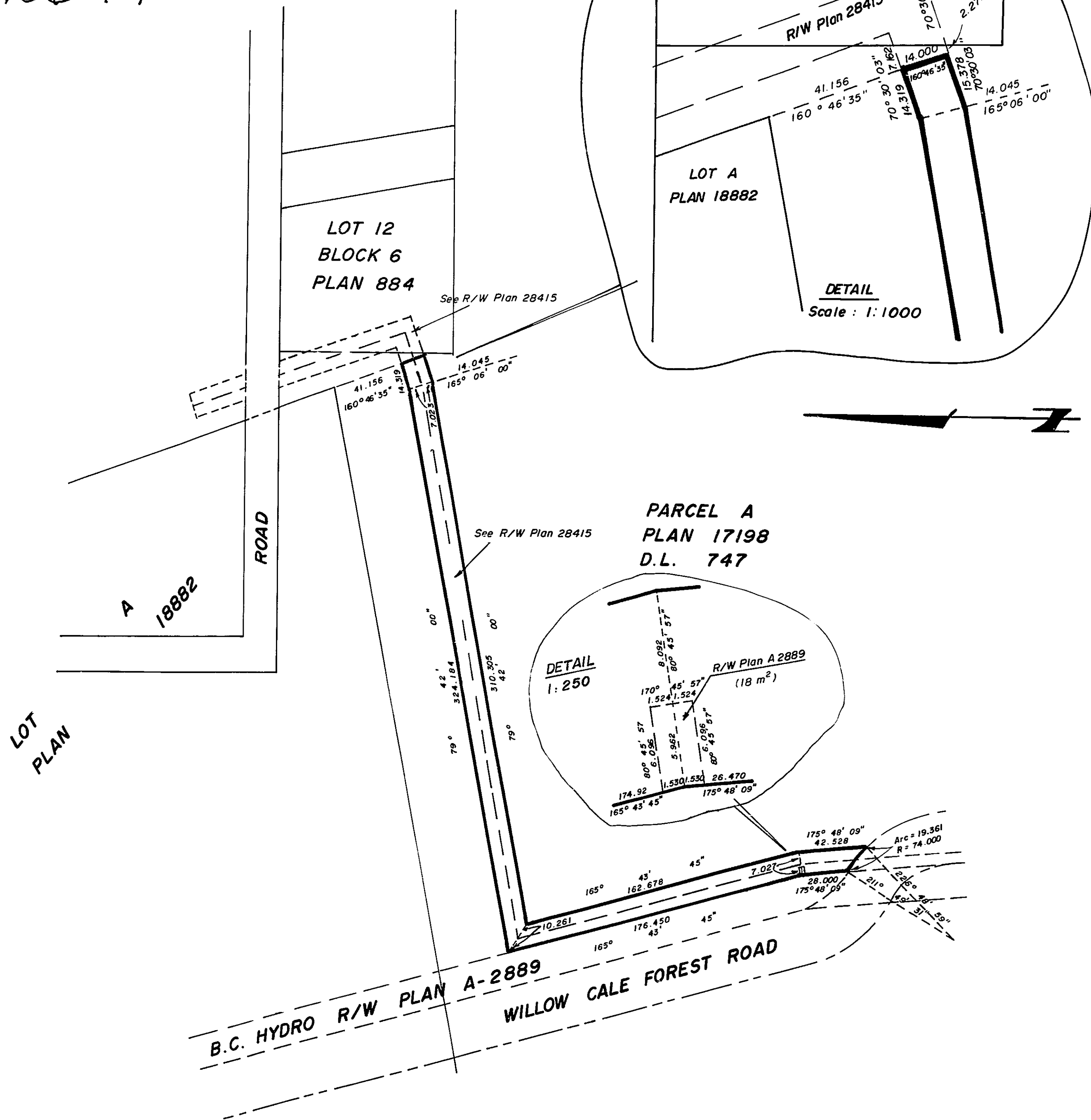


26-FF



**PLAN NO. 28871**

Deposited at the Land Title Office this 9<sup>th</sup> day of October 1982.

*Ef. Bore*  
Registrar



**CITY OF PRINCE GEORGE**

**EXPLANATORY PLAN OF STATUTORY RIGHT OF WAY IN PARCEL A (PLAN 17198) OF PLAN 884 OF D.L. 747, CARIBOO DISTRICT.**

SCALE 1:2000 (Distances are in meters)



CERTIFIED CORRECT  
ACCORDING TO PLAN 28415  
THIS 8<sup>th</sup> DAY OF October 1982.

*Victor Bartell*  
V. BARTELL, B.C.L.S.

BOOK OF REFERENCE	
DESCRIPTION	AREA
Parcel A (Plan 17198)	7509 m <sup>2</sup>

THIS PLAN LIES WITHIN THE FRASER FORT GEORGE REGIONAL DISTRICT.

McWilliam, Whyte, Goble & Associates,  
B.C. Land Surveyors,  
Prince George Kamloops Smithers Salmon Arm

REF. 82062-1