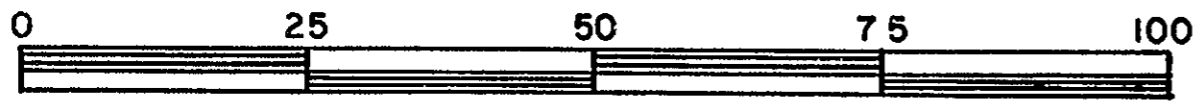


REFERENCE PLAN OF EASEMENT THROUGH
LOT C, PLAN 28868
DISTRICT LOT 4031
CARIBOO DISTRICT — BRITISH COLUMBIA

26-FF

SCALE: 1 : 1000



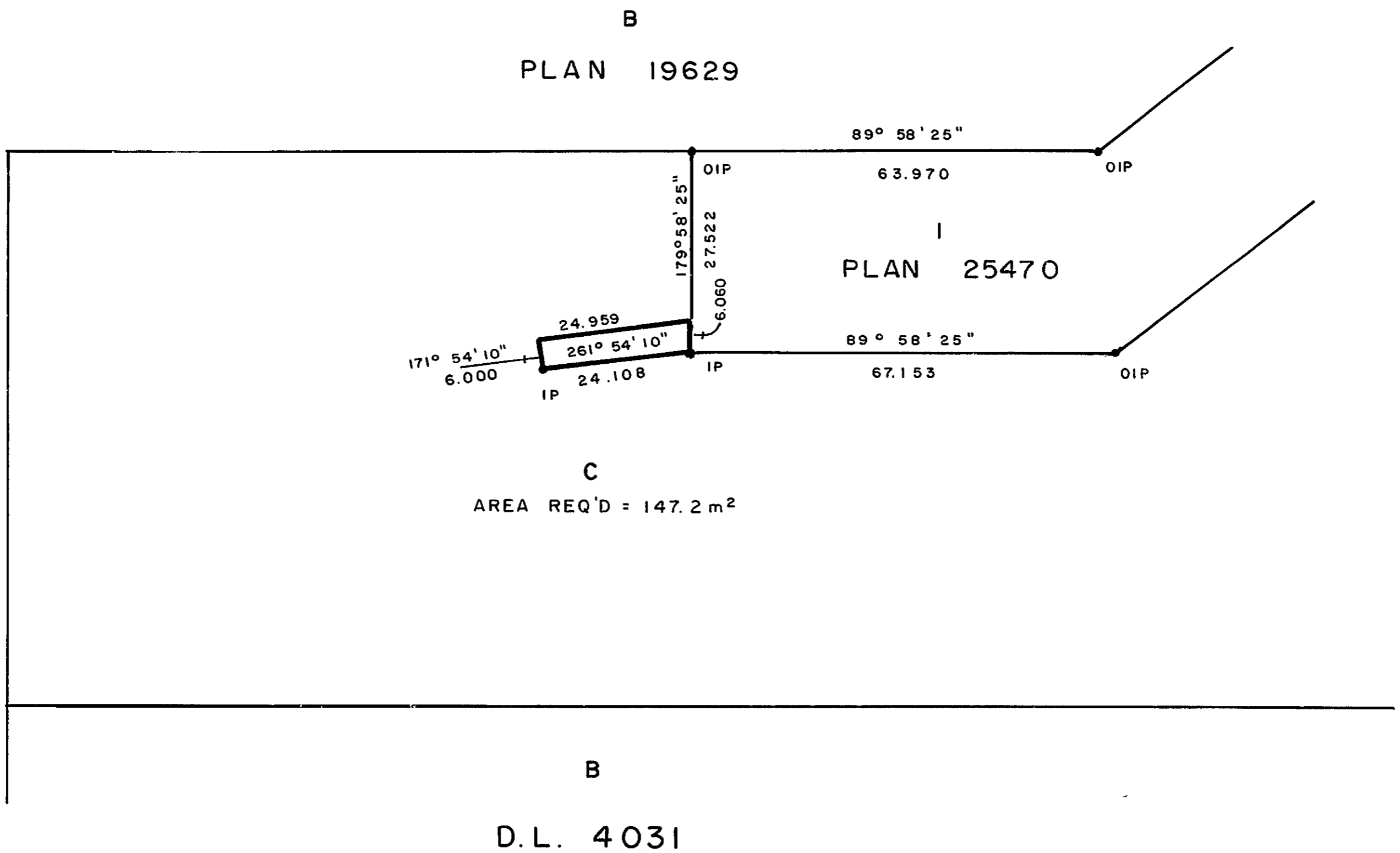
NOTE: Bearings are astronomic, derived from the north boundary of Lot 1, Plan 25470.

LEGEND: • OIP denotes an old iron pin found.
• IP denotes an iron pin set.

PLAN No 28869

Deposited in the Land Title Office at Prince George, B.C. this 9th day of Dec., 1982.

Registrar *E. J. Ross*



I, DONALD A. DUFFY, a British Columbia Land Surveyor, of Prince George, in British Columbia, certify that I was present at and did personally superintend the survey represented by this plan, and that the survey and plan are correct. The survey was completed on the 30th day of October, 1982.

[Handwritten signature]

This plan lies within the Fraser- Fort George Regional District.

W. D. USHER & ASSOCIATES
LAND SURVEYORS
PRINCE GEORGE — B.C.