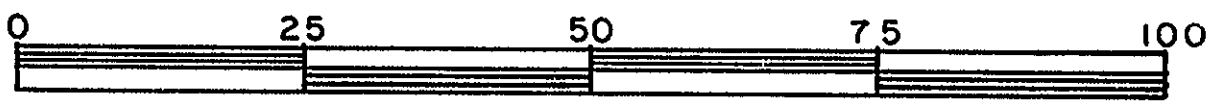


26-226-FF

REFERENCE PLAN OF EASEMENT THROUGH
LOT A - PLAN 28656
DISTRICT LOT 2507
CARIBOO DISTRICT - BRITISH COLUMBIA
SCALE: 1 : 1000

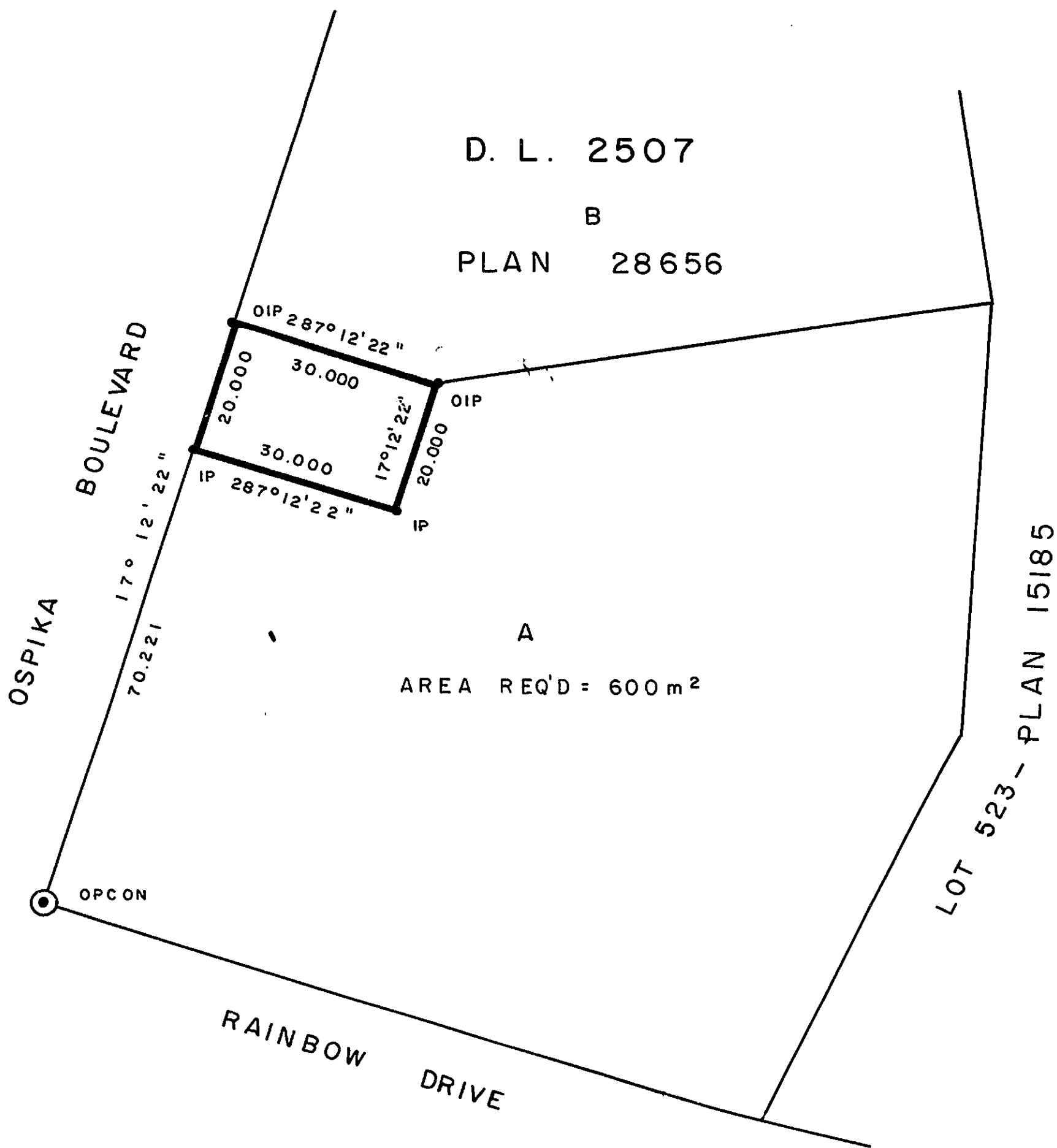


PLAN N^o 28852
Deposited in the Land Title
Office at Prince George, B.C. this
3rd day of Dec, 1982.

NOTE: Bearings are astronomic, derived from the
west boundary of Lot A, Plan 28656.

LEGEND: ● OPCON denotes an old concrete monument found.
• OIP denotes an old iron pin found.
• IP denotes an iron pin set.

Registrar E. J. R. [Signature]



I, DONALD A. DUFFY, a British Columbia Land
Surveyor, of Prince George, in British Columbia,
certify that I was present at and did personally
superintend the survey represented by this plan,
and that the survey and plan are correct. The
survey was completed on the 23 day of SEPT,
1982.

[Signature]

This plan lies within the Fraser- Fort George
Regional District.

W. D. USHER & ASSOCIATES
LAND SURVEYORS
PRINCE GEORGE - B.C.