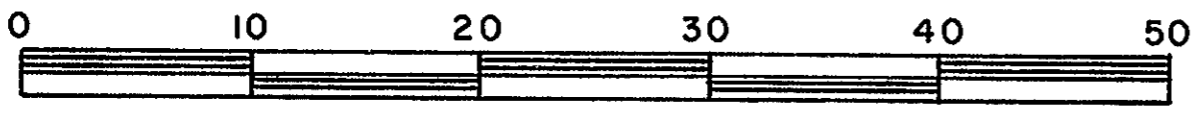


26-226-FF-50

PLAN OF STATUTORY RIGHT-OF-WAY
FOR MUNICIPAL PURPOSES THROUGH REMAINDER OF
LOT A, PLAN 16588
DISTRICT LOT 4047
CARIBOO DISTRICT - BRITISH COLUMBIA

SCALE: 1 : 500



NOTE: Bearings are astronomic, derived from the northwesterly boundary of Winslow Drive, Plan 26391.

LEGEND: • OIP denotes an old iron pin found.
• IP denotes an iron pin set.

PLAN No 28850

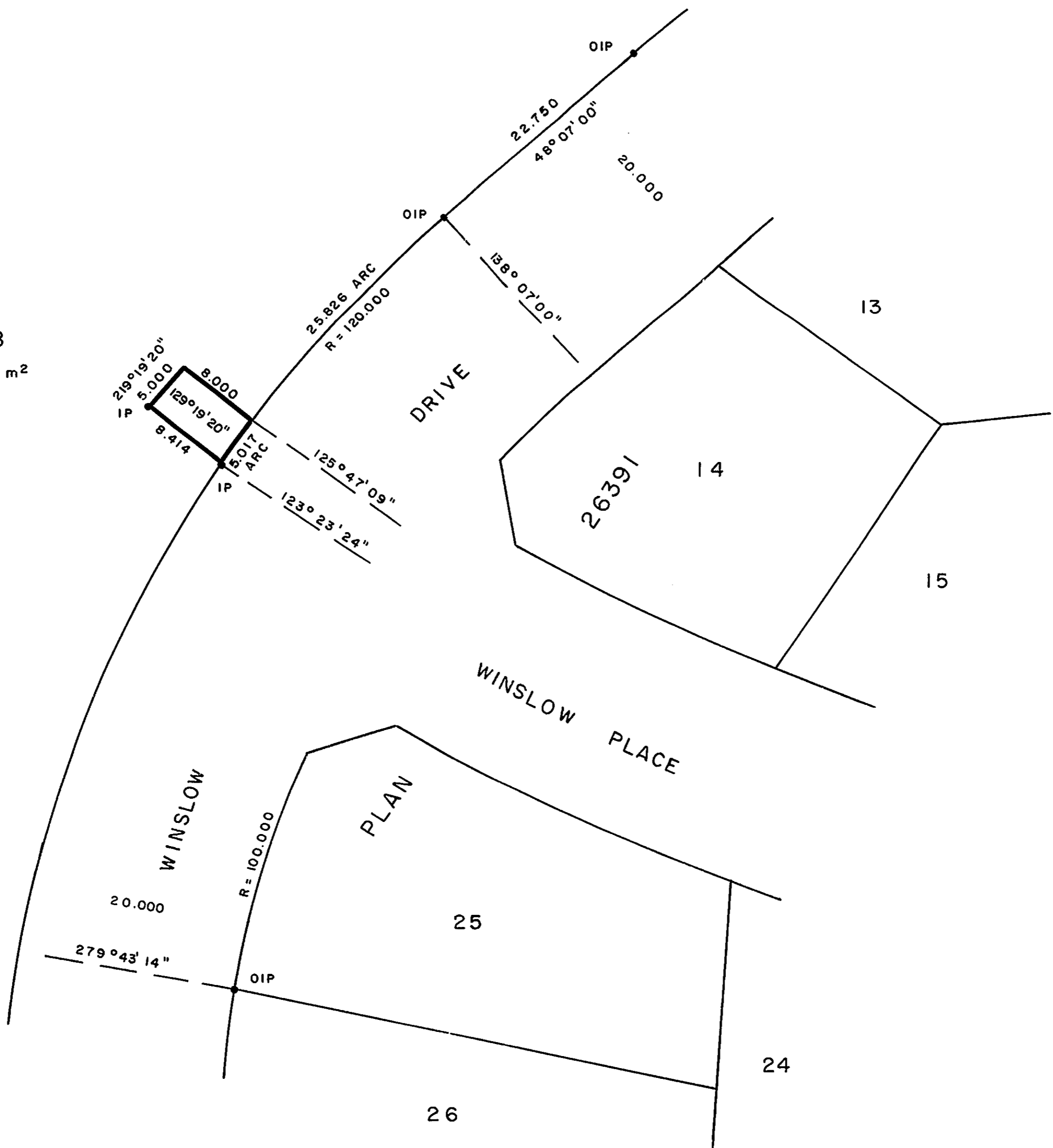
Deposited in the Land Title Office at Prince George, B.C. this 3. day of November, 1982.

E. J. RAVEN
Registrar

per: G.



A
PLAN 16588
AREA REQ'D = 40.95 m²
D.L. 4047



I, DONALD A. DUFFY, a British Columbia Land Surveyor, of Prince George, in British Columbia, certify that I was present at and did personally superintend the survey represented by this plan, and that the survey and plan are correct. The survey was completed on the 24th day of Nov., 1982.

This plan lies within the Fraser- Fort George Regional District.

W. D. USHER & ASSOCIATES
LAND SURVEYORS
PRINCE GEORGE - B.C.
M Z 57 13565