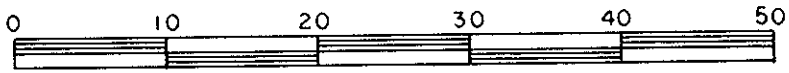


PLAN OF SUBDIVISION OF
 LOT 16, PLAN 25470
 DISTRICT LOT 8174
 CARIBOO DISTRICT—BRITISH COLUMBIA
 SCALE: 1 : 500



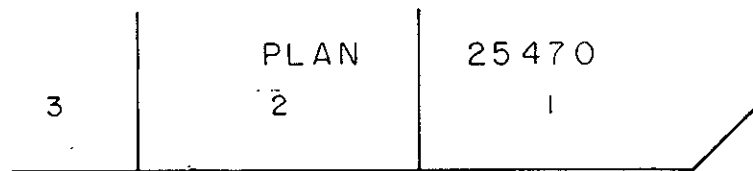
NOTE: Bearings are astronomic, derived from the west boundary of Lot 16, Plan 25470.

LEGEND: • OIP denotes an old iron pin found.
 • IP denotes an iron pin set.

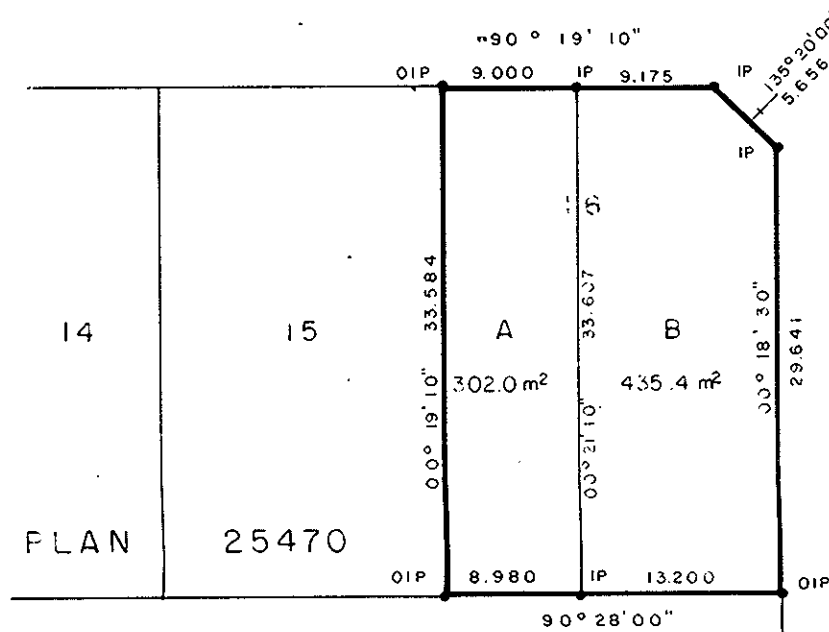
PLAN N^o 28815

Deposited in the Land Title Office at Prince George, B.C. this 18th day of Nov., 1992.

 Registrar



HESSE PLACE



OSPIKA BOULEVARD

D. L. 8174

I, DONALD A DUFFY, a British Columbia Land Surveyor, of Prince George, in British Columbia, certify that I was present at and did personally superintend the survey represented by this plan, and that the survey and plan are correct. The survey was completed on the 12 day of OCT., 1992.

Owner Sage Wood

Witness [Signature]

D.A. DUFFY

Approved under the Land Title Act this 19 day of OCT., 1992

C. E. Abt
 Approving Officer, City of Prince George

This plan lies within the Fraser- Fort George Regional District

W. D. USHER & ASSOCIATES
 LAND SURVEYORS
 PRINCE GEORGE — B.C.
 01 43 13342