

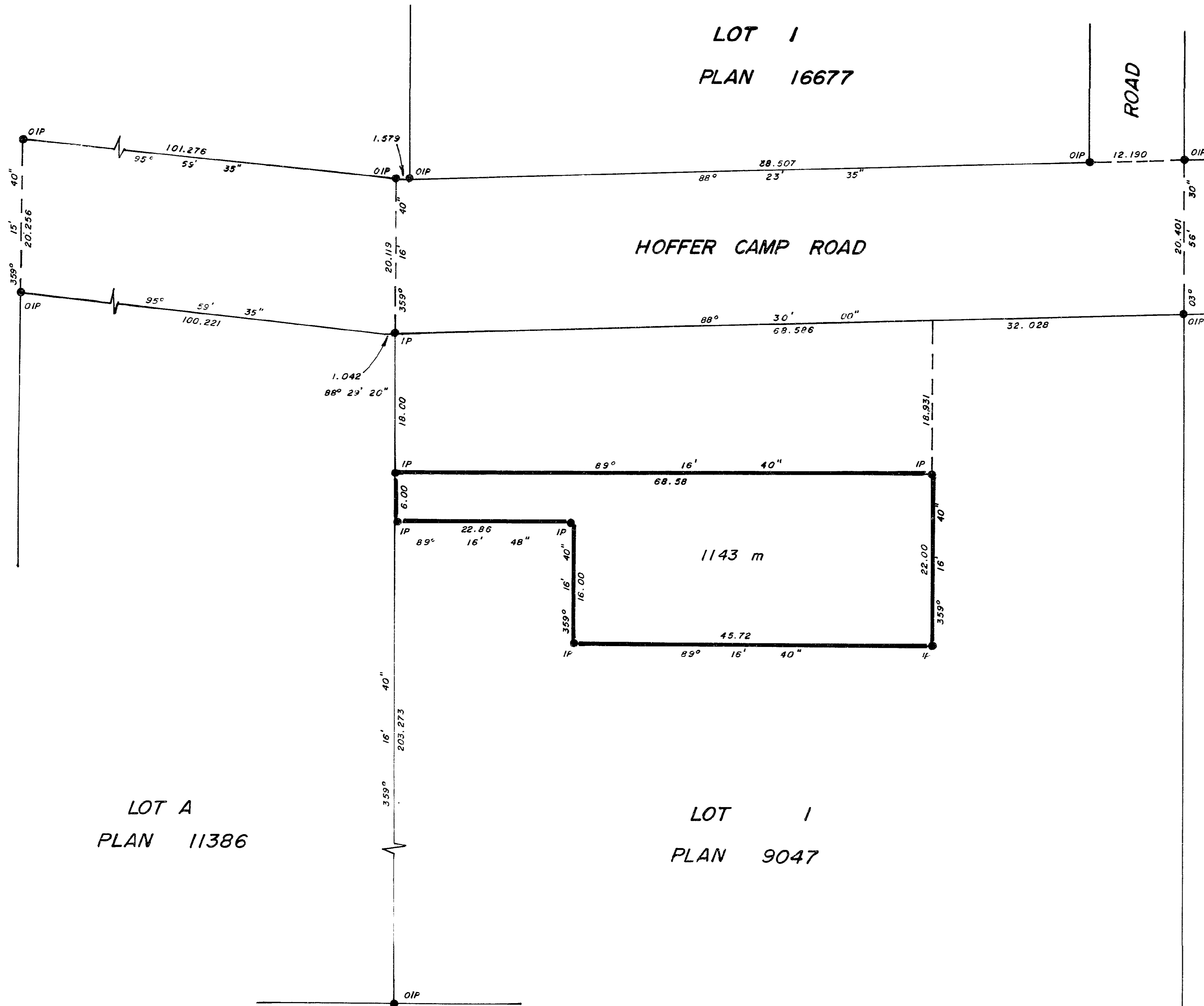
26-FF-226

PLAN NO. 28805

Deposited in the Land Title Office
at Prince George this 16th day of

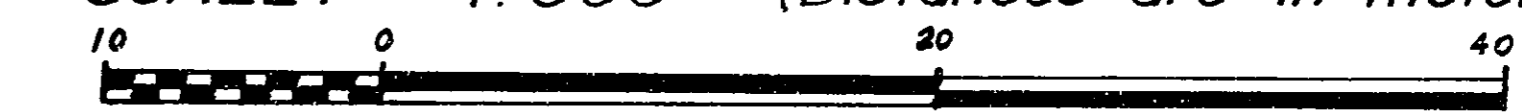
Nov 1982

Registrar *E. J. Ross*



REFERENCE PLAN OF EASEMENT
IN LOT 1, PLAN 9047, D.L. 823,
CARIBOO DISTRICT.

SCALE: 1:500 (Distances are in meters)



Bearings are astronomic and are derived from
Plan 11386

● IP Standard Iron Post.
○ Denotes Old.

I, V. Bartell, a British Columbia land surveyor of
Prince George in British Columbia certify that I
was present at and personally superintended the
survey represented by this plan and that the
survey and plan are correct. The survey was
completed on the 27th day of October, 1981

V. Bartell
V. Bartell, B.C.L.S.

This plan lies within the Fraser Fort George
Regional District.

McWilliam, Whyte, Goble & Associates
B.C. Land Surveyors
Prince George Kamloops Smithers Salmon Arm

REF 81212

D 3-11-82