

PLAN OF STATUTORY RIGHT-OF-WAY
FOR HIGHWAY THROUGH
LOTS 1 TO 8 INCLUSIVE, BLOCK 34 &
LOTS 1 TO 7 INCLUSIVE, BLOCK 35, PLAN 727
DISTRICT LOT 933
CARIBOO DISTRICT - BRITISH COLUMBIA
SCALE: 1 : 500



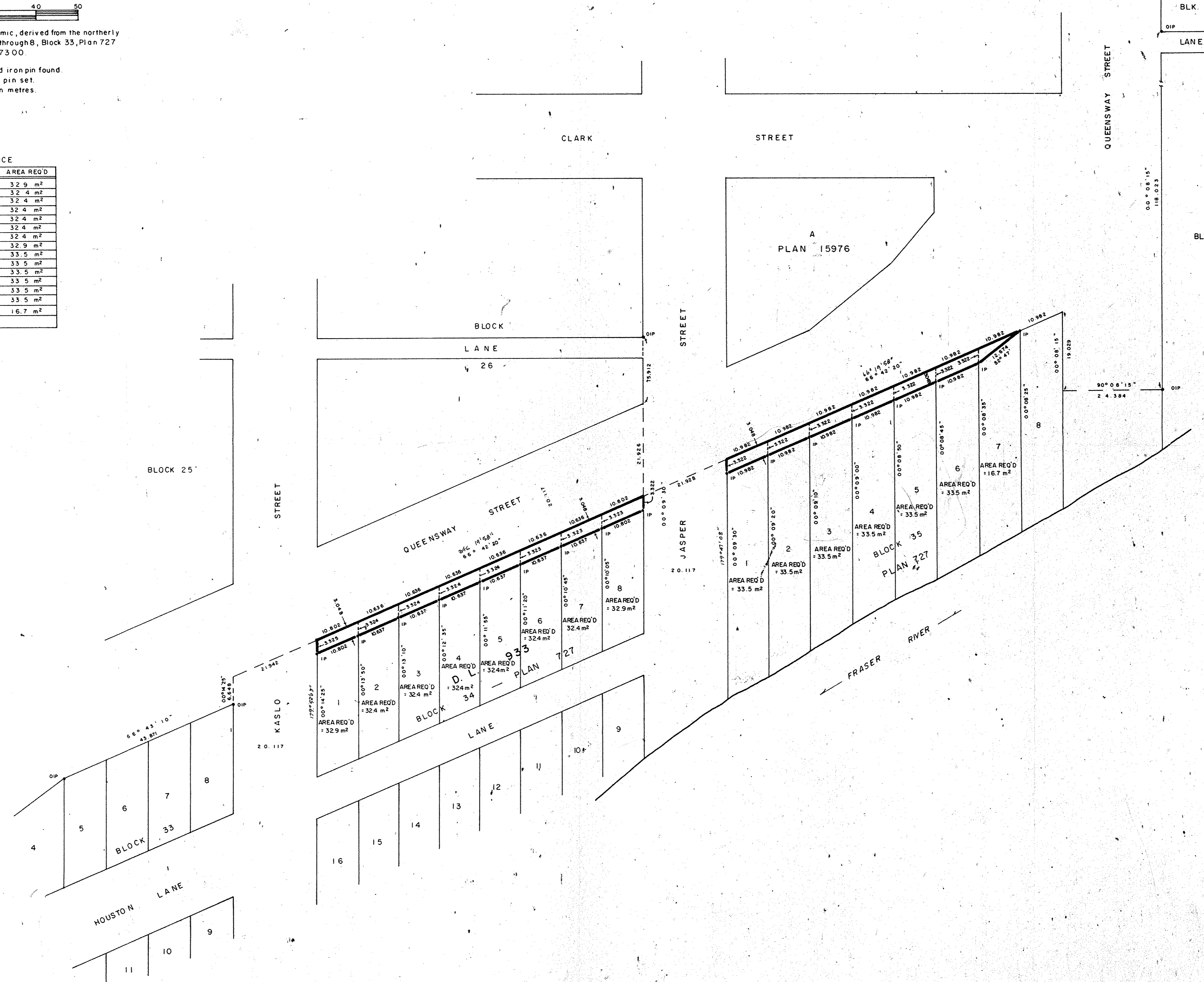
NOTE: Bearings are astronomic, derived from the northerly boundary of Lots 5 through 8, Block 33, Plan 727 as shown on Plan 273 00.

LEGEND: * OIP denotes an old iron pin found.
• IP denotes an iron pin set.
All distances are in metres.

BOOK OF REFERENCE

PARCEL	AREA REQ'D
LOT 1, BLOCK 34	32.9 m ²
LOT 2, BLOCK 34	32.4 m ²
LOT 3, BLOCK 34	32.4 m ²
LOT 4, BLOCK 34	32.4 m ²
LOT 5, BLOCK 34	32.4 m ²
LOT 6, BLOCK 34	32.4 m ²
LOT 7, BLOCK 34	32.4 m ²
LOT 8, BLOCK 34	32.9 m ²
LOT 1, BLOCK 35	33.5 m ²
LOT 2, BLOCK 35	33.5 m ²
LOT 3, BLOCK 35	33.5 m ²
LOT 4, BLOCK 35	33.5 m ²
LOT 5, BLOCK 35	33.5 m ²
LOT 6, BLOCK 35	33.5 m ²
LOT 7, BLOCK 35	16.7 m ²
ALL IN PLAN 727	

(JII) PLOTTED
PLAN No 28793
Deposited in the Land Title Office at Prince George, B.C. this 12 day of May, 1982.
Registrar



I, RONALD L. JOHNS, a British Columbia Land Surveyor, of Prince George, in British Columbia, certify that I was present at and personally supervised the survey represented by this plan, and that the survey and plan are correct. The survey was completed on the 21st day of January, 1982.

Ronald L. Johns

Approved under the Land Title Act this 12th day of OCTOBER, 1982

W. Usner
Approving Officer, Ministry of Transportation and Highways.

This plan lies within the Fraser - Fort George Regional District.

WD. USHER & ASSOCIATES
LAND SURVEYORS
PRINCE GEORGE - B.C.
01-29-32 12328 A