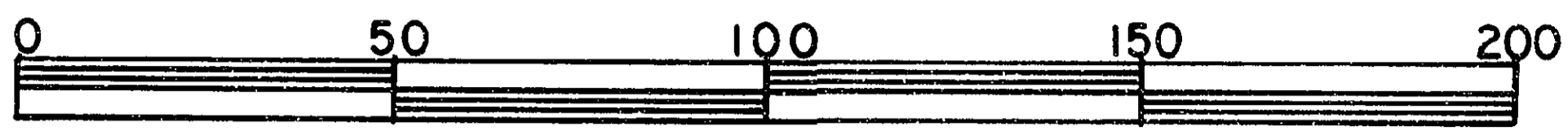


26-FF-226

PLAN OF EASEMENT THROUGH
LOT 1, PLAN 28771
DISTRICT LOT 2426
CARIBOO DISTRICT-BRITISH COLUMBIA

SCALE: 1 : 2000



NOTE: Bearings are astronomic, derived from the northerly boundary of Lot 1, Plan 28771

LEGEND: • OIP denotes an old iron pin found.
• IP denotes an iron pin set.

PLAN N^o 28772

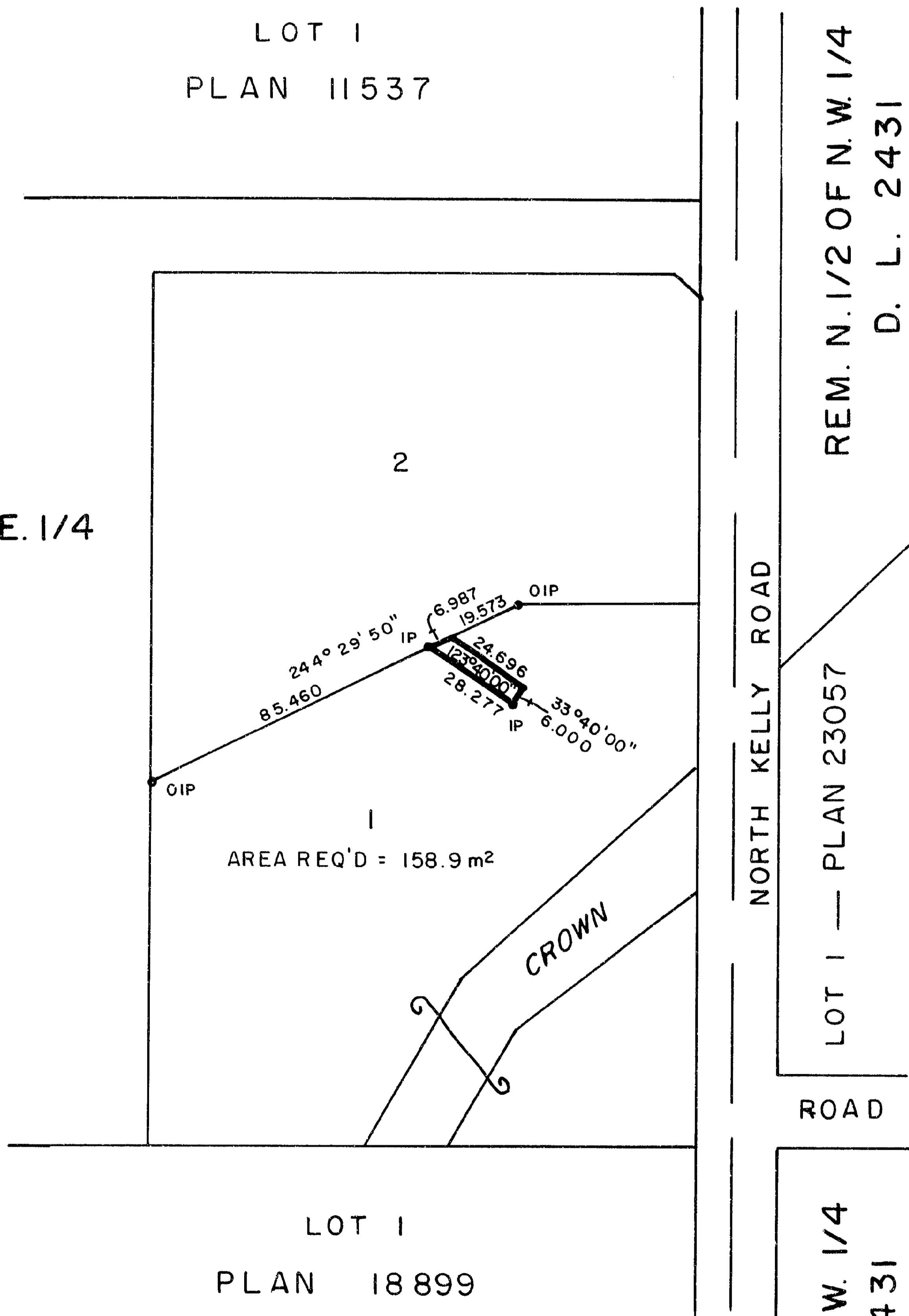
Deposited in the Land Title Office at Prince George, B.C. this 4th day of November, 1982.

"E. J. Raven" Registrar



LOT 1
PLAN 11537

REM. N. 1/2 OF N.E. 1/4
D. L. 2426



LOT 1
PLAN 18899

REM. N. 1/2 OF N.W. 1/4
D. L. 2431

LOT 1 - PLAN 23057

ROAD

S. 1/2 OF N.W. 1/4
D.L. 2431

I, DONALD A. DUFFY, a British Columbia Land Surveyor, of Prince George, in British Columbia, certify that I was present at and did personally superintend the survey represented by this plan, and that the survey and plan are correct. The survey was completed on the 12 day of OCT., 1982.

This plan lies within the Fraser- Fort George Regional District.

W. D. USHER & ASSOCIATES
LAND SURVEYORS
PRINCE GEORGE - B.C.