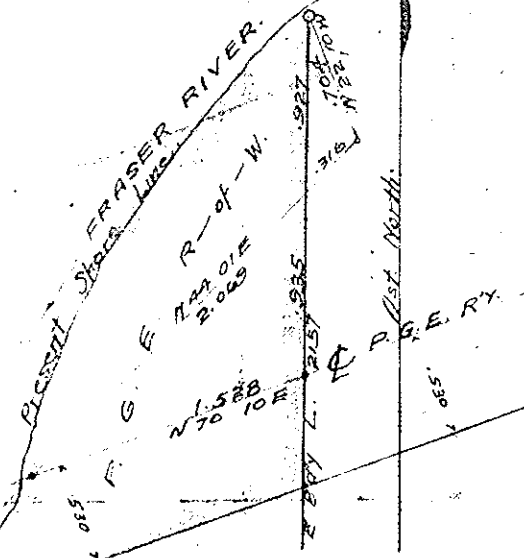


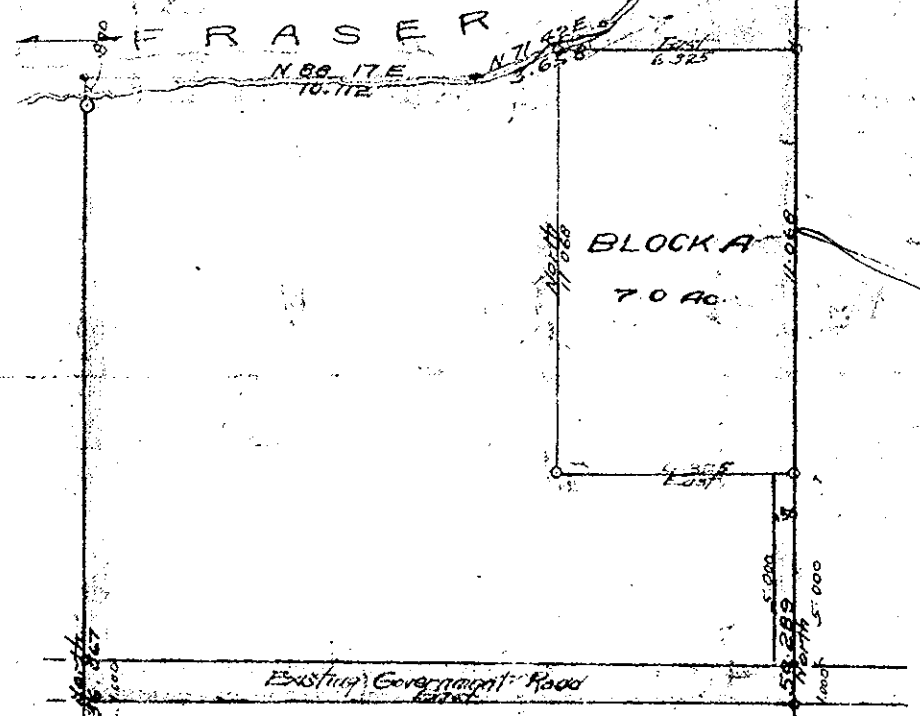
MAP No. 2876
 DEPOSITED 21ST JANUARY 1942.

R. Burden
 REGISTERED

INSET PLAN
 SCALE: 1 CH TO 1 IN.



SUBDIVISION
 PLAN.
 SHOWING
 BLOCK B
 PART OF
 LOT 2157.
 CARIBOO DISTRICT.
 BRITISH COLUMBIA.
 SCALE: 5 CHS. TO 1 IN.



L. 2157

L. 951

I, F.P. Burden, a British Columbia Land Surveyor,
 make oath and say that I was present at and did personally
 superintend the survey represented by this plan, and that the sur-
 vey and plan are correct.
 The said survey was completed on the 14th day
 of October, 1940.

Sworn before me
 this 19th day of October, 1940
W. Higgins

F.P. Burden
 B.C.L.S.

Inspected Aug 28th 1941
F.P. Burden
 B.C.L.S.

Note: Bearings derived from
 the East Boundary of
 Lot 2157.

Corners marked on
 ground by Wood Posts.

OWNER

Joseph Guay
F.P. Burden

WITNESSES

L. 2094

APPROVED UNDER THE
 LAND SURVEY ACT
 September 24 1941 Acting Asst. Chief Engineer P.W.D.
 Via *W.P. Bell*