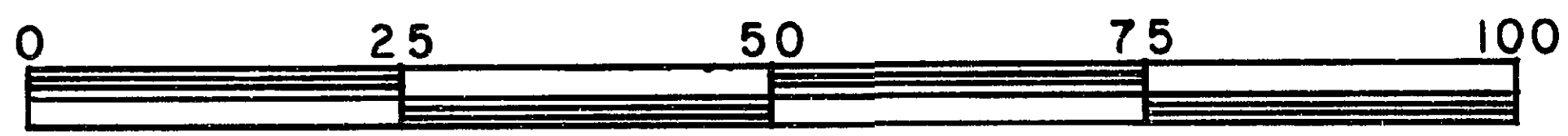


26.FF-226

REFERENCE PLAN OF
 STATUTORY RIGHT-OF-WAY THROUGH
 LOT 41, PLAN 24848
 DISTRICT LOT 905
 CARIBOO DISTRICT—BRITISH COLUMBIA
 SCALE: 1 : 1000



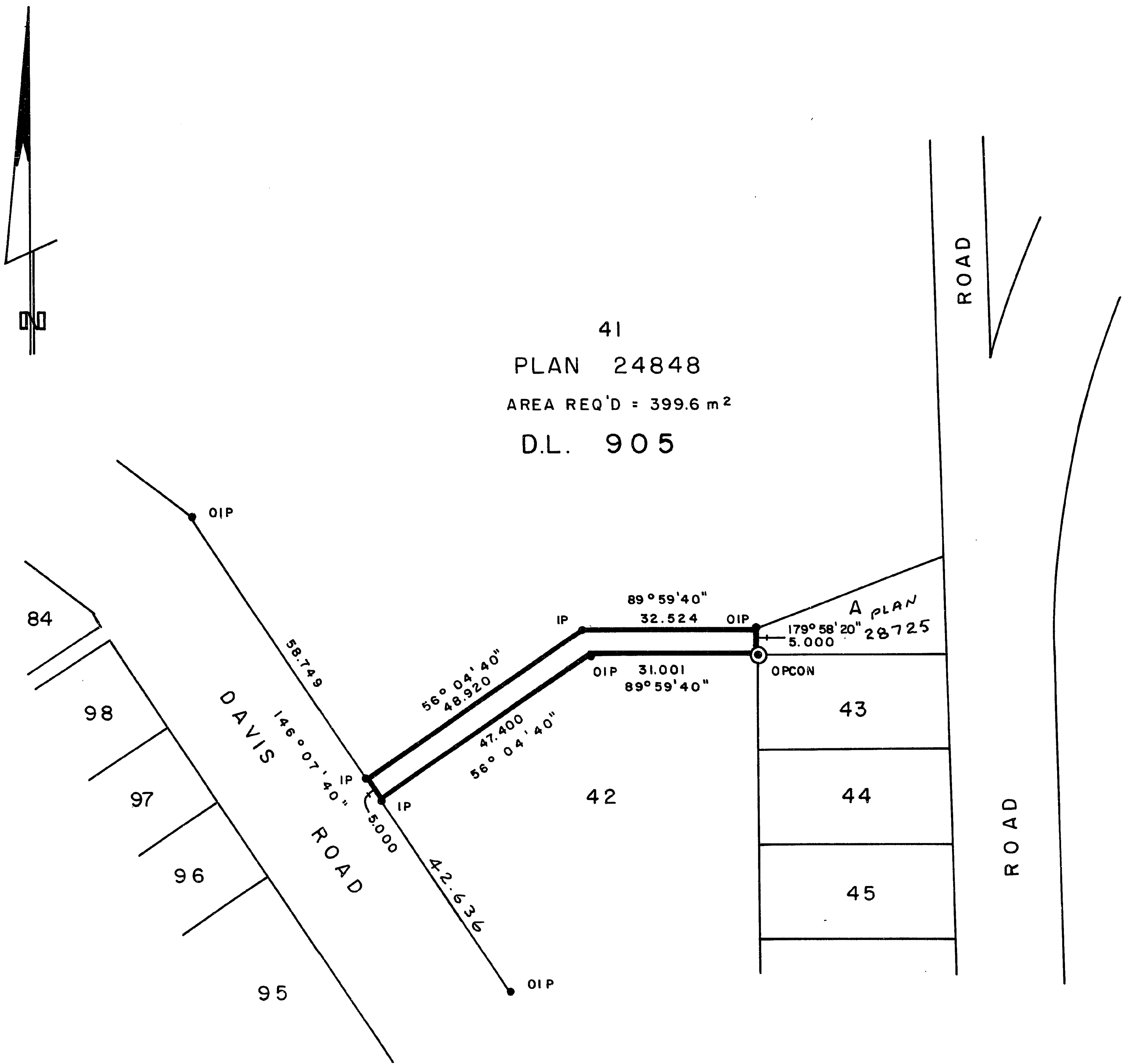
PLAN N^o 28726

Deposited in the Land Title
 Office at Prince George, B.C. this
~~21~~ day of Oct, 1982.

NOTE: Bearings are astronomic, derived from the
 north boundary of Lot 42, Plan 24848.

LEGEND: \odot OPCON denotes an old concrete monument found.
 • OIP denotes an old iron pin found.
 • IP denotes an iron pin set.

Registrar E. J. [Signature]



I, DONALD A. DUFFY, a British Columbia Land
 Surveyor, of Prince George, in British Columbia,
 certify that I was present at and did personally
 superintend the survey represented by this plan,
 and that the survey and plan are correct. The
 survey was completed on the 13 day of SEPT.,
 1982.

[Signature]

This plan lies within the Fraser- Fort George
 Regional District.

W. D. USHER & ASSOCIATES
 LAND SURVEYORS
 PRINCE GEORGE — B.C.
 J N 58 13497 A