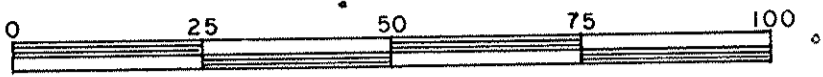


PLAN OF SUBDIVISION OF PART OF
 LOT 41, PLAN 24848
 DISTRICT LOT 905
 CARIBOO DISTRICT — BRITISH COLUMBIA
 SCALE: 1 : 1000



NOTE: Bearings are astronomic, derived from the north boundary of Lot 43, Plan 24848.

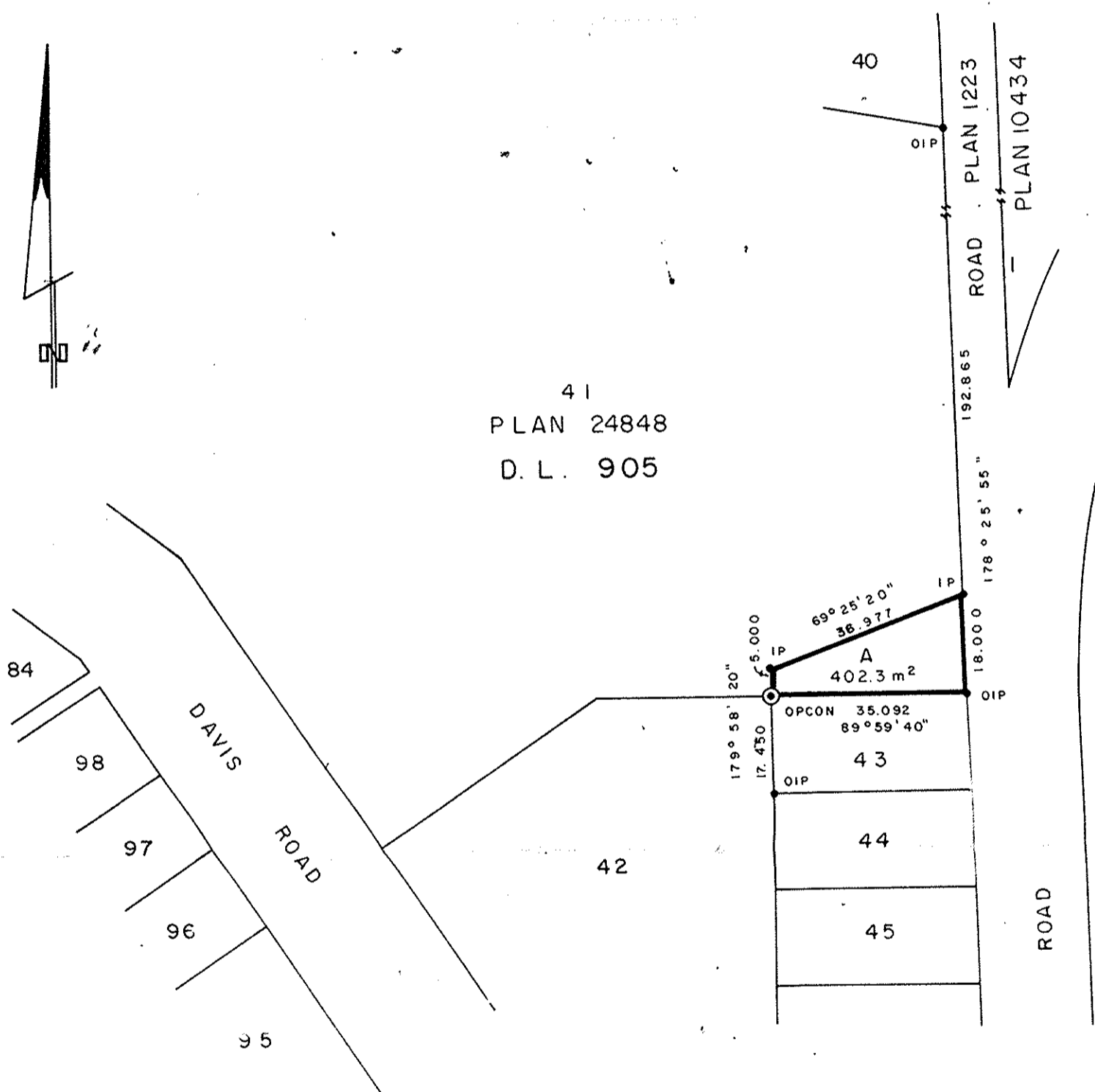
LEGEND: \odot OPCON denotes an old concrete monument found.
 • OIP denotes an old iron pin found.
 • IP denotes an iron pin set.

(16) PLOTTED

PLAN No **28725**

Deposited in the Land Title Office at Prince George, B.C. this 21st day of Oct, 1982.

 Registrar *EJR*



I, DONALD A. DUFFY, a British Columbia Land Surveyor, of Prince George, in British Columbia, certify that I was present at and did personally superintend the survey represented by this plan, and that the survey and plan are correct. The survey was completed on the 13 day of SEPT., 1982.

[Signature]

CITY OF PRINCE GEORGE

[Signature]
 Mayor

[Signature]
 Clerk

Approved under the Land Title Act this 30 day of SEPT., 1982

[Signature]
 Approving Officer, City of Prince George

This plan lies within the Fraser-Fort George Regional District

W. D. USHER & ASSOCIATES
 LAND SURVEYORS
 PRINCE GEORGE — B.C.
 J.N. 58 13497