

REFERENCE PLAN OF
ROAD DEDICATION THROUGH
LOT A, PLAN 20053
DISTRICT LOT 2400
CARIBOO DISTRICT — BRITISH COLUMBIA
SCALE: 1 : 1000



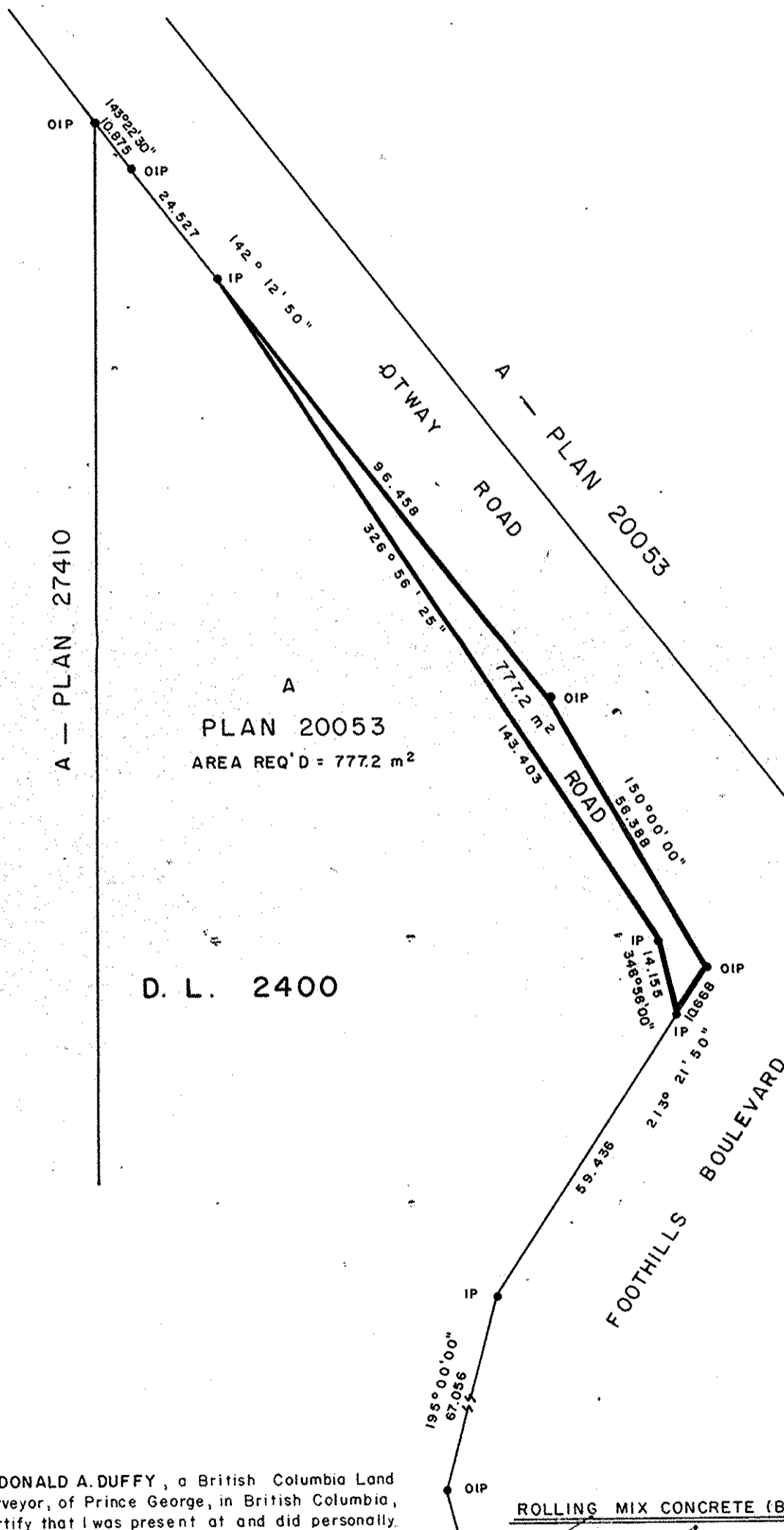
NOTE: Bearings are astronomic, derived from the northeasterly boundary of Lot A, Plan 20053 as shown on Plan 27410.

LEGEND: ● OIP denotes an old iron pin found.
● IP denotes an iron pin set.

28723

PLAN No 28723
Deposited in the Land Title
Office at Prince George, B.C. this
21 day of Oct, 1982.

E. S. R.
Registrar



A
PLAN 20053
AREA REQ'D = 777.2 m²

D. L. 2400

Witness as to both
Jane Swan
202 - 1040 Howie Ave
Coquitlam, B.C.
File Clerk

BANK OF MONTREAL
By its attorneys PIA 597

Authorized Signatory *Assistant manager credit*

Authorized Signatory *manager credit*

I, DONALD A. DUFFY, a British Columbia Land Surveyor, of Prince George, in British Columbia, certify that I was present at and did personally superintend the survey represented by this plan, and that the survey and plan are correct. The survey was completed on the 22 day of JULY, 1982.

[Handwritten signature of Donald A. Duffy]

ROLLING MIX CONCRETE (B.C.) LTD.

[Handwritten signature]
Authorized Signatory **PRESIDENT**

Approved under the Land Title Act
this 30 day of JULY, 1982

[Handwritten signature]
Approving Officer, City of Prince George

This plan lies within the Fraser-Fort George
Regional District.

W. D. USHER & ASSOCIATES
LAND SURVEYORS
PRINCE GEORGE — B.C.
O K 53 13438

APPROVED
Authorized Signatory
Manager's Initials
[Handwritten initials]

H.O. 5265B

D 20-10-82