

EXPLANATORY PLAN TO ACCOMPANY  
 LEASE OF A PORTION OF THE GROUND FLOOR  
 OF A BUILDING LOCATED ON  
 LOT A, PLAN 20275 EXCEPT PLANS  
 23706 AND 23714  
 DISTRICT LOT 753  
 CARIBOO DISTRICT - BRITISH COLUMBIA

(HG)

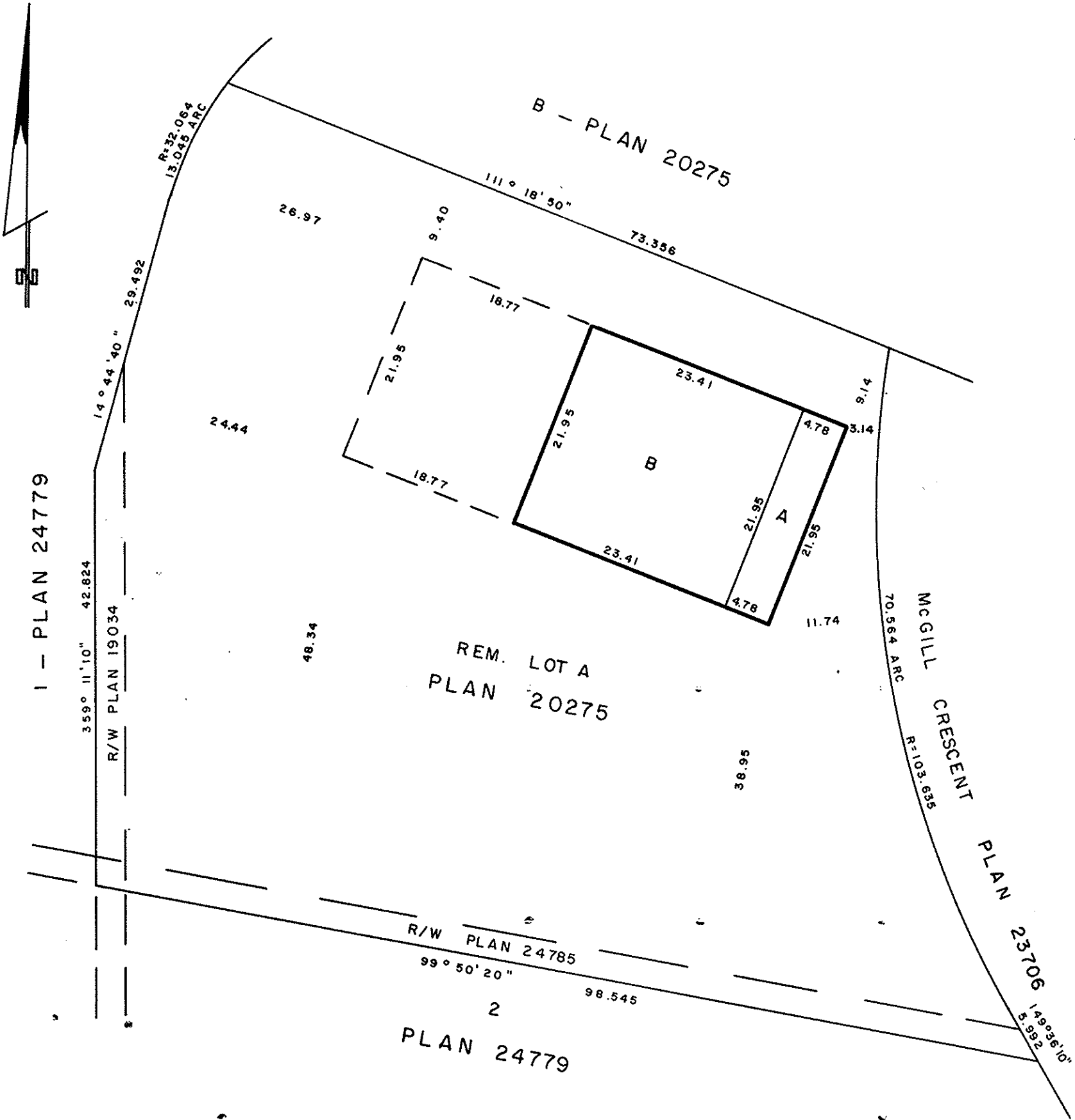
SCALE: 1 : 500



NOTE: Property dimensions are derived  
 from Plan 23714.

PLAN No 28695  
 Deposited in the Land Title  
 Office at Prince George, B.C. this  
8 day of Oct, 1982

E.S.R.  
 Registrar



CERTIFIED CORRECT  
 This 4 day of Aug, 1982.

[Signature]  
 D.A. DUFFY, B.C.L.S.

This plan lies within the Fraser-Fort George  
 Regional District.

W.D. USHER & ASSOCIATES  
 LAND SURVEYORS  
 PRINCE GEORGE - B.C.