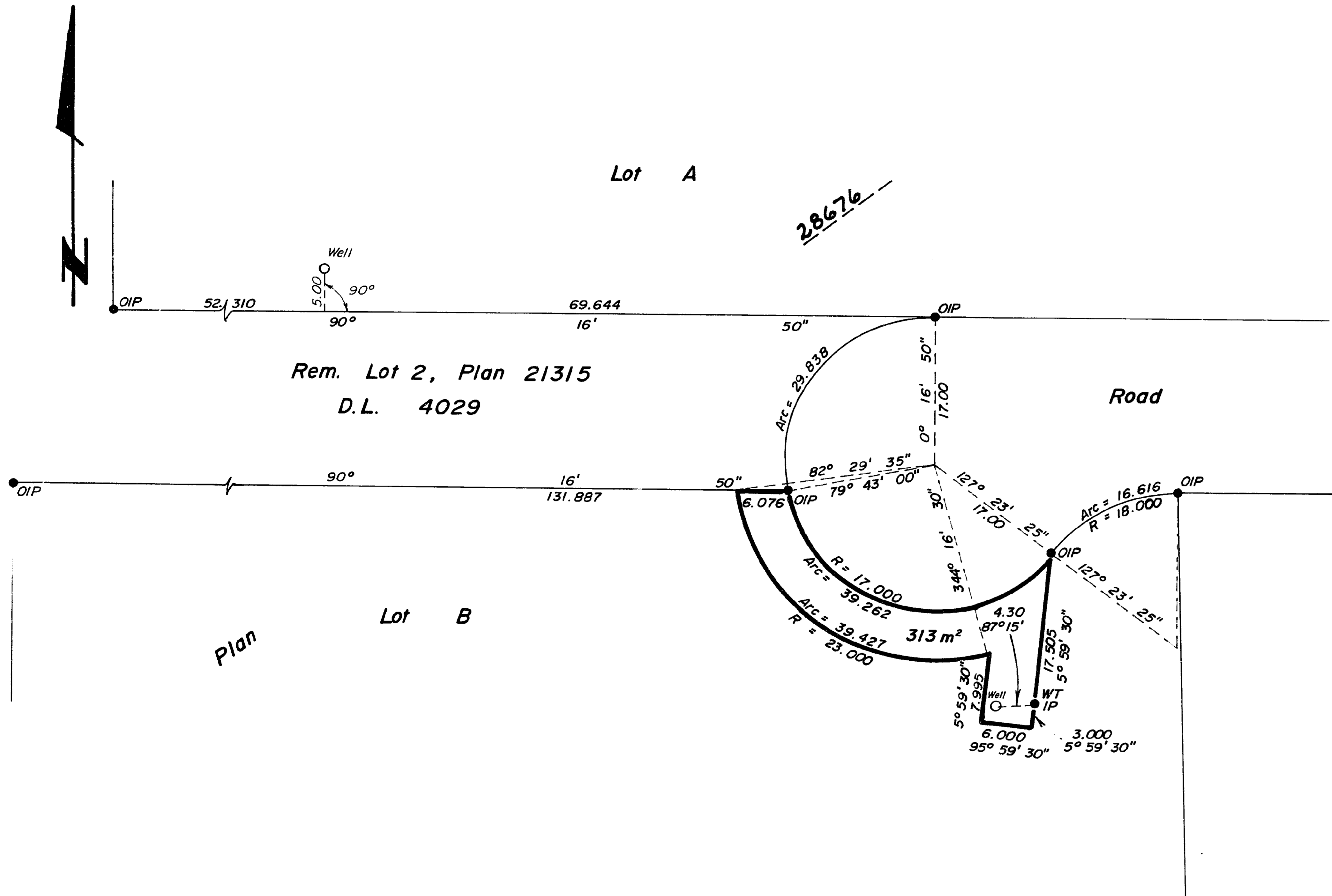


26-FF

PLAN 28677

Deposited in the Land Title Office
at Prince George, B.C.
on the 15th day of October, 1982.

"E. J. Rasmussen" per *[Signature]*
Registrar



REFERENCE PLAN OF EASEMENT IN IN LOT B, PLAN 28676 , D.L. 4029, CARIBOO DISTRICT.

SCALE 1:500 (Distances are in meters)



Bearings are astronomic and are derived from
Plan 28676

- P.con. Standard Concrete Post.
- P.Rock Standard Rock Post.
- P.P. Standard Pipe Post.
- I.P. Standard Iron Post.
- P. Wooden Post.
- L.P. Lead Plug.
- Denoting "Old"
- WT. Denoting "Witness"
- CIP. Capped Iron Post.
- TH. Traverse Hub.

I, V. Bartell, a British Columbia
land surveyor, of Prince George,
in British Columbia, certify that I was present
and personally supervised the survey
represented by this plan, and that the survey
and plan are correct. The survey was completed
on the 20 day of August, 1982.

[Signature]
V. Bartell, B.C.L.S.

This Plan lies within the Fraser-Fort George
Regional District

McWilliam-Whyte-Goble & Associates
B.C. Land Surveyors
Kamloops-Prince George-Salmon Arm-Smithers
FB/P 4029 File No. 81226