

26-FF-226

28665

LOT 2
PLAN 8349

R/W
PL. 24374

PLAN NO. 28665

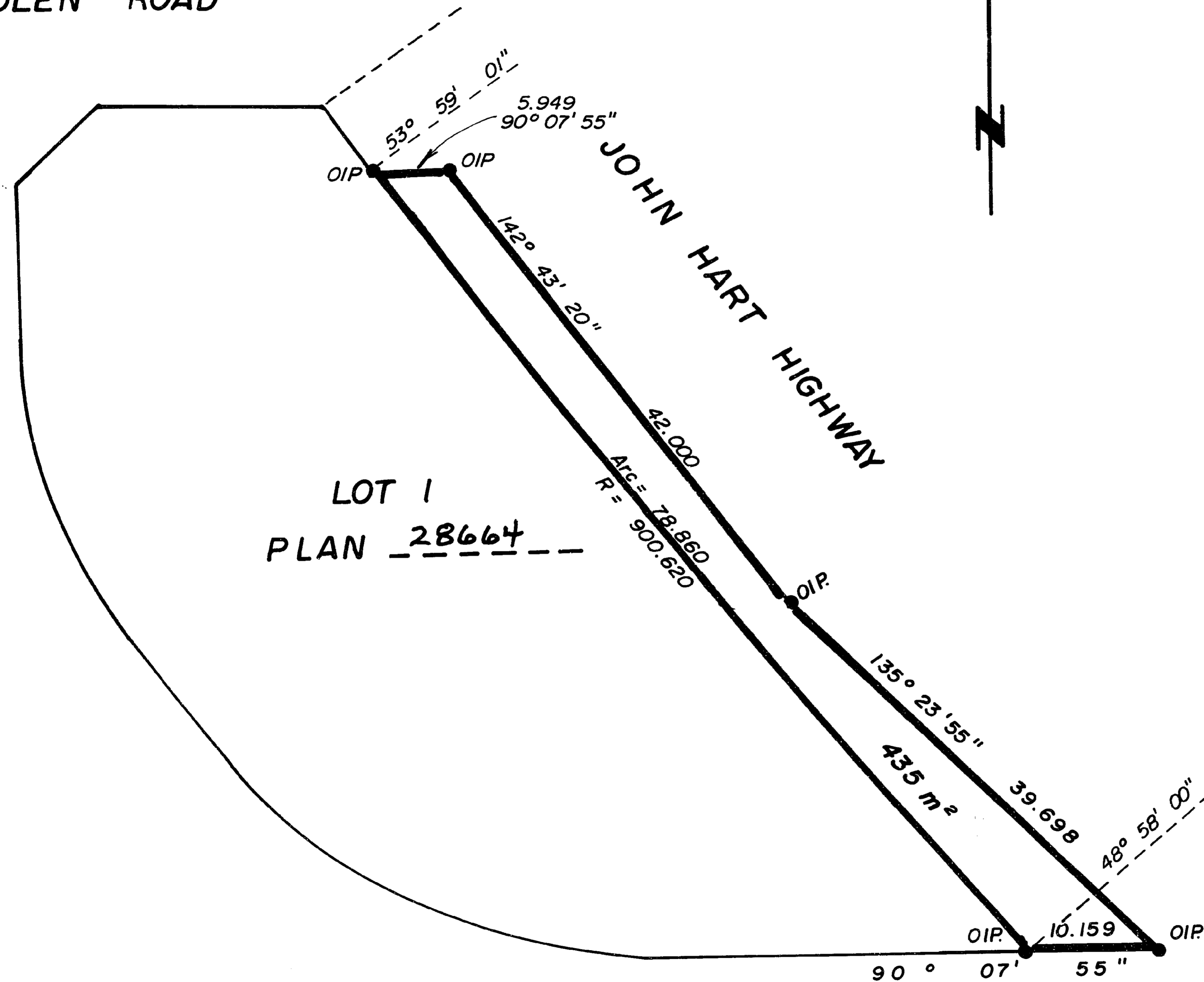
DEPOSITED IN THE LAND TITLE OFFICE AT
PRINCE GEORGE THIS 28th DAY OF Sept. 1982.

E. J. Raven *per sig.*
REGISTRAR

HANDLEN ROAD

LOT 1
PLAN 28664

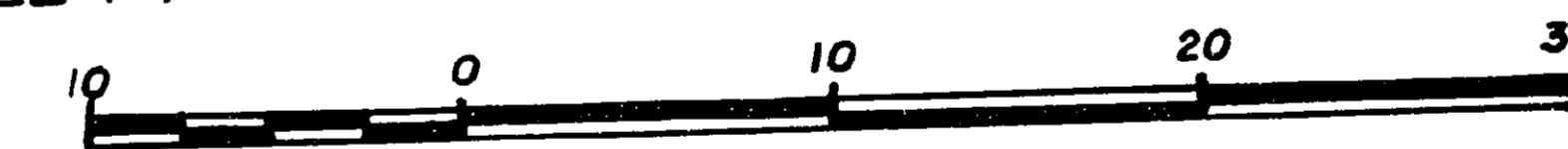
JOHN HART HIGHWAY



CITY OF PRINCE GEORGE

PLAN OF STATUTORY RIGHT-OF-WAY
IN LOT 1, PLAN 28664 ---,
DISTRICT LOT 4047, CARIBOO DISTRICT.

SCALE: 1:500 (ALL DISTANCES ARE IN METRES)



BEARINGS ARE ASTRONOMIC DERIVED
FROM PLAN 28664 .

- IP.....STANDARD IRON POST.
-DENOTES "OLD"

I, G. KILBRIDE, A BRITISH COLUMBIA LAND SURVEYOR OF
PRINCE GEORGE IN BRITISH COLUMBIA CERTIFY THAT I
WAS PRESENT AT AND PERSONALLY SUPERINTENDED
THE SURVEY REPRESENTED BY THIS PLAN AND
THAT THE SURVEY AND PLAN ARE CORRECT. THE
SAID SURVEY WAS COMPLETED ON THE 21st
DAY OF APRIL ---- 1982.

BOOK OF REFERENCE	
LOT 1, PLAN <u>28664</u>	435 m ²

Gordon Kilbride
GORDON KILBRIDE, B.C.L.S.

THIS PLAN LIES WITHIN THE FRASER
FORT GEORGE REGIONAL DISTRICT.

Mc WILLIAM, WHYTE, GOBLE, & ASSOCIATES,
B.C. LAND SURVEYORS,
PRINCE GEORGE - KAMLOOPS - SMITHERS - SALMON ARM.

REF. NO. 81201-3

D.L. 4047.