

PLOTTED (G.U.)

PLAN NO. 28664

DEPOSITED IN THE LAND TITLE OFFICE AT PRINCE GEORGE THIS 28 DAY OF Sept 1982.

F.S. P.
REGISTRAR

D.L. 2424
LOT 8
PLAN 8935

LOT 2
PLAN 8349

D. L. 2433
PLAN 9517
PCL. A 4 5 PCL. B 8

HANDLEN ROAD

WEISBROD ROAD

LOT 15
PLAN 16759

PLAN 12947

D.L. 4048
L. 2

8970
8 L. 3

PLAN L. 4

L. 5

S. KELLY ROAD

AMENDED LOT 26

PLAN 16635

AMENDED LOT 25

PLAN 17423

REM. N.W. 1/4
D.L. 4047

PLAN 16615

TURNER ROAD

PLAN 11058

PLAN 11058

PLAN 11058

PLAN 11058

PLAN 11058

PLAN 11058

PLAN 11058

PLAN 11058

PLAN 11058

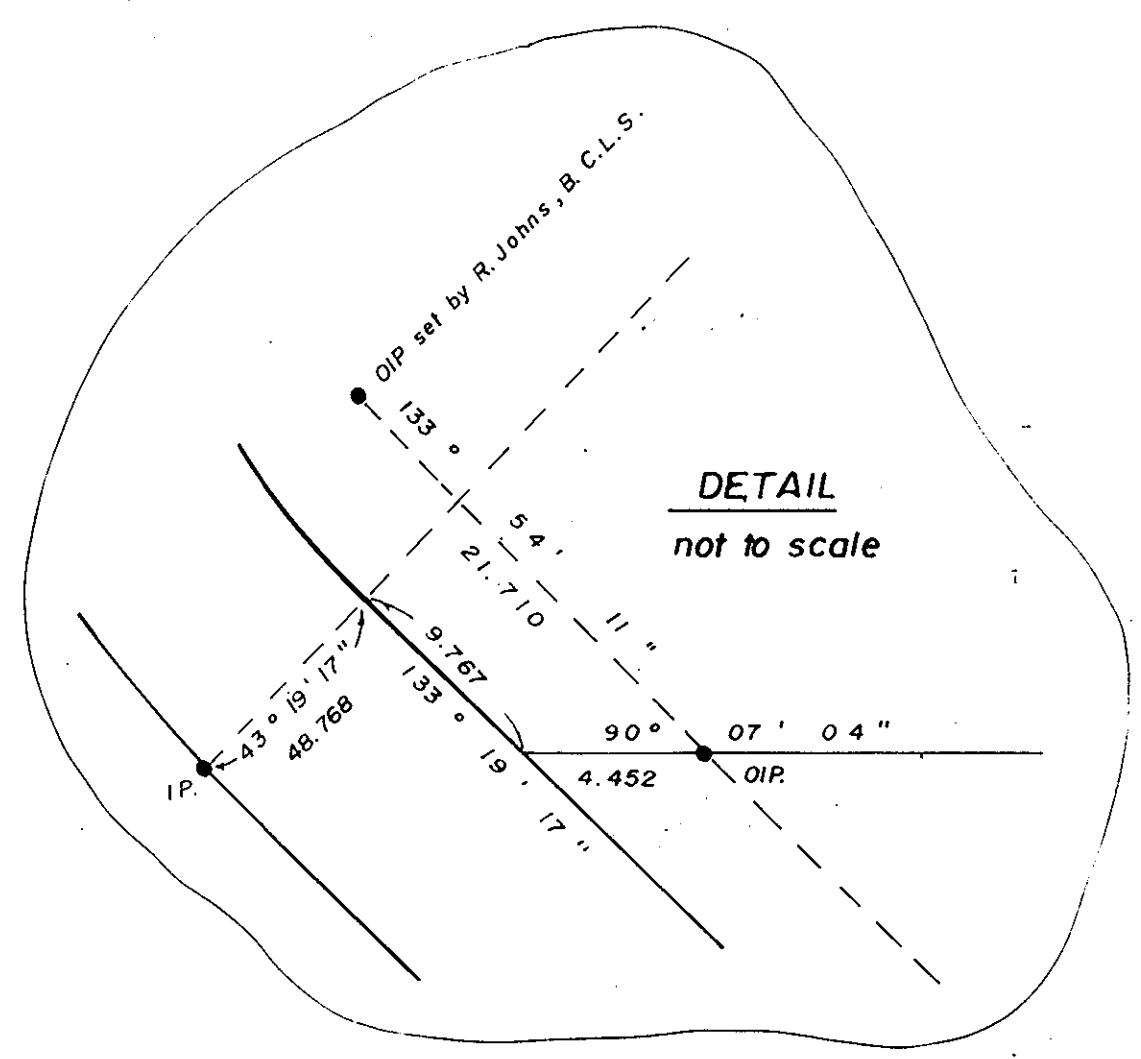
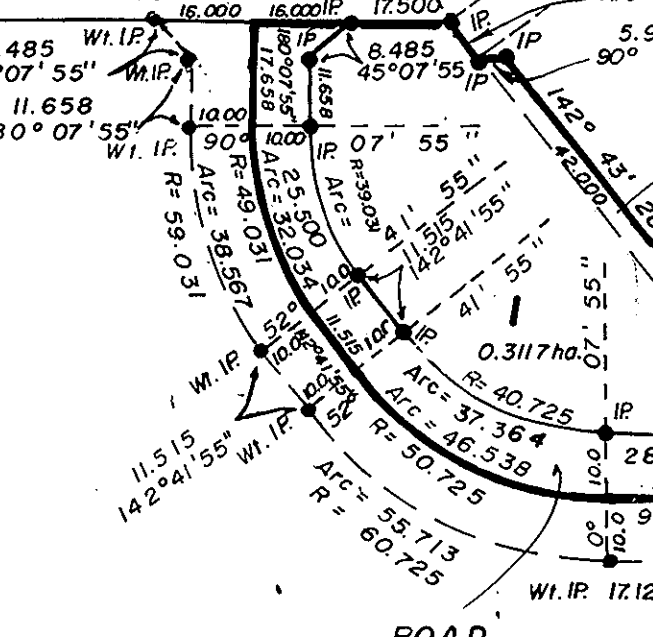
PLAN 11058

PLAN 11058

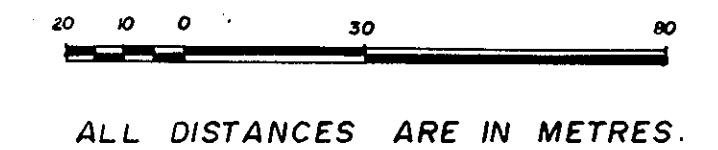
PLAN 11058

PLAN 11058

PLAN 11058



PLAN OF SUBDIVISION OF
PART OF REM. OF N.W. 1/4
D.L. 4047 & CLOSED ROAD,
CARIBOO DISTRICT.
SCALE: 1:1250



ALL DISTANCES ARE IN METRES.

LEGEND

BEARINGS ARE ASTRONOMIC DERIVED FROM W.BODY. HIGHWAY - 133° 18' 40" ON PLAN H-226

- I.P. STANDARD IRON POST.
- O. DENOTES "OLD"
- WT. DENOTES "WITNESS"

APPROVAL OF THIS SUBDIVISION PLAN IS SUBJECT TO THE CONDITION THAT THERE BE CONCURRENT REGISTRATION OF ONE RIGHT OF WAY AGREEMENTS CONCERNING MUNICIPAL UTILITY WORKS WHICH SAID AGREEMENTS HAVE BEEN INITIALLED BY ME FOR IDENTIFICATION.

I, GORDON KILBRIDE, A BRITISH COLUMBIA LAND SURVEYOR OF PRINCE GEORGE IN BRITISH COLUMBIA CERTIFY THAT I WAS PRESENT AT AND PERSONALLY SUPERINTENDED THE SURVEY REPRESENTED BY THIS PLAN AND THAT THE SURVEY AND PLAN ARE CORRECT. THE SAID SURVEY WAS COMPLETED ON THE 21 DAY OF APRIL, 1982.

Gordon Kilbride
G. KILBRIDE, B.C.L.S.

APPROVED UNDER THE LAND TITLE ACT
THIS 31 DAY OF AUGUST 1982.

C.E. Olt
APPROVING OFFICER
CITY OF PRINCE GEORGE.

THIS PLAN LIES WITHIN THE FRASER FORT GEORGE REGIONAL DISTRICT.

APPROVED UNDER THE LAND TITLE ACT
THIS 7 DAY OF SEPTEMBER 1982.

[Signature]
APPROVING OFFICER
MINISTRY OF TRANSPORTATION & HIGHWAYS

RAEBER INVESTMENTS LTD.
Inc. # 113236
[Signature]
president
AUTHORIZED SIGNATORIES

MATTE INVESTMENTS LTD.
Inc. # 60429
[Signature]
president
AUTHORIZED SIGNATORIES

HARTWOOD HOLDINGS LTD.
Inc. # 81202
[Signature]
AUTHORIZED SIGNATORIES

McWILLIAM, WHYTE, GOBLE, & ASSOCIATES,
B.C. LAND SURVEYORS,
PRINCE GEORGE-KAMLOOPS-SMITHERS-SALMON ARM...
REF. NO. 81201 (D.L. 4047)