

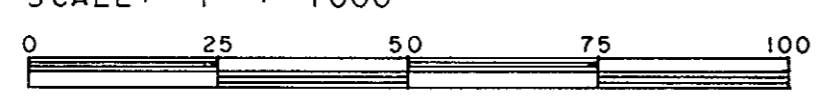
(G.M.)
PLATTED

28852

PLAN No 28656
Deposited in the Land Title
Office at Prince George, B.C. this
24th day of Sept, 1982

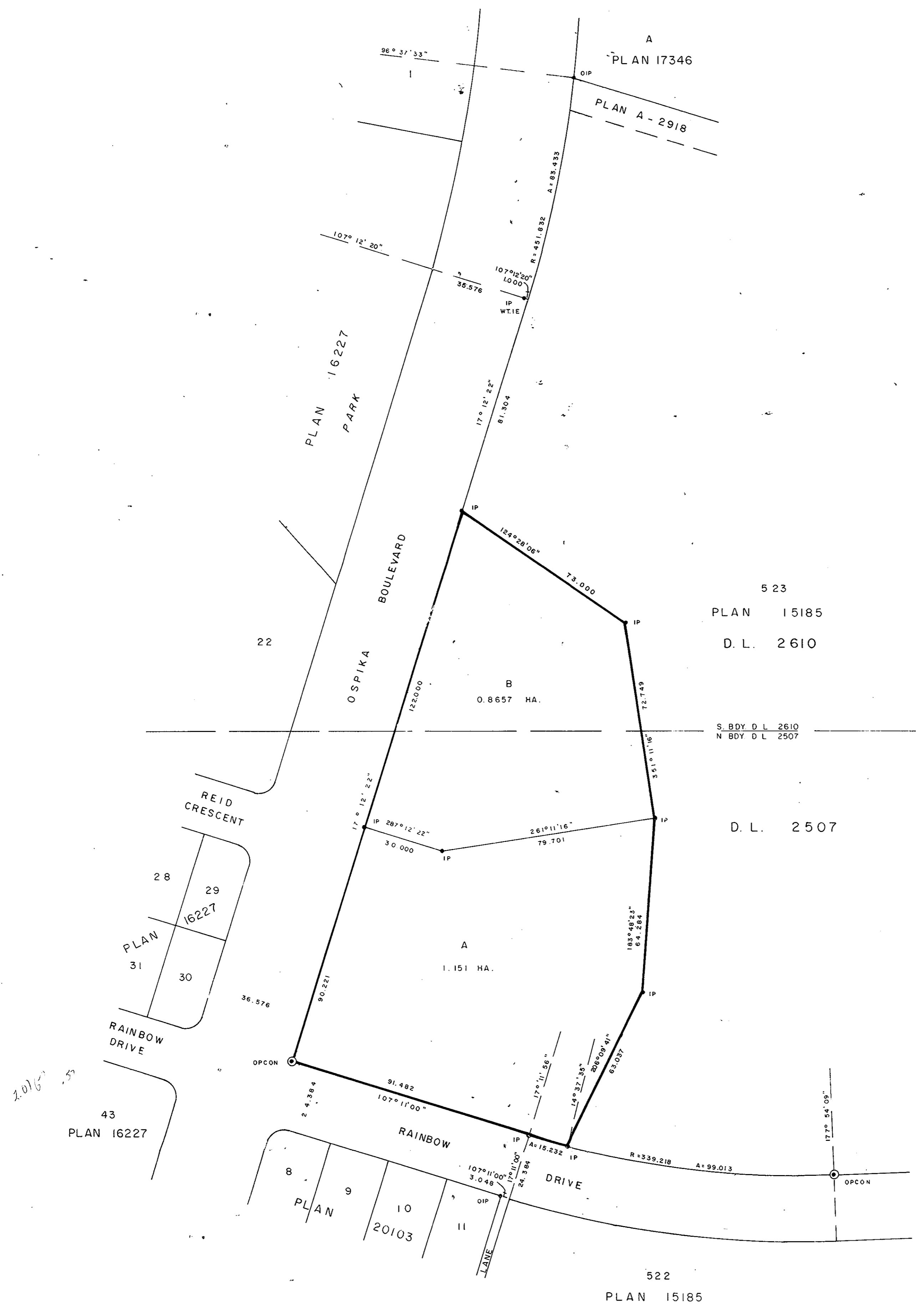
Registrar *[Signature]*

PLAN OF SUBDIVISION OF PART OF
LOT 523, PLAN 15185
DISTRICT LOTS 936, 937, 2507 & 2610
CARIBOO DISTRICT - BRITISH COLUMBIA
SCALE: 1 : 1000



NOTE: Bearings are astronomic, derived from the north
boundary of Rainbow Drive as shown on Plan 20103.

LEGEND: ●OPCON denotes an old concrete monument found.
•OIP denotes an old iron pin found.
•IP denotes an iron pin set.
WT denotes witness.



523
PLAN 15185
D.L. 2610

S. BDY. D.L. 2610
N. BDY. D.L. 2507

D.L. 2507

522
PLAN 15185

I, DONALD A. DUFFY, a British Columbia Land
Surveyor, of Prince George, in British Columbia,
certify that I was present at and did personally
superintend the survey represented by this plan,
and that the survey and plan are correct. The
survey was completed on the 31st day of August
1982.

CITY OF PRINCE GEORGE
Mayor _____
Clerk _____

Approved under the Land Title Act
this 16 day of SEPT, 1982

[Signature]
Approving Officer, City of Prince George

This plan lies within the Fraser-Fort George
Regional District.