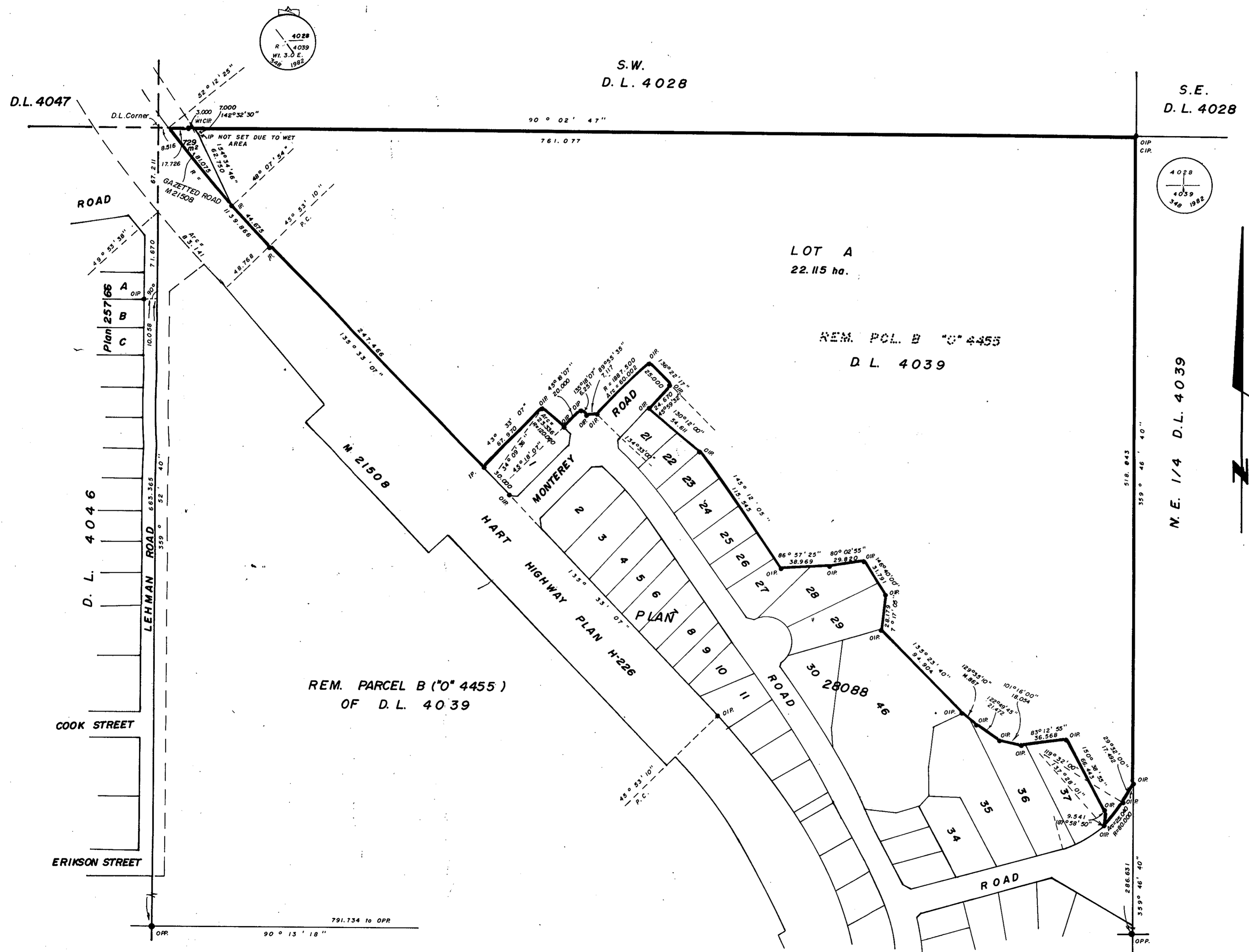


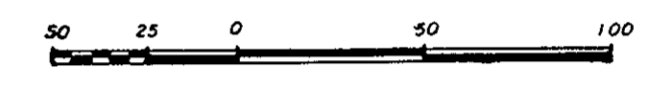
HS, HT
PLOTTED

PLAN NO. 28028
DEPOSITED IN THE LAND TITLE OFFICE AT PRINCE GEORGE
THIS 12 DAY OF Sept. 1982.

E.S.R.
REGISTRAR



PLAN OF SUBDIVISION OF
PART OF REM. PARCEL B (0.4455)
OF DISTRICT LOT 4039, CARIBOO DISTRICT.
SCALE: 1: 2000 (ALL DISTANCES ARE IN METRES.)



BEARINGS ARE ASTRONOMIC DERIVED FROM
PLAN 28088.
● I.P. STANDARD IRON POST.
● P.P. STANDARD PIPE POST.
● C.I.P. CAPPED IRON POST.
○ DENOTES OLD
WI DENOTES WITNESS.

I, V. BARTELL, A BRITISH COLUMBIA LAND SURVEYOR OF
PRINCE GEORGE IN BRITISH COLUMBIA CERTIFY THAT I
WAS PRESENT AT AND PERSONALLY SUPERINTENDED THE
SURVEY REPRESENTED BY THIS PLAN AND THAT THE
SURVEY AND PLAN ARE CORRECT. THE SAID SURVEY WAS
COMPLETED ON THE 3 DAY OF AUGUST, 1982.

V. Bartell
V. BARTELL, B.C.L.S.

OWNER: CLYDE PORTER INC. (INC. #88744)

[Signature]
AUTHORIZED SIGNATORIES.

APPROVED UNDER THE LAND TITLE ACT
THIS 16 DAY OF AUG. 1982

[Signature]
APPROVING OFFICER
CITY OF PRINCE GEORGE.

APPROVED UNDER THE LAND USE CONTRACT
N 36961.
[Signature]
CITY OF PRINCE GEORGE

APPROVED UNDER THE LAND TITLE ACT
THIS 22 DAY OF Sept. 1982.
[Signature]
APPROVING OFFICER
MINISTRY OF TRANSPORTATION AND HIGHWAYS.

THIS PLAN LIES WITHIN THE FRASER FORT
GEORGE REGIONAL DISTRICT.

McWILLIAM, WHYTE, GOBLE, & ASSOCIATES,
B.C. LAND SURVEYORS,
PRINCE GEORGE - KAMLOOPS - SMITHERS - SALMON ARM.
REF. NO. 82105 (D.L. 4039)