

26-FF-226

28614

**CITY OF PRINCE GEORGE
PLAN OF STATUTORY RIGHT OF
WAY IN LOT 8, PLAN 10790
AND REMAINDER OF E 1/2 OF
NW 1/4 OF DISTRICT LOT 1599,
CARIBOO DISTRICT.**

SCALE 1:500 (Distances are in meters)



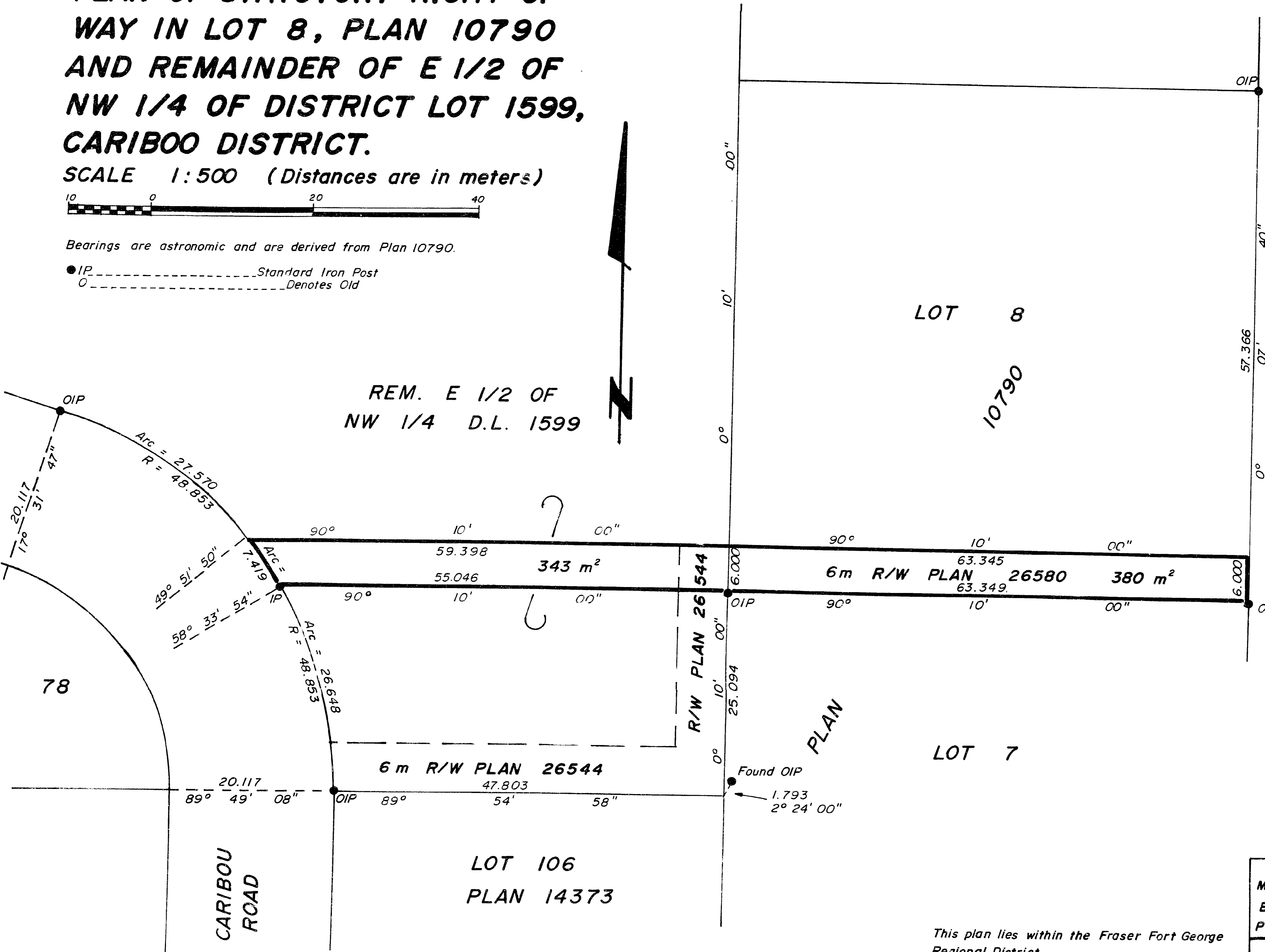
Bearings are astronomic and are derived from Plan 10790.

● IP Standard Iron Post
○ Denotes Old

PLAN NO. **28614**

DEPOSITED IN THE LAND TITLE OFFICE AT
PRINCE GEORGE THIS 2th DAY OF Sept 1982.

"F.J. Raven" *per* *fg.*
REGISTRAR



BOOK OF REFERENCE	
Lot 8, Plan 10790	380 m ²
Rem. E 1/2 of NW 1/4 of	
D.L. 1599	343 m ²

I, V. Bartell, a British Columbia land surveyor of Prince George in British Columbia, certify that I was present at and personally superintended the survey represented by this plan and that the survey and plan are correct. The survey was completed on the 2 day of September 1982.

V. Bartell
V. Bartell, B.C.L.S.

**McWILLIAM, WHYTE, GOBLE & ASSOCIATES,
B.C. LAND SURVEYORS,
PRINCE GEORGE - KAMLOOPS - SMITHERS - SALMON ARM.**

REF. NO. **82115**

This plan lies within the Fraser Fort George Regional District.