

EXPLANATORY PLAN OF CONSOLIDATION OF LOT 2, PLAN 21118 & THAT PART OF CLOSED ROAD SHOWN OUTLINED IN RED ON PLAN 21301 ADJACENT TO LOT 2, PLAN 21118 DISTRICT LOT 751

CARIBOO DISTRICT - BRITISH COLUMBIA

SCALE: 1 : 1000



NOTE: Bearings are astronomic, derived from Plan 21118.

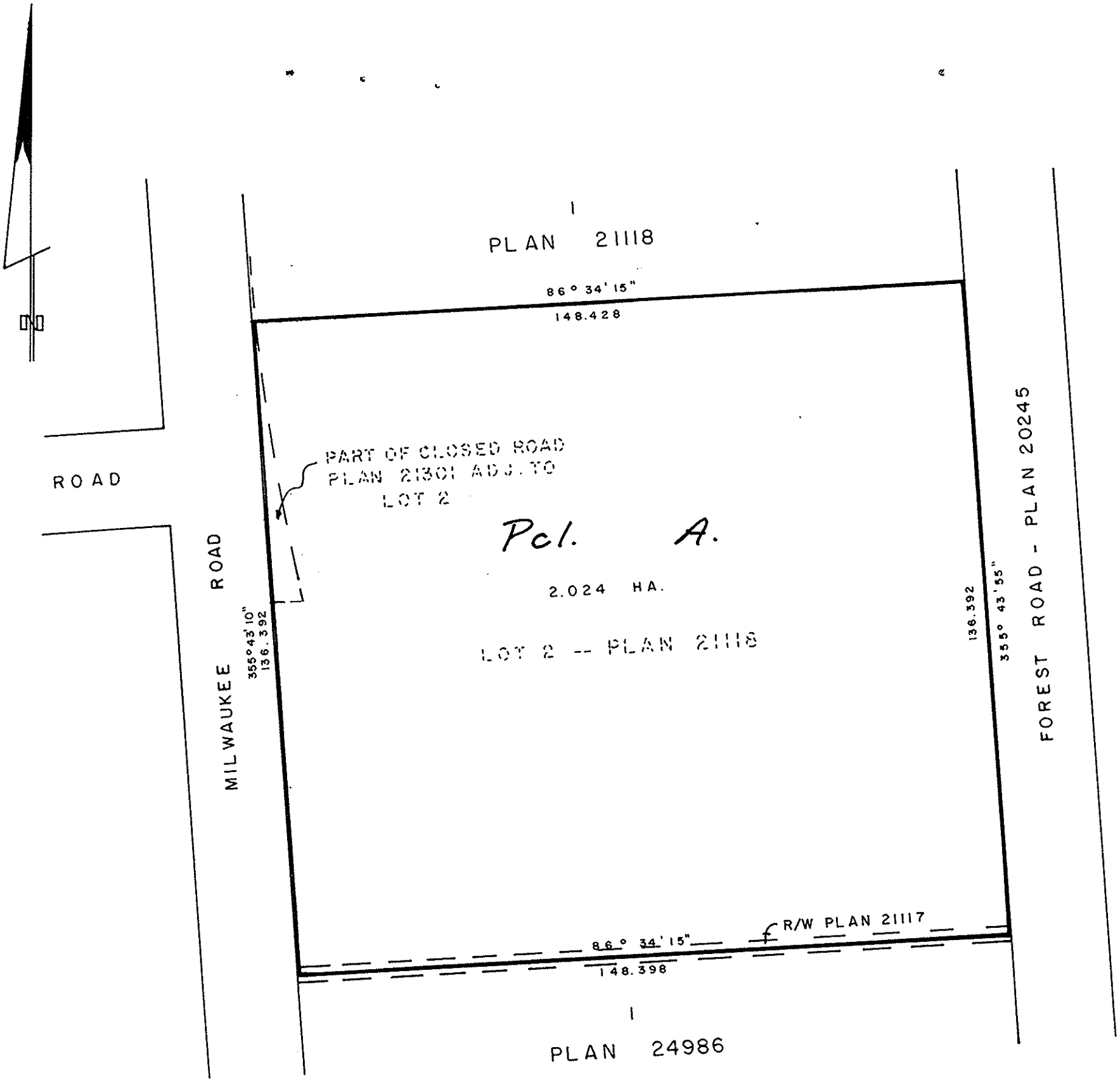
PLOTTED

Handwritten initials 'JC'

PLAN No 28611

Deposited in the Land Title Office at Prince George, B.C. this 7 day of Sep, 1982

F.S.R. Registrar



CERTIFIED CORRECT According to measurements shown on Plans 21118 & 21301. This 26 day of April, 1982.

Signature of D.A. DUFFY, B.C.L.S.

KURT BANZER CONTRACTING LTD. Authorized Signatory (Signature)

Authorized Signatory

W. D. USHER & ASSOCIATES LAND SURVEYORS PRINCE GEORGE - B.C.