

26-FF-226

REFERENCE PLAN OF EASEMENT
 IN LOT B, PLAN 28609,
 DISTRICT LOT 2611, CARIBOO DISTRICT.
 SCALE: 1:500 (ALL DISTANCES ARE IN METRES.)

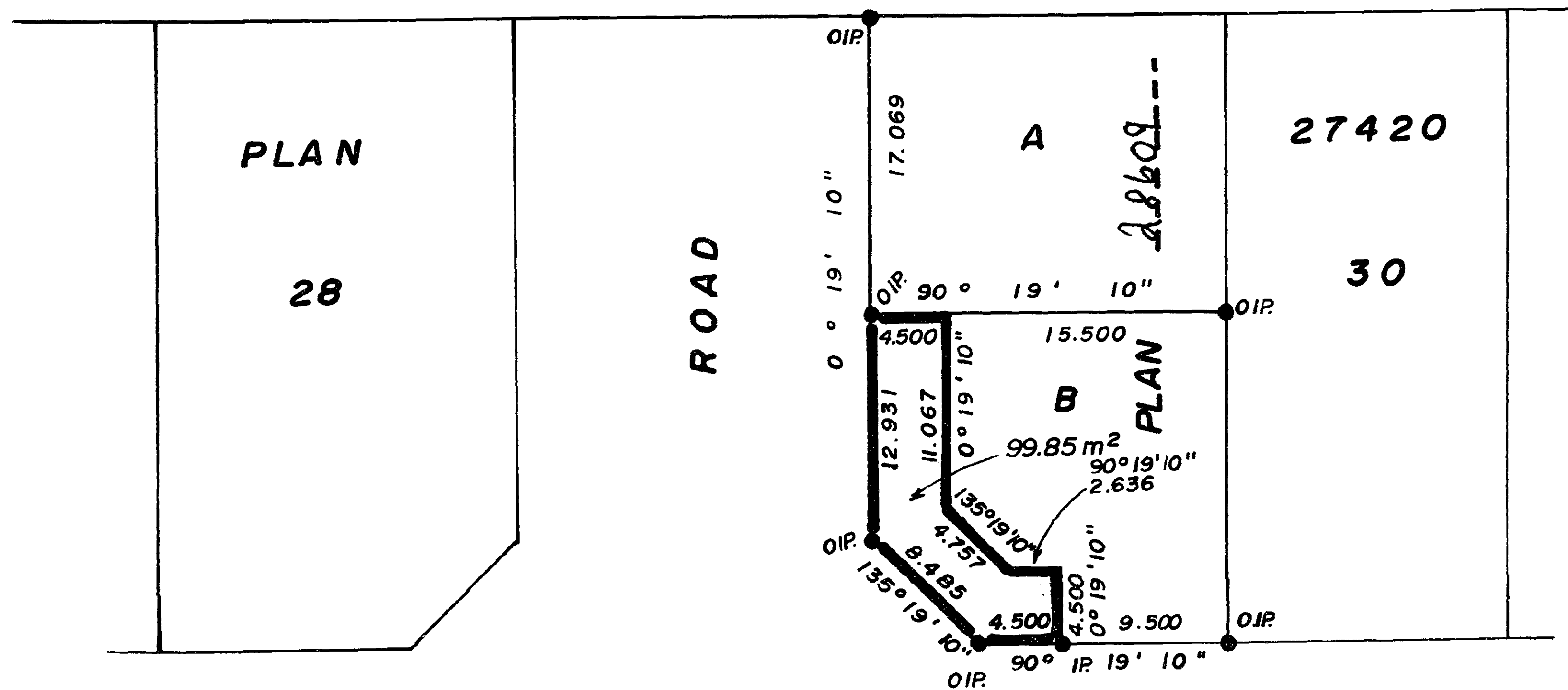


PLAN NO. 28610

Deposited in the Land Title Office at Prince George
 this 7th day of Sept 1982.

E. J. Hawes
 Registrar

LOT B, PLAN 27144



PINEWOOD AVENUE



Bearings are astronomic derived from
 Plan 27420.

- IP.....Standard Iron Post.
-Denotes "old"

I, V. Bartell, a British Columbia Land Surveyor of
 Prince George in British Columbia certify that I was present at
 and personally superintended the survey represented by this plan
 and that the survey and plan are correct. The said survey
 was completed on the 7th day of June 1982.

V. Bartell
 V. Bartell, B.C.L.S.

BOOK OF REFERENCE	
Description	Area
Lot B, Pl. <u>28609</u>	99.85m ²

This plan lies within the Fraser Fort George
 Regional District.

McWilliam, Whyte, Goble, & Associates,
 B.C. Land Surveyors,
 Prince George - Kamloops - Smithers - Salmon Arm.

REF. NO. 82060 - 2