

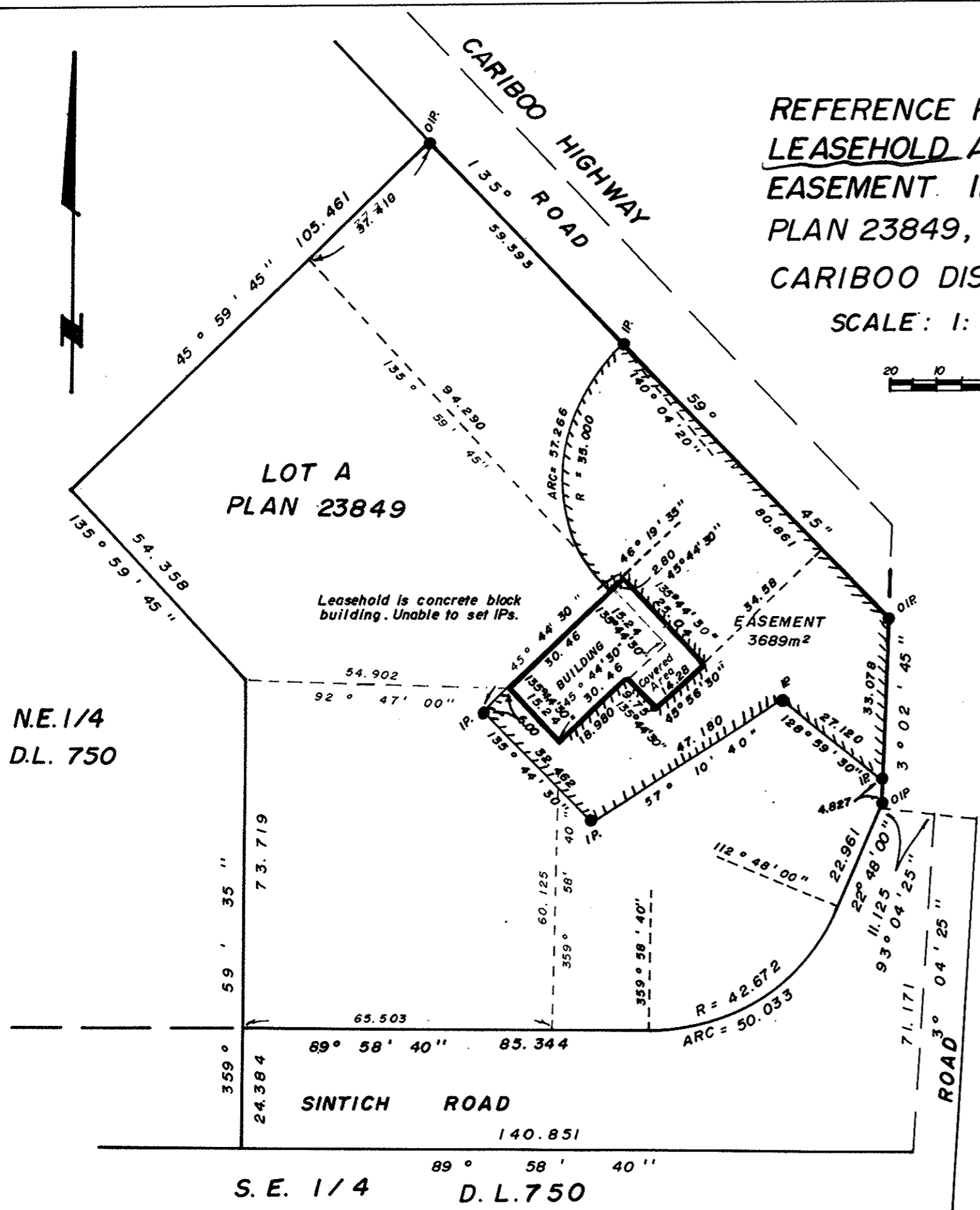
LD

REFERENCE PLAN OF
LEASEHOLD AND ADJOINING
EASEMENT IN LOT A,
PLAN 23849, DISTRICT LOT 750,
CARIBOO DISTRICT.

PLAN NO. 28553
Deposited in the Land Title Office at Prince George
this 18 day of Aug 1982.

E.S. R
Registrar

SCALE: 1: 1000 (ALL DISTANCES ARE IN METRES.)



LEASE AREA = 646m²
 EASEMENT AREA = 3689m²

Bearings are astronomic derived
from Plan 23849.

- IP.....Standard Iron Post.
-Denotes "old"

I, Dale Keown, a British Columbia Land Surveyor of
Prince George in British Columbia certify that I was
present at and personally superintended the survey
represented by this plan and that the survey and plan
are correct. The said survey was completed on the
7th day of July, 1982.

Dale Keown
Dale Keown, B.C.L.S.

McWilliam, Whyte, Goble, & Associates,
B.C. Land Surveyors,
Prince George-Kamloops-Smithers-Salmon Arm.

REF. NO. 82086.

This plan lies within the Fraser
Fort George Regional District.

N.E. 1/4
D.L. 750

S. E. 1/4
D. L. 750