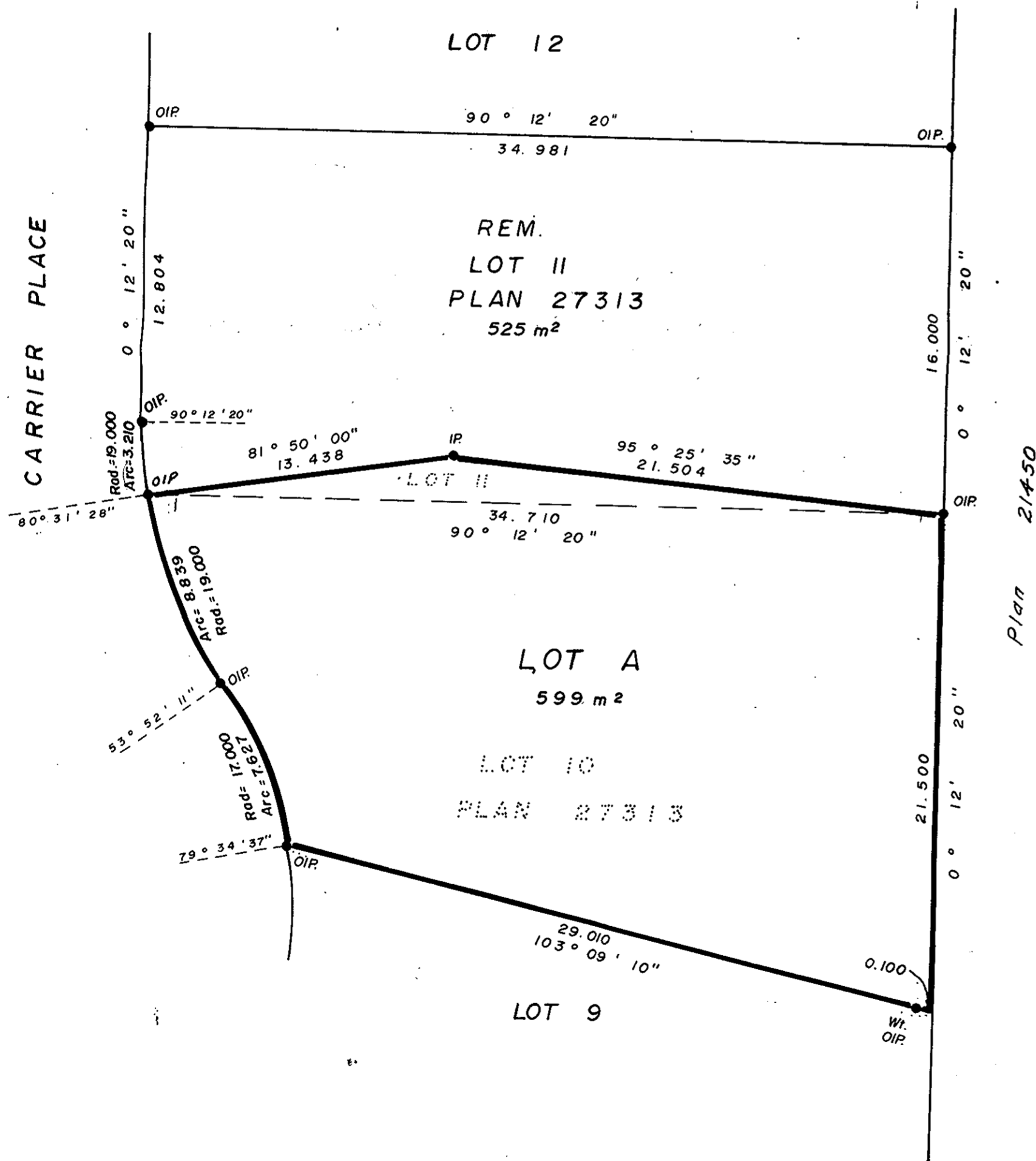


PLAN OF SUBDIVISION OF  
 LOT 10, and PART OF LOT II, PLAN 27313,  
 DISTRICT LOT 2507, CARIBOO DISTRICT.

Scale: 1: 200 (1cm = 2m)



ALL DISTANCES ARE IN METRES.



PLOTTED

EM

PLAN 28539

Deposited in the Land Title Office  
 at Prince George, B.C.  
 on the 12th day of Aug. 1982.

*[Signature]*  
 Registrar

Bearings are astronomic and are derived from  
 Plan 27313

- P.con. Standard Concrete Post.
- P.Rock Standard Rock Post.
- PP Standard Pipe Post.
- I.P. Standard Iron Post.
- P. Wooden Post.
- L.P. Lead Plug.
- Denoting "Old"
- WT. Denoting "Witness"
- CIP Capped Iron Post.
- T.H. Traverse Hub.

I, V. Bartell, a British Columbia  
 land surveyor, of Prince George,  
 in British Columbia, certify that I was present  
 at and personally superintended the survey  
 represented by this plan, and that the survey  
 and plan are correct. The survey was completed  
 on the 3rd day of May 1982.

*[Signature]*  
 V. Bartell, B.C.L.S.

Approved under the Land Title Act on  
 the 7th day of MAY 1982.

*[Signature]*  
 Approving Officer  
 City of Prince George

Witness: *[Signature]*  
 Basakha Singh Bains

Witness: *[Signature]*  
 Address: 1575-5th Ave  
 Prince George, Postal Code V2L 3L9  
 Occupation: Land Surveyor

This Plan lies within the Fraser-Fort George  
 Regional District

Reapproved July 16/82  
*[Signature]*

McWilliam-Whyte-Goble & Associates  
 B.C. Land Surveyors  
 Kamloops-Prince George-Salmon Arm-Smithers  
 FB/P.D.L. 2507 File No. 82041