



GH
PLOTTED

PLAN NO. 28479
Deposited in the Land Title Office at Prince George
this 30th day of JUNE 1982.

E. J. RAVEN
Registrar

PLAN TO ACCOMPANY ROAD
EXCHANGE BY-LAW No. 3978
CITY OF PRINCE GEORGE,
CLOSING LANE BETWEEN LOTS 68 to
73, PLAN 10868 and DEDICATING AS
LANE PART OF LOT 68, PLAN 10868,
DISTRICT LOT 936, CARIBOO DISTRICT.
SCALE: 1:500



(ALL DISTANCES ARE IN METRES)

LEGEND
BEARINGS ARE ASTRONOMIC DERIVED FROM N. BOY.
LOTS 61 and 76 = 90° 17' 30"
● P. Con STANDARD POST IN CONCRETE
● IP STANDARD IRON POST.
O DENOTES OLD.

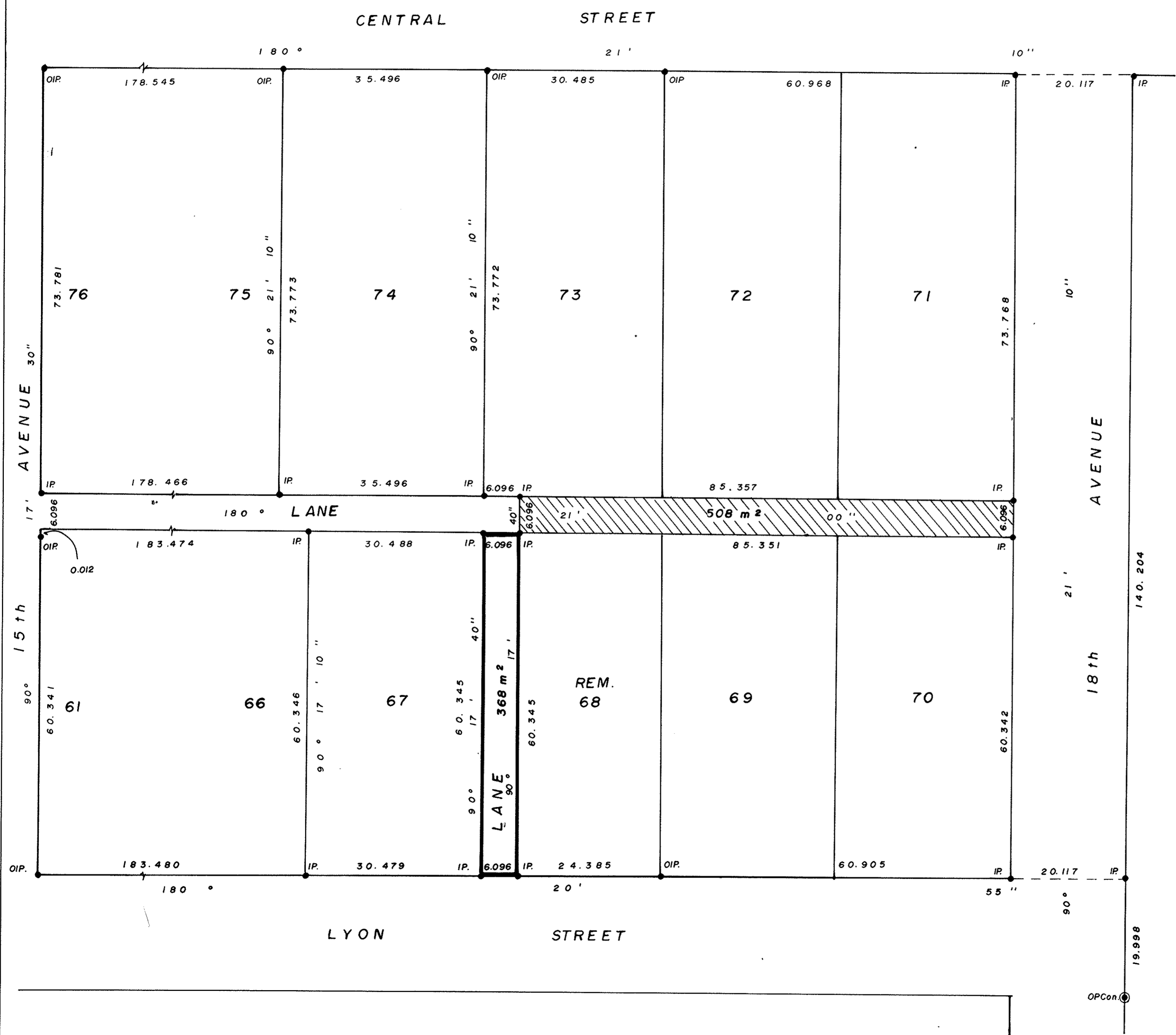
I, G. KILBRIDE, A BRITISH COLUMBIA LAND SURVEYOR OF
PRINCE GEORGE IN BRITISH COLUMBIA CERTIFY THAT I WAS
PRESENT AT AND PERSONALLY SUPERINTENDED THE SURVEY
REPRESENTED BY THIS PLAN AND THAT THE SURVEY AND
PLAN ARE CORRECT. THE SAID SURVEY WAS COMPLETED ON
THE 10th DAY OF MAY, 1982.

Gordon Kilbride
GORDON KILBRIDE, B.C.L.S.

BOOK OF REFERENCE	
LANE CLOSURE	508 m ²
LANE DEDICATION	368 m ²

THIS PLAN LIES WITHIN THE FRASER FORT
GEORGE REGIONAL DISTRICT.

McWILLIAM, WHYTE, GOBLE, & ASSOCIATES,
B.C. LAND SURVEYORS,
PRINCE GEORGE-KAMLOOPS-SMITHERS-SALMON ARM.
REF. NO. 82020-1 (D. L. 936)



PLANNED FOR THE CITY OF PRINCE GEORGE

City of Prince George